

**PRR5L Antibody**  
**Catalog # ASC11317****Specification**

---

**PRR5L Antibody - Product Information**

Application	WB, ICC, IF
Primary Accession	<a href="#">O6MZO0</a>
Other Accession	<a href="#">NP_001153639</a> , <a href="#">237757351</a>
Reactivity	Human, Mouse
Host	Rabbit
Clonality	Polyclonal
Isotype	IgG
Application Notes	PRR5L antibody can be used for detection of PRR5L by Western blot at 1 µg/mL. Antibody can also be used for immunocytochemistry starting at 10 µg/mL. For immunofluorescence start at 20 µg/mL.

**PRR5L Antibody - Additional Information**Gene ID **79899****Target/Specificity**

PRR5L; At least three isoforms of PRR5L are known to exist; this antibody will recognize only isoforms a and b. PRR5L antibody will not cross-react with PPR5.

**Reconstitution & Storage**

PRR5L antibody can be stored at 4°C for three months and -20°C, stable for up to one year. As with all antibodies care should be taken to avoid repeated freeze thaw cycles. Antibodies should not be exposed to prolonged high temperatures.

**Precautions**

PRR5L Antibody is for research use only and not for use in diagnostic or therapeutic procedures.

**PRR5L Antibody - Protein Information****Name** PRR5L**Synonyms** PROTOR2**Function**

Associates with the mTORC2 complex that regulates cellular processes including survival and organization of the cytoskeleton (PubMed:<<http://www.uniprot.org/citations/17461779>>17461779</a>). Regulates the activity of the mTORC2 complex in a substrate-specific manner preventing for instance the specific phosphorylation of PKCs and thereby controlling cell migration (PubMed:<<http://www.uniprot.org/citations/22609986>>22609986</a>). Plays a role in the stimulation of ZFP36-mediated mRNA decay of several ZFP36-associated mRNAs, such as TNF-alpha and GM-CSF, in response to stress

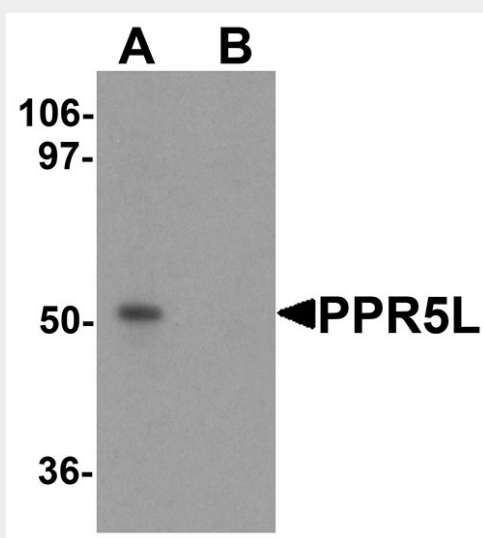
(PubMed:<a href="http://www.uniprot.org/citations/21964062" target="\_blank">21964062</a>). Required for ZFP36 localization to cytoplasmic stress granule (SG) and P-body (PB) in response to stress (PubMed:<a href="http://www.uniprot.org/citations/21964062" target="\_blank">21964062</a>).

### PPR5L Antibody - Protocols

Provided below are standard protocols that you may find useful for product applications.

- [Western Blot](#)
- [Blocking Peptides](#)
- [Dot Blot](#)
- [Immunohistochemistry](#)
- [Immunofluorescence](#)
- [Immunoprecipitation](#)
- [Flow Cytometry](#)
- [Cell Culture](#)

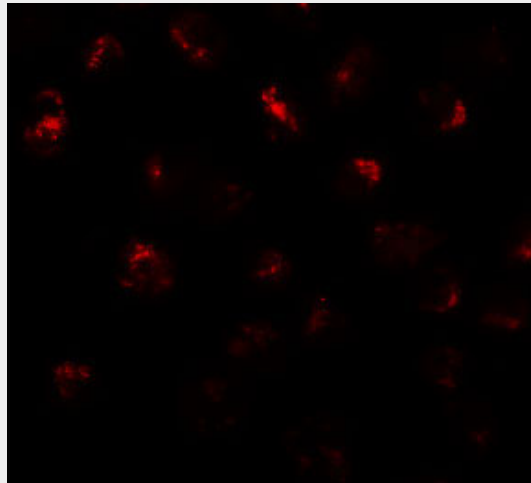
### PPR5L Antibody - Images



Western blot analysis of PPR5L in 3T3 cell lysate with PPR5L antibody at 1 µg/mL in (A) the absence and (B) the presence of blocking peptide



Immunocytochemistry of PPR5L in 293 cells with PPR5L antibody at 10 µg/mL.



Immunofluorescence of PPR5L in 3T3 cells with PPR5L antibody at 20 µg/mL.

### **PPR5L Antibody - Background**

PPR5L Antibody: Proline-rich protein 5-like (PPR5L), also known as Protor-2, is structurally similar to PRR5 and also binds to the mTOR complex 2 (mTORC2). PRR5L is not required for mTORC2 integrity or kinase activity, but dissociates from mTORC2 upon knockdown of tuberous sclerosis complex 1 (TSC1) and TSC2. Knockdown of PRR5L reduced apoptosis in mTORC2 deficient cells as well as cells where mTOR was active, suggesting that mTORC2-dissociated PRR5L may promote apoptosis, and thus play a role in the balance between cell growth and cell death.

### **PPR5L Antibody - References**

Thedieck K, Polak P, Kim ML, et al. 2007. PRAS40 and PRR5-like protein are new mTOR interactors that regulate apoptosis. PLoS One 2007; 2:e1217.  
Pearce LR, Huang X, Boudeau J, et al. Identification of Protor as a novel Rictor-binding component of mTOR complex-2. Biochem. J. 2007; 405:513-22.