

**TMEM88 Antibody**  
**Catalog # ASC11345****Specification**

---

**TMEM88 Antibody - Product Information**

Application	WB, IHC, IF
Primary Accession	<a href="#">Q6PEY1</a>
Other Accession	<a href="#">EAW90125</a> , <a href="#">44662813</a>
Reactivity	Human, Mouse, Rat
Host	Rabbit
Clonality	Polyclonal
Isotype	IgG
Application Notes	TMEM88 antibody can be used for detection of TMEM88 by Western blot at 1 µg/mL. Antibody can also be used for immunohistochemistry starting at 2.5 µg/mL. For immunofluorescence start at 20 µg/mL.

**TMEM88 Antibody - Additional Information**

Gene ID **92162**

**Target/Specificity**

TMEM88; At least two isoforms of TMEM88 are known to exist; this antibody will recognize both isoforms.

**Reconstitution & Storage**

TMEM88 antibody can be stored at 4°C for three months and -20°C, stable for up to one year. As with all antibodies care should be taken to avoid repeated freeze thaw cycles. Antibodies should not be exposed to prolonged high temperatures.

**Precautions**

TMEM88 Antibody is for research use only and not for use in diagnostic or therapeutic procedures.

**TMEM88 Antibody - Protein Information**

**Name** TMEM88

**Synonyms** TMEM88A

**Function**

Inhibits the Wnt/beta-catenin signaling pathway. Crucial for heart development and acts downstream of GATA factors in the pre- cardiac mesoderm to specify lineage commitment of cardiomyocyte development.

**Cellular Location**

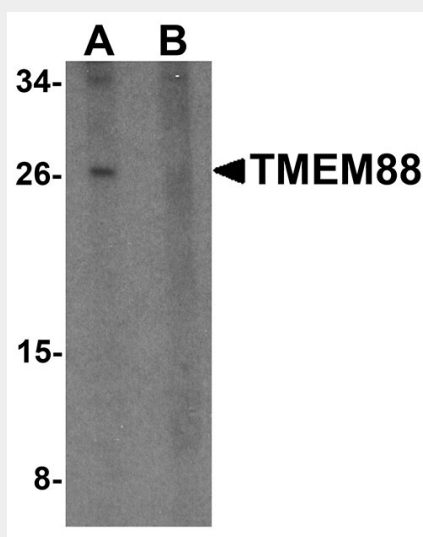
Cell membrane; Multi-pass membrane protein

## TMEM88 Antibody - Protocols

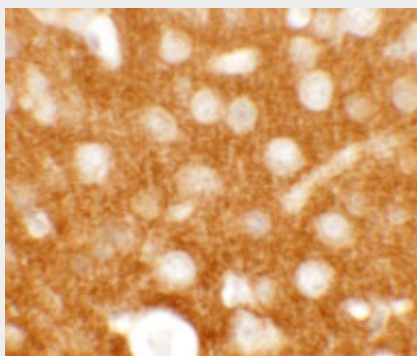
Provided below are standard protocols that you may find useful for product applications.

- [Western Blot](#)
- [Blocking Peptides](#)
- [Dot Blot](#)
- [Immunohistochemistry](#)
- [Immunofluorescence](#)
- [Immunoprecipitation](#)
- [Flow Cytometry](#)
- [Cell Culture](#)

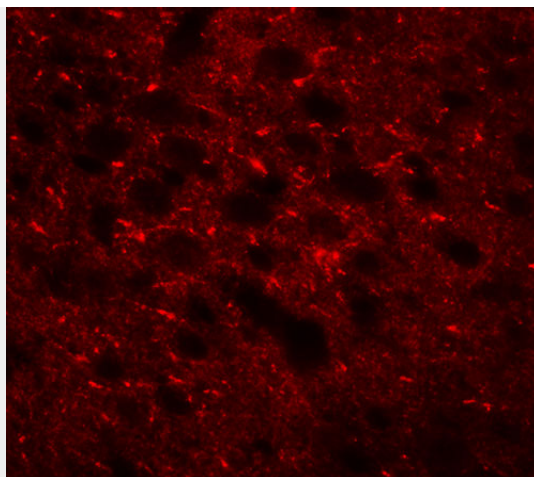
## TMEM88 Antibody - Images



Western blot analysis of TMEM88 in human brain tissue lysate with TMEM88 antibody at 1  $\mu$ g/mL in (A) the absence and (B) the presence of blocking peptide.



Immunohistochemistry of TMEM88 in mouse brain tissue with TMEM88 antibody at 2.5  $\mu$ g/mL.



Immunofluorescence of TMEM88 in mouse brain tissue with TMEM88 antibody at 20 µg/mL.

#### **TMEM88 Antibody - Background**

TMEM88 Antibody: Transmembrane protein 88 (TMEM88) is a two-transmembrane-type protein whose C-terminal tail has been shown to bind the PDZ domain of Dishevelled (Dvl), one of the key components in Wnt signaling pathways. TMEM88 attenuated the Wnt/beta-catenin signaling induced by Wnt-1 ligand in a dose-dependent manner and knockdown of TMEM88 by RNAi increased Wnt activity, suggesting that TMEM88 plays a role in regulating Wnt signaling in a context-dependent manner.

#### **TMEM88 Antibody - References**

Lee HJ, Finklestein D, Li X, et al. Identification of transmembrane protein 88 (TMEM88) as a dishevelled-binding protein. J. Biol. Chem. 2010; 285:41549-56.