

EI24 Antibody
Catalog # ASC11374**Specification**

EI24 Antibody - Product Information

Application	WB, IHC
Primary Accession	O14681
Other Accession	NP_004870 , 55956766
Reactivity	Human, Mouse, Rat
Host	Rabbit
Clonality	Polyclonal
Isotype	IgG
Application Notes	EI24 antibody can be used for detection of EI24 by Western blot at 1 - 2 µg/mL. Antibody can also be used for immunohistochemistry starting at 5 µg/mL.

EI24 Antibody - Additional InformationGene ID **9538****Target/Specificity**

EI24; At least two isoforms of EI24 are known to exist; this antibody will only detect the larger isoform.

Reconstitution & Storage

EI24 antibody can be stored at 4°C for three months and -20°C, stable for up to one year. As with all antibodies care should be taken to avoid repeated freeze thaw cycles. Antibodies should not be exposed to prolonged high temperatures.

Precautions

EI24 Antibody is for research use only and not for use in diagnostic or therapeutic procedures.

EI24 Antibody - Protein Information**Name** EI24**Synonyms** PIG8**Function**

Acts as a negative growth regulator via p53-mediated apoptosis pathway. Regulates formation of degradative autolysosomes during autophagy (By similarity).

Cellular Location

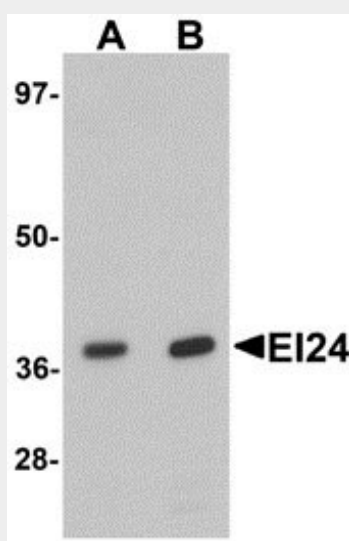
Nucleus membrane; Multi-pass membrane protein. Cytoplasm. Endoplasmic reticulum membrane; Multi-pass membrane protein

El24 Antibody - Protocols

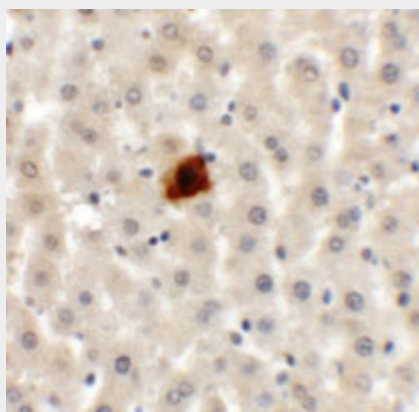
Provided below are standard protocols that you may find useful for product applications.

- [Western Blot](#)
- [Blocking Peptides](#)
- [Dot Blot](#)
- [Immunohistochemistry](#)
- [Immunofluorescence](#)
- [Immunoprecipitation](#)
- [Flow Cytometry](#)
- [Cell Culture](#)

El24 Antibody - Images



Western blot analysis of El24 in rat liver tissue lysate with El24 antibody at (A) 1 and (B) 2 μ g/mL.



Immunohistochemistry of El24 in rat liver tissue with El24 antibody at 5 μ g/mL.

El24 Antibody - Background

El24 Antibody: The etoposide-induced 24 (El24) protein is an immediate-early induction target of p53-mediated apoptosis and functions as a tumor suppressor. El24 contains six transmembrane domains and is localized to the endoplasmic reticulum (ER). It binds to Bcl-2 and may contribute to apoptosis by modulating the activity and function of Bcl-2. El24 is highly mutated in aggressive breast cancers and its loss in breast cancer tissue correlates with tumor invasiveness. Similar

findings in invasive cervical carcinoma suggest that EI24 may be a promising therapeutic target in the treatment of invasive cancer.

EI24 Antibody - References

Lehar SM, Nacht M, Jacks T, et al. Identification and cloning of EI24, a gene induced by p53 in etoposide-treated cells. *Oncogene* 1996; 12:1181-7.

Gu Z, Flemington C, Chittenden T, et al. ei24, a p53 response gene involved in growth suppression and apoptosis. *Mol. Cell Biol.* 2000; 20:233-41

Zhao X, Ayer RE, Davis SL, et al. Apoptosis factor EI24/PIG8 is a novel endoplasmic reticulum-localized Bcl-2-binding protein which is associated with suppression of breast cancer invasiveness. *Cancer Res.* 2005; 65:2125-9.

Mazumder D, Mitra S, Singh RK, et al. Inactivation of CHEK1 and EI24 are associated with the development of invasive cervical carcinoma: clinical and prognostic implications. *Int. J. Cancer* 2010; epub