

SDHAF2 Antibody
Catalog # ASC11381**Specification**

SDHAF2 Antibody - Product Information

Application	WB
Primary Accession	Q9NX18
Other Accession	NP_060311 , 8923450
Reactivity	Human, Mouse, Rat
Host	Chicken
Clonality	Polyclonal
Isotype	IgY
Application Notes	SDHAF2 antibody can be used for detection of SDHAF2 by Western blot at 1 µg/mL.

SDHAF2 Antibody - Additional InformationGene ID **54949****Target/Specificity**

SDHAF2; SDHAF2 antibody is predicted to not cross-react with other SDHAF protein family members.

Reconstitution & Storage

SDHAF2 antibody can be stored at 4°C for three months and -20°C, stable for up to one year. As with all antibodies care should be taken to avoid repeated freeze thaw cycles. Antibodies should not be exposed to prolonged high temperatures.

Precautions

SDHAF2 Antibody is for research use only and not for use in diagnostic or therapeutic procedures.

SDHAF2 Antibody - Protein Information**Name** SDHAF2 {ECO:0000255|HAMAP-Rule:MF_03057}**Function**

Plays an essential role in the assembly of succinate dehydrogenase (SDH), an enzyme complex (also referred to as respiratory complex II) that is a component of both the tricarboxylic acid (TCA) cycle and the mitochondrial electron transport chain, and which couples the oxidation of succinate to fumarate with the reduction of ubiquinone (coenzyme Q) to ubiquinol. Required for flavinylation (covalent attachment of FAD) of the flavoprotein subunit SDHA of the SDH catalytic dimer.

Cellular Location

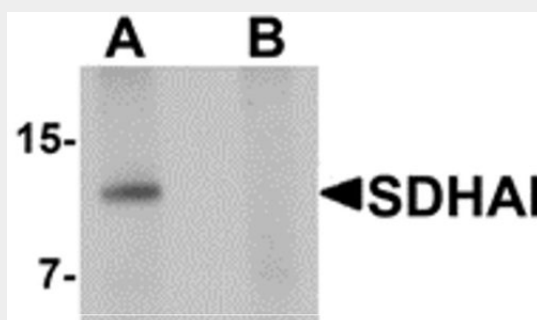
Mitochondrion matrix {ECO:0000255|HAMAP- Rule:MF_03057, ECO:0000269|PubMed:19628817}

SDHAF2 Antibody - Protocols

Provided below are standard protocols that you may find useful for product applications.

- [Western Blot](#)
- [Blocking Peptides](#)
- [Dot Blot](#)
- [Immunohistochemistry](#)
- [Immunofluorescence](#)
- [Immunoprecipitation](#)
- [Flow Cytometry](#)
- [Cell Culture](#)

SDHAF2 Antibody - Images



Western blot analysis of SDHAF2 in rat liver tissue lysate with SDHAF2 antibody at 1 µg/mL in (A) the absence and (B) the presence of blocking peptide.

SDHAF2 Antibody - Background

SDHAF2 Antibody: SDHAF2 (Succinate dehydrogenase complex assembly factor 2) encodes a mitochondrial protein needed for FAD cofactor attach to the SDH enzyme which plays a critical role in mitochondria. SDHAF2 is a tumor suppressor, but recent evidence suggests that somatic mutations of the SDHAF2 are unlikely to contribute to parathyroid tumor development in sporadic primary hyperparathyroidism.

SDHAF2 Antibody - References

Hao HX, Khalimonchuk O, Schraders M, et al. SDH5, a gene required for flavination of succinate dehydrogenase, is mutated in paraganglioma. *Science* 2009; 325:1139-42.
Burnichon N, Brière JJ, Libé R, et al. SDHA is a tumor suppressor gene causing paraganglioma. *Hum. Mol. Genet.* 2010; 19:3011-20.
Kunst HP, Rutten MH, de Monnik JP, et al. SDHAF2 (PGL2-SDH5) and hereditary head and neck paraganglioma. *Clin. Cancer Res.* 2011; 17:247-54
Starker LF, Delgado-Verdugo A, Udelsman R, et al. Expression and somatic mutations of SDHAF2 (SDH5), a novel endocrine tumor suppressor gene in parathyroid tumors of primary hyperparathyroidism. *Endocrine* 2010; 38:397-401.