

**DRGX Antibody**  
**Catalog # ASC11383****Specification**

---

**DRGX Antibody - Product Information**

Application	WB, IF
Primary Accession	<a href="#">A6NNA5</a>
Other Accession	<a href="#">NP_001073989</a> , <a href="#">122937484</a>
Reactivity	Human, Mouse, Rat
Host	Chicken
Clonality	Polyclonal
Isotype	IgY
Application Notes	DRGX antibody can be used for detection of DRGX by Western blot at 1 - 2 µg/mL. Antibody can also be used for immunofluorescence starting at 20 µg/mL. For immunofluorescence start at 20 µg/mL.

**DRGX Antibody - Additional Information**Gene ID **644168****Target/Specificity**

DRGX; At least two are known to exist; DRGX antibody is predicted to not cross-react with other Homeodomain proteins.

**Reconstitution & Storage**

DRGX antibody can be stored at 4°C for three months and -20°C, stable for up to one year. As with all antibodies care should be taken to avoid repeated freeze thaw cycles. Antibodies should not be exposed to prolonged high temperatures.

**Precautions**

DRGX Antibody is for research use only and not for use in diagnostic or therapeutic procedures.

**DRGX Antibody - Protein Information****Name** DRGX**Synonyms** PRRXL1**Function**

Transcription factor required for the formation of correct projections from nociceptive sensory neurons to the dorsal horn of the spinal cord and normal perception of pain.

**Cellular Location**

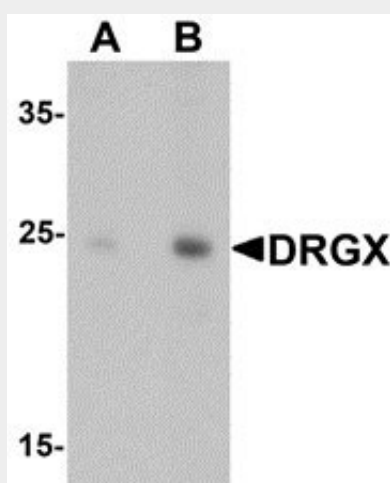
Nucleus {ECO:0000255|PROSITE-ProRule:PRU00108, ECO:0000255|PROSITE-ProRule:PRU00138}

## DRGX Antibody - Protocols

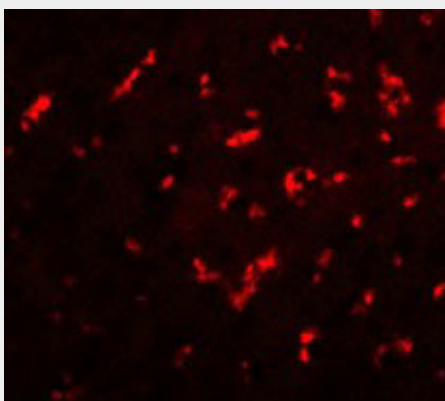
Provided below are standard protocols that you may find useful for product applications.

- [Western Blot](#)
- [Blocking Peptides](#)
- [Dot Blot](#)
- [Immunohistochemistry](#)
- [Immunofluorescence](#)
- [Immunoprecipitation](#)
- [Flow Cytometry](#)
- [Cell Culture](#)

## DRGX Antibody - Images



Western blot analysis of DRGX in rat liver tissue lysate with DRGX antibody at (A) 1 and (B) 2  $\mu\text{g/mL}$ .



Immunofluorescence of DRGX in rat liver cells with DRGX antibody at 20  $\mu\text{g/mL}$ .

## DRGX Antibody - Background

DRGX Antibody: DRGX, also known as DRG11 or PRRXL1, is a paired homeodomain transcription factor, and was initially cloned from a differential hybridization screen aimed at identifying dorsal root ganglia (DRG)-specific genes. DRGX is a key regulator of the differentiation of the spinal cord neuronal circuit dedicated to the processing of nociceptive information. DRGX is also important for the formation of the whisker-related somatosensory maps in the principal sensory nucleus of the trigeminal nerve, thalamus and somatosensory cortex.

**DRGX Antibody - References**

Saito T, Greenwood A, Sun Q et al. Identification by differential RT-PCR of a novel paired homeodomain protein specifically expressed in sensory neurons and a subset of their CNS targets. *Mol. Cell. Neurosci.* 1995; 6:280-92.

Chen ZF, Rebelo S, White F et al. The paired homeodomain protein DRG11 is required for the projection of cutaneous sensory afferent fibers to the dorsal spinal cord. *Neuron* 2001; 31:59-73.

Ding YQ, Yin J, Xu HM, et al. Formation of whisker-related principal sensory nucleus-based lemniscal pathway requires a paired homeodomain transcription factor, *Drg11*. *J. Neurosci.* 2003; 23:7246-54

Rebelo S, Lopes C, Lima D, et al. Expression of a *Prrxl1* alternative splice variant during the development of the mouse nociceptive system. *Int. J. Dev. Biol.* 2009; 53:1089-95.