

SPATA6 Antibody
Catalog # ASC11396**Specification**

SPATA6 Antibody - Product Information

Application	WB, IHC, IF
Primary Accession	Q9NWH7
Other Accession	NP_061946 , 9506603
Reactivity	Human, Mouse, Rat
Host	Rabbit
Clonality	Polyclonal
Isotype	IgG
Application Notes	SPATA6 antibody can be used for detection of SPATA6 by Western blot at 1 µg/mL. Antibody can also be used for immunohistochemistry starting at 2.5 µg/mL. For immunofluorescence start at 20 µg/mL.

SPATA6 Antibody - Additional InformationGene ID **54558****Target/Specificity**

SPATA6; At least three isoforms of SPATA6 are known to exist; this antibody will detect only the longest two isoforms. SPATA6 antibody is predicted to not cross-react with other SPATA protein family members.

Reconstitution & Storage

SPATA6 antibody can be stored at 4°C for three months and -20°C, stable for up to one year. As with all antibodies care should be taken to avoid repeated freeze thaw cycles. Antibodies should not be exposed to prolonged high temperatures.

Precautions

SPATA6 Antibody is for research use only and not for use in diagnostic or therapeutic procedures.

SPATA6 Antibody - Protein Information**Name** SPATA6**Function**

Required for formation of the sperm connecting piece during spermiogenesis. Sperm connecting piece is essential for linking the developing flagellum to the head during late spermiogenesis. May be involved in myosin-based microfilament transport through interaction with myosin subunits.

Cellular Location

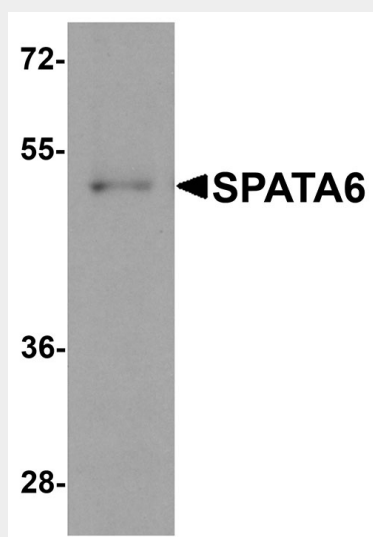
Secreted {ECO:0000250|UniProtKB:Q3U6K5}. Cell projection, cilium, flagellum {ECO:0000250|UniProtKB:Q3U6K5} Note=Specifically localizes to the segmented columns and the capitulum of the sperm connecting piece. {ECO:0000250|UniProtKB:Q3U6K5}

SPATA6 Antibody - Protocols

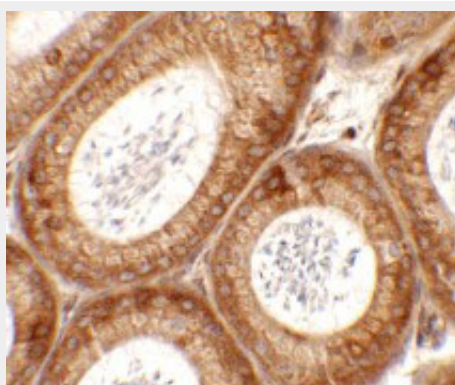
Provided below are standard protocols that you may find useful for product applications.

- [Western Blot](#)
- [Blocking Peptides](#)
- [Dot Blot](#)
- [Immunohistochemistry](#)
- [Immunofluorescence](#)
- [Immunoprecipitation](#)
- [Flow Cytometry](#)
- [Cell Culture](#)

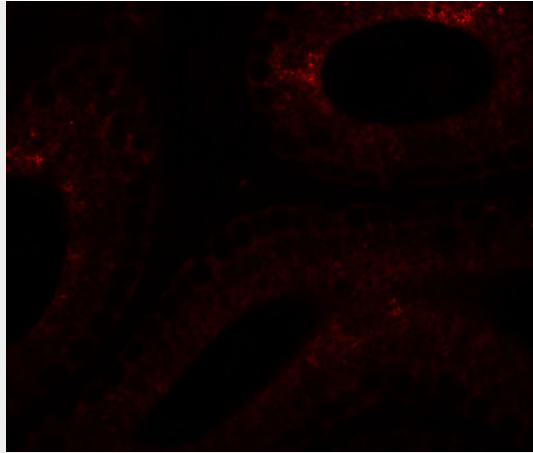
SPATA6 Antibody - Images



Western blot analysis of SPATA6 in A20 cell lysate with SPATA6 antibody at 1 μ g/mL.



Immunohistochemistry of SPATA6 in mouse testis tissue with SPATA6 antibody at 2.5 μ g/mL.



Immunofluorescence of SPATA6 in mouse testis tissue with SPATA6 antibody at 20 µg/mL.

SPATA6 Antibody - Background

SPATA6 Antibody: The development of spermatogonial stem cells into spermatozoa, i.e., spermatogenesis, is a highly ordered process that requires multiple proteins, including some that are testis-specific or testis-specific isoforms of genes that are expressed in other tissues. One such protein is SPATA6: while its full-length isoform is expressed in multiple tissues including thymus, brain and testis, the shorter isoform is expressed only in testis. It has some homology to the motor domain of kinesin related proteins and with the *C. elegans* neural calcium sensor protein NCS-2.

SPATA6 Antibody - References

Venables JP. Alternative splicing in the testes. *Curr. Opin. Genet. Dev.* 2002; 12:615-9.
Oh C, Aho H, Shamsadin R, et al. Characterization, expression pattern and chromosomal localization of the spermatogenesis associated 6 gene (*Spata6*). *Mol. Human Reprod.* 2003; 9:321-30.