

ANKLE2 Antibody
Catalog # ASC11409**Specification****ANKLE2 Antibody - Product Information**

Application	WB
Primary Accession	Q86XL3
Other Accession	AAH43157 , 148664230
Reactivity	Human, Mouse, Rat
Host	Chicken
Clonality	Polyclonal
Isotype	IgY
Application Notes	ANKLE2 antibody can be used for detection of ANKLE2 by Western blot at 1 - 2 µg/mL.

ANKLE2 Antibody - Additional InformationGene ID **23141****Target/Specificity**

ANKLE2; Three isoforms of ANKLE2 are known to exist; this antibody will detect all three. ANKLE2 antibody is predicted to not cross-react with ANKLE1.

Reconstitution & Storage

ANKLE2 antibody can be stored at 4°C for three months and -20°C, stable for up to one year. As with all antibodies care should be taken to avoid repeated freeze thaw cycles. Antibodies should not be exposed to prolonged high temperatures.

Precautions

ANKLE2 Antibody is for research use only and not for use in diagnostic or therapeutic procedures.

ANKLE2 Antibody - Protein Information**Name** ANKLE2**Synonyms** KIAA0692, LEM4**Function**

Involved in mitotic nuclear envelope reassembly by promoting dephosphorylation of BAF/BANF1 during mitotic exit (PubMed: [22770216](http://www.uniprot.org/citations/22770216)). Coordinates the control of BAF/BANF1 dephosphorylation by inhibiting VRK1 kinase and promoting dephosphorylation of BAF/BANF1 by protein phosphatase 2A (PP2A), thereby facilitating nuclear envelope assembly (PubMed: [22770216](http://www.uniprot.org/citations/22770216)). May regulate nuclear localization of VRK1 in non-dividing cells (PubMed: [31735666](http://www.uniprot.org/citations/31735666)). It is unclear whether it acts as a real PP2A regulatory subunit or whether it is involved in recruitment of the PP2A complex (PubMed: [22770216](http://www.uniprot.org/citations/22770216)). Involved in brain development (PubMed: [22770216](http://www.uniprot.org/citations/22770216)).

href="http://www.uniprot.org/citations/25259927" target="_blank">25259927).

Cellular Location

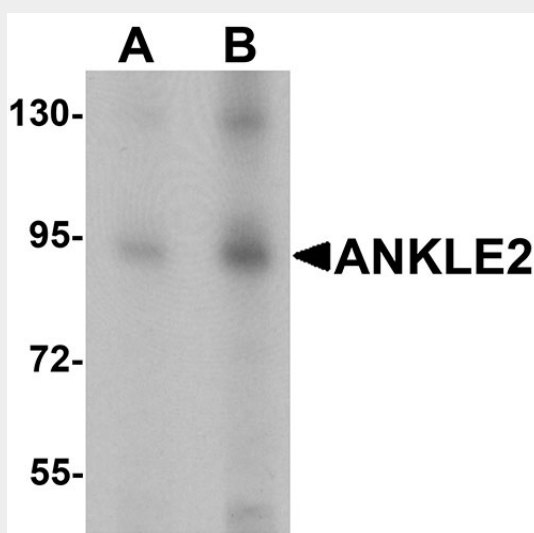
Endoplasmic reticulum membrane; Single-pass type III membrane protein

ANKLE2 Antibody - Protocols

Provided below are standard protocols that you may find useful for product applications.

- [Western Blot](#)
- [Blocking Peptides](#)
- [Dot Blot](#)
- [Immunohistochemistry](#)
- [Immunofluorescence](#)
- [Immunoprecipitation](#)
- [Flow Cytometry](#)
- [Cell Culture](#)

ANKLE2 Antibody - Images



Western blot analysis of ANKLE2 in SW480 cell lysate with ANKLE2 antibody at (A) 1 and (B) 2 µg/mL.

ANKLE2 Antibody - Background

ANKLE2 Antibody: Ankyrins are membrane adaptor molecules that play important roles in coupling integral membrane proteins to the spectrin-based cytoskeleton network. ANKLE2 (Ankyrin repeat and LEM domain containing 2) is a member of ankyrin repeat and LEM domain containing family. It is a potential single-pass membrane protein that contains three ankyrin repeats and a Lem domain. Ankyrin repeats mediate protein-protein interactions and are among the most common structural motifs in known proteins. The function of this protein is still under investigation.

ANKLE2 Antibody - References

Lee KK and Wilson KL. All in the family: evidence for four new LEM-domain proteins Lem2 (NET-25), Lem3, Lem4 and Lem5 in the human genome. Symp. Soc. Exp. Biol. 2004; 56:329-39

