

MYBPC1 Antibody
Catalog # ASC11435**Specification**

MYBPC1 Antibody - Product Information

Application	WB, IF
Primary Accession	Q00872
Other Accession	NP_002456 , 45976288
Reactivity	Human, Mouse, Rat
Host	Rabbit
Clonality	Polyclonal
Isotype	IgG
Application Notes	MYBPC1 antibody can be used for detection of MYBPC1 by Western blot at 1 µg/mL. Antibody can also be used for immunofluorescence starting at 20 µg/mL. For immunofluorescence start at 20 µg/mL.

MYBPC1 Antibody - Additional InformationGene ID **4604****Target/Specificity**

MYBPC1; At least five isoforms of MYBPC1 are known to exist. MYBPC1 antibody is predicted not to cross-react with other MYBPC family members

Reconstitution & Storage

MYBPC1 antibody can be stored at 4°C for three months and -20°C, stable for up to one year. As with all antibodies care should be taken to avoid repeated freeze thaw cycles. Antibodies should not be exposed to prolonged high temperatures.

Precautions

MYBPC1 Antibody is for research use only and not for use in diagnostic or therapeutic procedures.

MYBPC1 Antibody - Protein Information**Name** MYBPC1**Synonyms** MYBPCS**Function**

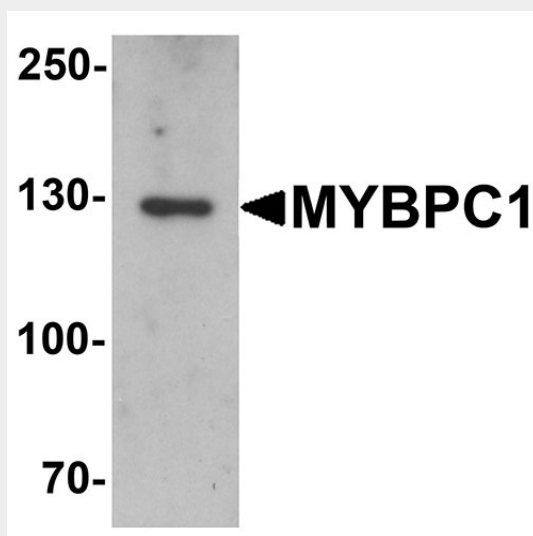
Thick filament-associated protein located in the crossbridge region of vertebrate striated muscle a bands. Slow skeletal protein that binds to both myosin and actin (PubMed:31264822, PubMed:31025394). In vitro, binds to native thin filaments and modifies the activity of actin-activated myosin ATPase. May modulate muscle contraction or may play a more structural role.

MYBPC1 Antibody - Protocols

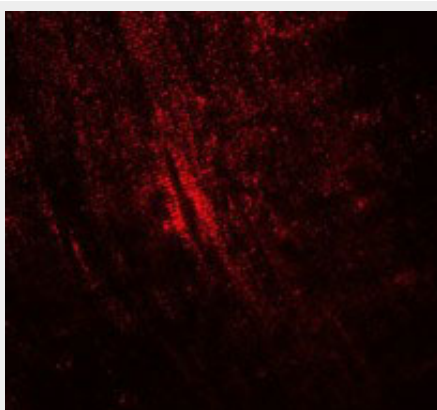
Provided below are standard protocols that you may find useful for product applications.

- [Western Blot](#)
- [Blocking Peptides](#)
- [Dot Blot](#)
- [Immunohistochemistry](#)
- [Immunofluorescence](#)
- [Immunoprecipitation](#)
- [Flow Cytometry](#)
- [Cell Culture](#)

MYBPC1 Antibody - Images



Western blot analysis of MYBPC1 in rat skeletal muscle tissue lysate with MYBPC1 antibody at 1 $\mu\text{g/mL}$.



Immunofluorescence of MYBPC1 in mouse skeletal muscle cells with MYBPC1 antibody at 20 $\mu\text{g/mL}$.

MYBPC1 Antibody - Background

MYBPC1 Antibody: Myosin binding protein C (MYBPC) is a component of the thick filament of striated muscle, with the slow-type isoform designated MYBPC1. Both the fast-type (MYBPC2) and slow-type MYBPC protein contains seven immunoglobulin C2 motifs and three fibronectin type-III

repeats. Multiple isoforms of MYBPC1 are known to exist, and are present in varying amounts in different skeletal muscles. It is thought that the MYBPC1 slow subfamily may play important roles in the assembly and stabilization of sarcomeric M- and A-bands and regulate the contractile properties of the actomyosin filaments.

MYBPC1 Antibody - References

Furst DO, Vinkemeir U and Weber K. Mammalian skeletal muscle C-protein: purification from bovine muscle, binding to titin and the characterization of a full-length human cDNA. J. Cell Sci. 1992; 102:769-78.

Weber FE, Vaughan KT, Reiaich FC, et al. Complete sequence of human fast-type and slow-type muscle myosin-binding-protein C (MyBP-C). Differential expression, conserved domain structure and chromosome assignment. Eur. J. Biochem. 1993; 216:661-9.

Ackermann MA and Kontrogianni-Konstantopoulous A. Myosin binding protein-C slow: an intricate subfamily of proteins. J. Biomed. Biotech. 2010; 2010:652065.