

NKX2-8 Antibody
Catalog # ASC11449**Specification**

NKX2-8 Antibody - Product Information

Application	WB, IHC, IF
Primary Accession	O15522
Other Accession	NP_055175 , 31377777
Reactivity	Human, Mouse, Rat
Host	Rabbit
Clonality	Polyclonal
Isotype	IgG
Application Notes	NKX2-8 antibody can be used for detection of NKX2-8 by Western blot at 1 µg/mL. Antibody can also be used for immunohistochemistry starting at 2.5 µg/mL. For immunofluorescence start at 2.5 µg/mL.

NKX2-8 Antibody - Additional Information

Gene ID	26257
Target/Specificity	
NKX2-8; NKX2-8 antibody is predicted to not cross-react with other NK2 homeobox family members.	

Reconstitution & Storage

NKX2-8 antibody can be stored at 4°C for three months and -20°C, stable for up to one year. As with all antibodies care should be taken to avoid repeated freeze thaw cycles. Antibodies should not be exposed to prolonged high temperatures.

Precautions

NKX2-8 Antibody is for research use only and not for use in diagnostic or therapeutic procedures.

NKX2-8 Antibody - Protein Information

Name NKX2-8

Synonyms NKX-2.8, NKX2G, NKX2H

Cellular Location

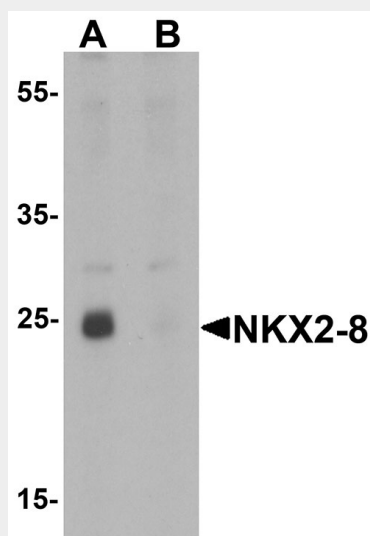
Nucleus.

NKX2-8 Antibody - Protocols

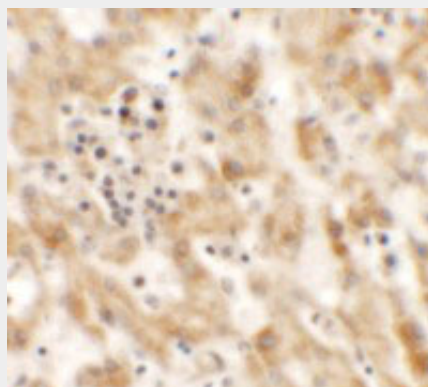
Provided below are standard protocols that you may find useful for product applications.

- [Western Blot](#)
- [Blocking Peptides](#)
- [Dot Blot](#)
- [Immunohistochemistry](#)
- [Immunofluorescence](#)
- [Immunoprecipitation](#)
- [Flow Cytometry](#)
- [Cell Culture](#)

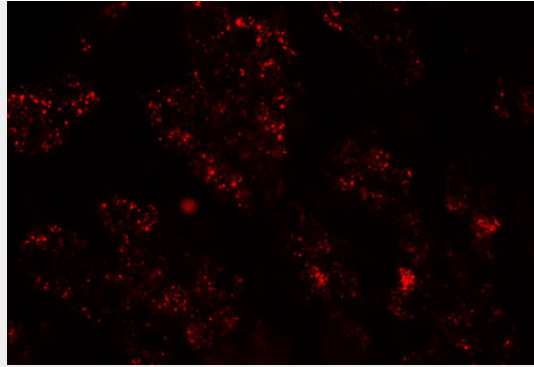
NKX2-8 Antibody - Images



Western blot analysis of NKX2-8 in rat liver tissue lysate with NKX2-8 antibody at 1 $\mu\text{g/mL}$ in (A) the absence and (B) the presence of blocking peptide



Immunohistochemistry of NKX2-8 in human liver tissue with NKX2-8 antibody at 2.5 $\mu\text{g/mL}$.



Immunofluorescence of NKX-8 in human liver tissue with NKX2-8 antibody at 20 µg/mL.

NKX2-8 Antibody - Background

NKX2-8 Antibody: NKX2-8 (NK2 homeobox 8) is a member of a family of transcription factors that are involved in embryonic development and cell fate. It is expressed in the ventral foregut, the developing heart, the epithelial layers of the branchial arches and in the dorsal mesoderm. In conjunction with related protein, NKX2-5, NKX2-8 may play a role in cardiac embryonic development. NKX2-8 is also thought to be involved in lung development and is suspected of being an oncogene in lung cancer that is activated by way of gene amplification at chromosome 14q13.

NKX2-8 Antibody - References

Boettger T, Stein S, and Kessel M. The chicken NKX2.8 homeobox gene: A novel member of the NK-2 gene family. *Dev. Genes Evol.* 1997; 207:65-70.
Kendall J, Liu Q, Bakleh A, et al. Oncogenic cooperation and coamplification of developmental transcription factor genes in lung cancer. *Proc. Natl. Acad. Sci. USA* 2007; 104:16663-8.
Hsu DS, Acharya CR, Balakumaran BS, et al. Characterizing the developmental pathways TTF-1, NKX2-8, and PAX9 in lung cancer. *Proc. Natl. Acad. Sci. USA* 2009; 106:5312-7.