

**YPEL1 Antibody**  
**Catalog # ASC11456****Specification**

---

**YPEL1 Antibody - Product Information**

Application	WB, ICC, IF
Primary Accession	<a href="#">O60688</a>
Other Accession	<a href="#">NP_037445</a> , <a href="#">9558721</a>
Reactivity	Human, Mouse, Rat
Host	Rabbit
Clonality	Polyclonal
Isotype	IgG
Application Notes	YPEL1 antibody can be used for detection of YPEL1 by Western blot at 1 µg/mL. Antibody can also be used for immunocytochemistry starting at 2.5 µg/mL. For immunofluorescence start at 2.5 µg/mL.

**YPEL1 Antibody - Additional Information**

Gene ID	29799
<b>Target/Specificity</b>	
YPEL1;	

**Reconstitution & Storage**

YPEL1 antibody can be stored at 4°C for three months and -20°C, stable for up to one year. As with all antibodies care should be taken to avoid repeated freeze thaw cycles. Antibodies should not be exposed to prolonged high temperatures.

**Precautions**

YPEL1 Antibody is for research use only and not for use in diagnostic or therapeutic procedures.

**YPEL1 Antibody - Protein Information**

**Name** YPEL1

**Function**

May play a role in epithelioid conversion of fibroblasts.

**Cellular Location**

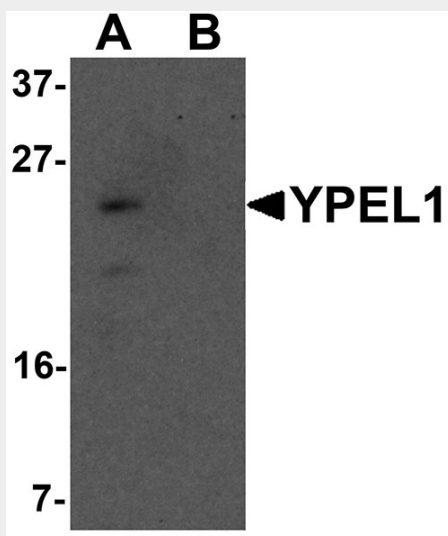
Nucleus.

**YPEL1 Antibody - Protocols**

Provided below are standard protocols that you may find useful for product applications.

- [Western Blot](#)
- [Blocking Peptides](#)
- [Dot Blot](#)
- [Immunohistochemistry](#)
- [Immunofluorescence](#)
- [Immunoprecipitation](#)
- [Flow Cytometry](#)
- [Cell Culture](#)

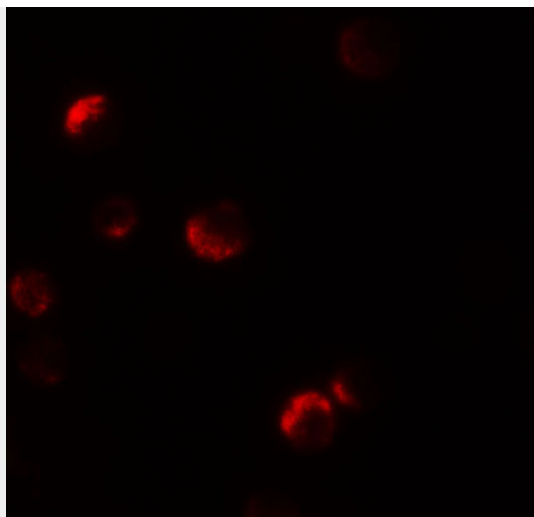
#### YPEL1 Antibody - Images



Western blot analysis of YPEL1 in HeLa cell lysate with YPEL1 antibody at 1  $\mu\text{g/mL}$  in (A) the absence and (B) the presence of blocking peptide.



Immunocytochemistry of YPEL1 in HeLa cells with YPEL1 antibody at 2.5  $\mu\text{g/mL}$ .



Immunofluorescence of YPEL1 in HeLa cells with YPEL1 antibody at 20 µg/mL.

### **YPEL1 Antibody - Background**

YPEL1 Antibody: YPEL1 (yippee-like 1) is thought to play a role in the epitheloid conversion of fibroblasts and the regulation of the cellular morphology. It is a 119 amino acid protein that localizes to the nucleus and belongs to a family of yippee-like proteins that include YPEL2 - 5, all of which localize to the centrosome and nucleus and are widely expressed in both adult and fetal tissue. The family of human YPEL proteins share a high degree of sequence homology with their rodent homologs, suggesting a conserved function between species. YPEL1 might be an important factor during the development and malignant transformation of tissues.

### **YPEL1 Antibody - References**

Farlie P, Reid C, Wilcox S, et al. YPEL1: a novel nuclear protein that induces an epithelial-like morphology in fibroblasts. *Genes Cells* 2001; 6:619-29.  
Hosono K, Sasaki T, Minoshima S, et al. Identification and characterization of a novel gene family YPEL in a wide spectrum of eukaryotic species. *Gene* 2004; 340: 31-43  
Abiatari I, Kiladze M, Kerkadze V, et al. Expression of YPEL1 in pancreatic cancer cell lines and tissues. *Georgian Med. News* 2009; (175):60-2.