

**CLEC2A Antibody**  
**Catalog # ASC11520****Specification**

---

**CLEC2A Antibody - Product Information**

Application	WB, IF
Primary Accession	<a href="#">Q6UWV9</a>
Other Accession	<a href="#">NP_001124183</a> , <a href="#">195222725</a>
Reactivity	Human
Host	Rabbit
Clonality	Polyclonal
Isotype	IgG
Application Notes	CLEC2A antibody can be used for detection of CLEC2A by Western blot at 1 µg/mL. For immunofluorescence start at 20 µg/mL.

**CLEC2A Antibody - Additional Information**Gene ID **387836****Target/Specificity**

CLEC2A; CLEC2A antibody is human specific. Two alternatively spliced transcript variants have been observed.

**Reconstitution & Storage**

CLEC2A antibody can be stored at 4°C for three months and -20°C, stable for up to one year. As with all antibodies care should be taken to avoid repeated freeze thaw cycles. Antibodies should not be exposed to prolonged high temperatures.

**Precautions**

CLEC2A Antibody is for research use only and not for use in diagnostic or therapeutic procedures.

**CLEC2A Antibody - Protein Information****Name** CLEC2A**Synonyms** KACL**Function**

Plays a role in modulating the extent of T-cell expansion. Enhances the expansion of TCR-stimulated T-cells by increasing their survival through enhanced expression of anti-apoptotic proteins. May modulate the capacity of T-cells to home to lymph nodes through SELL. Facilitates dedicated immune recognition of keratinocytes via interaction with its receptor KLRF2 by stimulating natural killer cell mediated cytotoxicity.

**Cellular Location**

Cell membrane; Single-pass type II membrane protein

**Tissue Location**

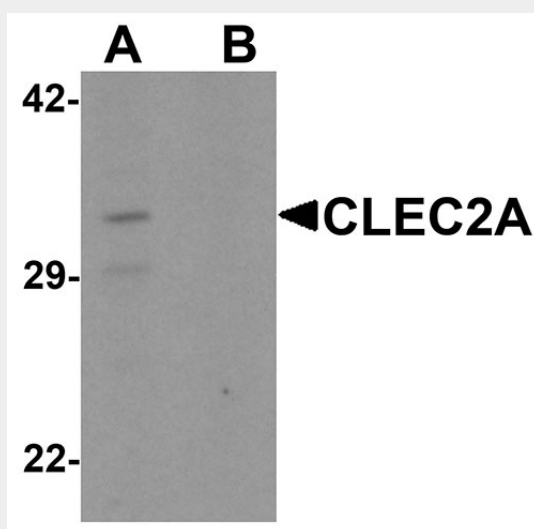
Mainly expressed in skin. Also expressed in keratinocytes, spleen, thymus, small intestine, peripheral blood monocytes, bone marrow, ovary, testis and skin. High expression in CD8(+), B-lymphocytes and naive CD4(+) T-cells. Restricted mostly to proliferating lymphocytes. Not detected in myeloid leukocytes or natural killer (NK) cells.

### CLEC2A Antibody - Protocols

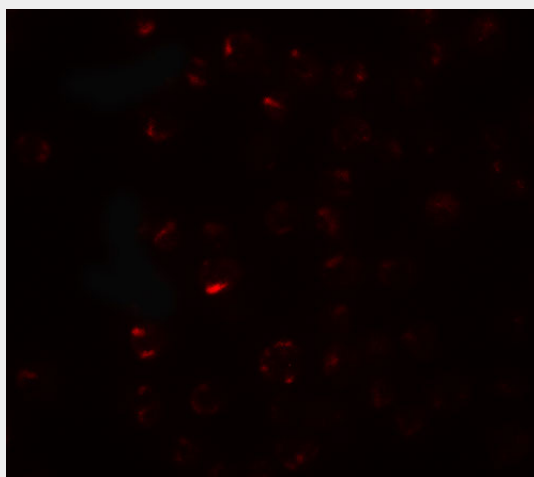
Provided below are standard protocols that you may find useful for product applications.

- [Western Blot](#)
- [Blocking Peptides](#)
- [Dot Blot](#)
- [Immunohistochemistry](#)
- [Immunofluorescence](#)
- [Immunoprecipitation](#)
- [Flow Cytometry](#)
- [Cell Culture](#)

### CLEC2A Antibody - Images



Western blot analysis of CLEC2A in K562 cell lysate with CLEC2A antibody at 1 µg/ml in (A) the absence and (B) the presence of blocking peptide.



Immunofluorescence of CLEC2A in K562 cells with CLEC2A antibody at 20 µg/mL.

### **CLEC2A Antibody - Background**

CLEC2A Antibody: CLEC2A (C-type lectin domain family 2 member A), also known as PILAR (proliferation-induced lymphocyte-associated receptor) is involved in modulating T-cell expansion. It is a 32 kDa single-pass type II membrane protein that contains one C-type lectin domain in its extracellular region and belongs to the CTL/CTLD superfamily. CLEC2A is mainly expressed in skin and highly expressed in CD8(+), B lymphocytes and naive CD4(+) T cells. Manipulation of CLEC2A signaling may be important for treatment of autoimmune diseases and cancer.

### **CLEC2A Antibody - References**

Huarte E, Cubillos-Ruiz JR, Nesbeth YC, et al. PILAR is a novel modulator of human T-cell expansion. *Blood* 2008; 112:1259-68.  
Drickamer K. C-type lectin-like domains. *Curr. Opin. Struct. Biol.* 1999; 9:585-90  
Spreu J, Kienle EC, Schrage B, et al. CLEC2A: a novel, alternatively spliced and skin-associated member of the NKC-encoded AICL-CD69-LLT1 family. *Immunogenetics* 2007; 59:903-12.  
Spreu J, Kuttruff S, Stejfova V, et al. Interaction of C-type lectin-like receptors NKp65 and KACL facilitates dedicated immune recognition of human keratinocytes. *Proc. Natl. Acad. Sci. USA* 2010; 107:5100-5.