

**CRIM1 Antibody**  
**Catalog # ASC11521****Specification**

---

**CRIM1 Antibody - Product Information**

Application	WB, IF
Primary Accession	<a href="#">Q9NZV1</a>
Other Accession	<a href="#">NP_057525</a> , <a href="#">10092639</a>
Reactivity	Human
Host	Rabbit
Clonality	Polyclonal
Isotype	IgG
Application Notes	CRIM1 antibody can be used for detection of Crim1 by Western blot at 1 µg/mL. For immunofluorescence start at 20 µg/mL.

**CRIM1 Antibody - Additional Information**Gene ID **51232****Target/Specificity**

CRIM1; CRIM1 antibody is human reactive. CRIM1 antibody is predicted to not cross-react with CRIM2.

**Reconstitution & Storage**

CRIM1 antibody can be stored at 4°C for three months and -20°C, stable for up to one year. As with all antibodies care should be taken to avoid repeated freeze thaw cycles. Antibodies should not be exposed to prolonged high temperatures.

**Precautions**

CRIM1 Antibody is for research use only and not for use in diagnostic or therapeutic procedures.

**CRIM1 Antibody - Protein Information****Name** CRIM1**Synonyms** S52**Function**

May play a role in CNS development by interacting with growth factors implicated in motor neuron differentiation and survival. May play a role in capillary formation and maintenance during angiogenesis. Modulates BMP activity by affecting its processing and delivery to the cell surface.

**Cellular Location**

[Processed cysteine-rich motor neuron 1 protein]: Secreted

**Tissue Location**

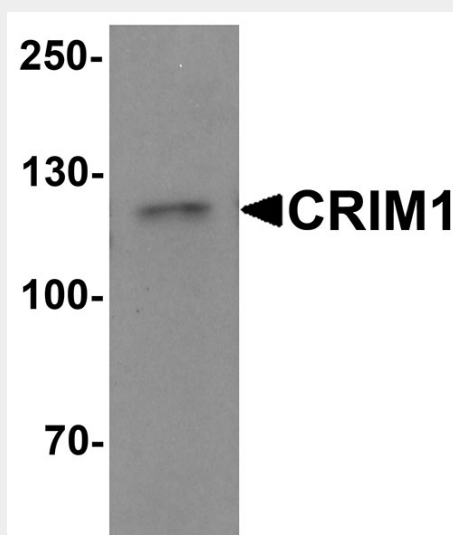
Expressed in pancreas, kidney, skeletal muscle, lung, placenta, brain, heart, spleen, liver and small intestine Expressed in blood vessels (at protein level)

## CRIM1 Antibody - Protocols

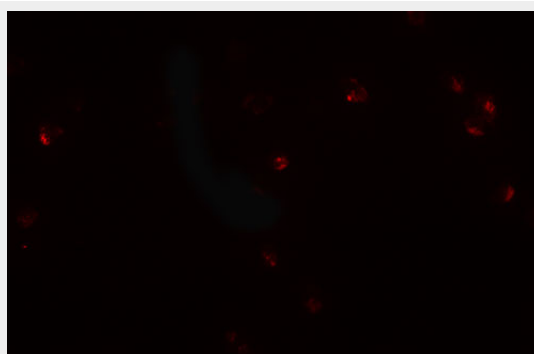
Provided below are standard protocols that you may find useful for product applications.

- [Western Blot](#)
- [Blocking Peptides](#)
- [Dot Blot](#)
- [Immunohistochemistry](#)
- [Immunofluorescence](#)
- [Immunoprecipitation](#)
- [Flow Cytometry](#)
- [Cell Culture](#)

## CRIM1 Antibody - Images



Western blot analysis of CRIM1 in Jurkat cell lysate with Crim1 antibody at 1 µg/mL.



Immunofluorescence of CRIM1 in Jurkat cells with CRIM1 antibody at 20 µg/mL.

## CRIM1 Antibody - Background

CRIM1 Antibody: CRIM1 (cysteine-rich motor neuron 1), a glycosylated type I transmembrane protein, plays a role in tissue development i.e. capillary formation and maintenance during angiogenesis. It contains an N-terminal IGF-binding protein-like motif and six von Willebrand-like cysteine-rich repeats (CRRs) in its extracellular domain. CRIM1 interacts with BMP4 and BMP7 via the CRRs and functions as an antagonist. CRIM1 is developmentally expressed in a number of

tissues including the pancreas, kidney, placenta, brain and blood vessels. CRIM1 may participate in CNS and placental development by interacting with growth factors involved in motor neuron differentiation and survival.

### **CRIM1 Antibody - References**

Kolle G, Georgas K, Holmes GP, et al. CRIM1, a novel gene encoding a cysteine-rich repeat protein, is developmentally regulated and implicated in vertebrate CNS development and organogenesis. *Mech. Dev.* 2000; 90:181-93.

Glienke J, Sturz A, Menrad A, et al. CRIM1 is involved in endothelial cell capillary formation in vitro and is expressed in blood vessels in vivo. *Mech. Dev.* 2002; 119:165-75.

Wilkinson L, Kolle G, Wen D, et al. CRIM1 regulates the rate of processing and delivery of bone morphogenetic proteins to the cell surface. *J. Biol. Chem.* 2003; 278:34181-8.

Pennisi DJ, Kinna G, Chiu HS, et al. Crim1 has an essential role in glycogen trophoblast cell and sinusoidal-trophoblast giant cell development in the placenta. *Placenta* 2012; 33:175-82.