

CASKIN1 Antibody
Catalog # ASC11530**Specification**

CASKIN1 Antibody - Product Information

Application	WB
Primary Accession	Q8WXD9
Other Accession	NP_065815 , 18079216
Reactivity	Human
Host	Rabbit
Clonality	Polyclonal
Isotype	IgG
Calculated MW	157 kDa KDa
Application Notes	CASKIN1 antibody can be used for detection of CASKIN1 by Western blot at 1 µg/mL.

CASKIN1 Antibody - Additional InformationGene ID **57524****Target/Specificity**

CASKIN1; CASKIN1 antibody is predicted to not cross-react with other CASKIN family members.

Reconstitution & Storage

CASKIN1 antibody can be stored at 4°C for three months and -20°C, stable for up to one year. As with all antibodies care should be taken to avoid repeated freeze thaw cycles. Antibodies should not be exposed to prolonged high temperatures.

Precautions

CASKIN1 Antibody is for research use only and not for use in diagnostic or therapeutic procedures.

CASKIN1 Antibody - Protein Information**Name** CASKIN1**Synonyms** KIAA1306**Function**

May link the scaffolding protein CASK to downstream intracellular effectors.

Cellular Location

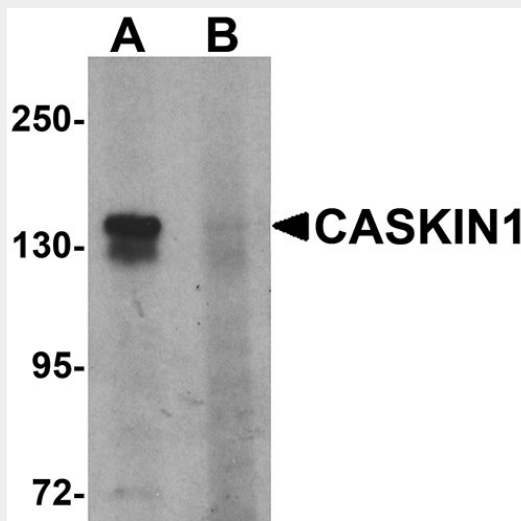
Cytoplasm.

CASKIN1 Antibody - Protocols

Provided below are standard protocols that you may find useful for product applications.

- [Western Blot](#)
- [Blocking Peptides](#)
- [Dot Blot](#)
- [Immunohistochemistry](#)
- [Immunofluorescence](#)
- [Immunoprecipitation](#)
- [Flow Cytometry](#)
- [Cell Culture](#)

CASKIN1 Antibody - Images



Western blot analysis of CASKIN1 in HeLa cell lysate with CASKIN1 antibody at 1 μ g/ml in (A) the absence and (B) the presence of blocking peptide.

CASKIN1 Antibody - Background

CASKIN1 Antibody: Calcium/calmodulin-dependent serine protein kinase (CASK) is a conserved multi-domain scaffolding protein involved in brain development, synapse formation, and establishment of cell polarity. CASKs (CASK interacting proteins) interact with CASK and is thought to play a role in CASK function, specifically by coupling CASK to distinct downstream effectors. CASKIN1 is a multidomain protein containing six N-terminal ankyrin repeats, one SH3 domain, and two sterile alpha motif domains followed by a long proline-rich sequence and a short conserved C-terminal domain. CASKIN1 coassembles with CASK on the cytoplasmic tail of neuroligin 1, suggesting that CASKIN and CASK coat the cytoplasmic tails of neuroligins and other cell-surface proteins.

CASKIN1 Antibody - References

Stafford RL, Ear J, Knight MJ, et al. The molecular basis of the Caskin1 and Mint1 interaction with CASK. *J. Mol. Biol.* 2011; 412:3-13.
Weng YL, Liu N, DiAntonio A, et al. The cytoplasmic adaptor protein Caskin mediates Lar signal transduction during *Drosophila* motor axon guidance. *Neurosci.* 2011; 31:4421-33.
Tabuchi K, Biederer T, Butz S, et al. CASK participates in alternative tripartite complexes in which Mint 1 competes for binding with CASKIN1, a novel CASK-binding protein. *J. Neurosci.* 2002; 22:4264-73.