

SHQ1 Antibody
Catalog # ASC11545**Specification**

SHQ1 Antibody - Product Information

| | |
|-------------------|---|
| Application | WB, IF |
| Primary Accession | Q6PI26 |
| Other Accession | NP_060600 , 56550033 |
| Reactivity | Human |
| Host | Rabbit |
| Clonality | Polyclonal |
| Isotype | IgG |
| Calculated MW | 63 kDa KDa |
| Application Notes | SHQ1 antibody can be used for detection of SHQ1 by Western blot at 1 µg/mL. For immunofluorescence start at 20 µg/mL. |

SHQ1 Antibody - Additional InformationGene ID **55164****Target/Specificity**

SHQ1; Multiple isoforms are known to exist.

Reconstitution & Storage

SHQ1 antibody can be stored at 4°C for three months and -20°C, stable for up to one year. As with all antibodies care should be taken to avoid repeated freeze thaw cycles. Antibodies should not be exposed to prolonged high temperatures.

Precautions

SHQ1 Antibody is for research use only and not for use in diagnostic or therapeutic procedures.

SHQ1 Antibody - Protein Information**Name** SHQ1**Function**

Required for the quantitative accumulation of H/ACA ribonucleoproteins (RNPs), including telomerase, probably through the stabilization of DKC1, from the time of its synthesis until its association with NOP10, NHP2, and NAF1 at the nascent H/ACA RNA.

Cellular Location

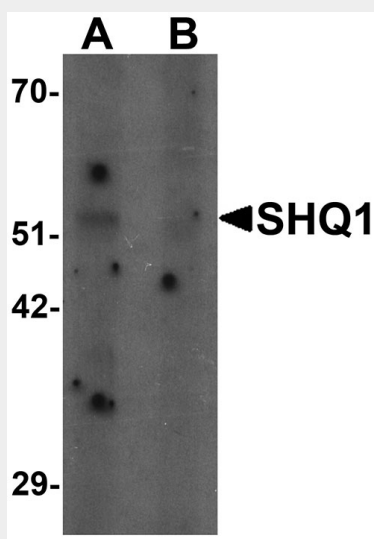
Cytoplasm, cytosol. Nucleus, nucleoplasm. Note=May at least partially shuttle between cytosol and nucleoplasm. In the nucleoplasm, exhibits a granular pattern, but is excluded from nucleoli and Cajal bodies. Absent from most H/ACA-box RNA transcription sites

SHQ1 Antibody - Protocols

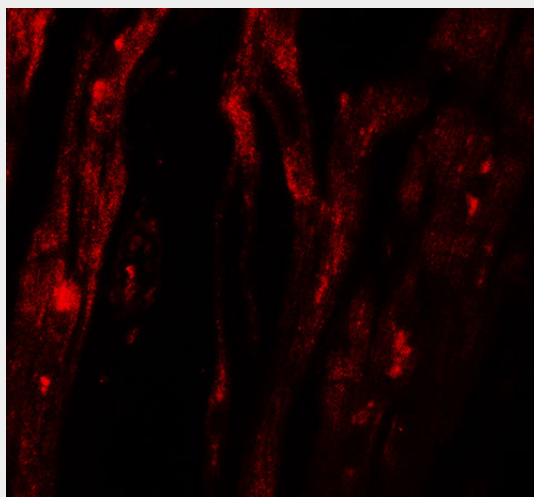
Provided below are standard protocols that you may find useful for product applications.

- [Western Blot](#)
- [Blocking Peptides](#)
- [Dot Blot](#)
- [Immunohistochemistry](#)
- [Immunofluorescence](#)
- [Immunoprecipitation](#)
- [Flow Cytometry](#)
- [Cell Culture](#)

SHQ1 Antibody - Images



Western blot analysis of SHQ1 in human heart tissue lysate with SHQ1 antibody at 1 μ g/mL in (A) the absence and (B) the presence of blocking peptide.



Immunofluorescence of SHQ1 in human heart tissue with SHQ1 antibody at 20 μ g/mL.

SHQ1 Antibody - Background

SHQ1 Antibody: SHQ1 is the human homolog of yeast Shq1p, a protein that acts as an accessory factor in the assembly of H/ACA ribonucleoproteins. SHQ1 has been shown to bind the major H/ACA core protein and the pseudouridine synthase NAP57, but precedes the assembly role of NAF1 and of

the other H/ACA core proteins. SHQ1 assists in the assembly of H/ACA-box ribonucleoproteins that function in the processing of ribosomal RNAs, modification of spliceosomal small nuclear RNAs, and stabilization of telomerase.

SHQ1 Antibody - References

Ito T, Chiba T, Ozawa R, et al. A comprehensive two-hybrid analysis to explore the yeast protein interactome. Proc. Natl. Acad. Sci. USA 2001; 98:4569-74.

Grozdanov PN, Roy S, Kittur N, et al. SHQ1 is required prior to NAF1 for assembly of H/ACA small nucleolar and telomerase RNPs. RNA 2009; 15:1188-97.