

FOXH1 Antibody
Catalog # ASC11573**Specification**

FOXH1 Antibody - Product Information

Application	WB, IF
Primary Accession	O75593
Other Accession	NP_003914 , 4503657
Reactivity	Human, Mouse, Rat
Host	Rabbit
Clonality	Polyclonal
Isotype	IgG
Calculated MW	40 kDa KDa
Application Notes	FOXH1 antibody can be used for detection of FOXH1 by Western blot at 1 - 2 µg/mL. For immunofluorescence start at 20 µg/mL.

FOXH1 Antibody - Additional InformationGene ID **8928****Target/Specificity**

FOXH1; FOXH1 antibody is predicted to not cross-react with any other members of the forkhead box family.

Reconstitution & Storage

FOXH1 antibody can be stored at 4°C for three months and -20°C, stable for up to one year. As with all antibodies care should be taken to avoid repeated freeze thaw cycles. Antibodies should not be exposed to prolonged high temperatures.

Precautions

FOXH1 Antibody is for research use only and not for use in diagnostic or therapeutic procedures.

FOXH1 Antibody - Protein Information**Name** FOXH1**Synonyms** FAST1, FAST2**Function**

Transcriptional activator. Recognizes and binds to the DNA sequence 5'-TGT[GT][GT]ATT-3'. Required for induction of the goosecoid (GSC) promoter by TGF-beta or activin signaling. Forms a transcriptionally active complex containing FOXH1/SMAD2/SMAD4 on a site on the GSC promoter called TARE (TGF-beta/activin response element).

Cellular Location

Nucleus.

Tissue Location

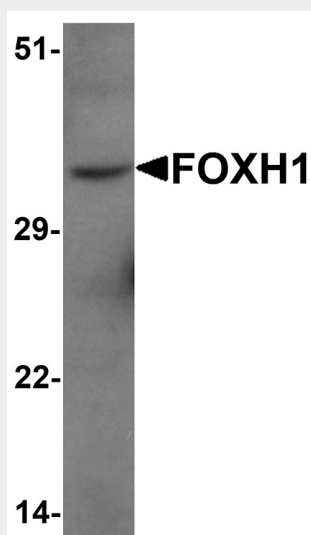
Ubiquitous..

FOXH1 Antibody - Protocols

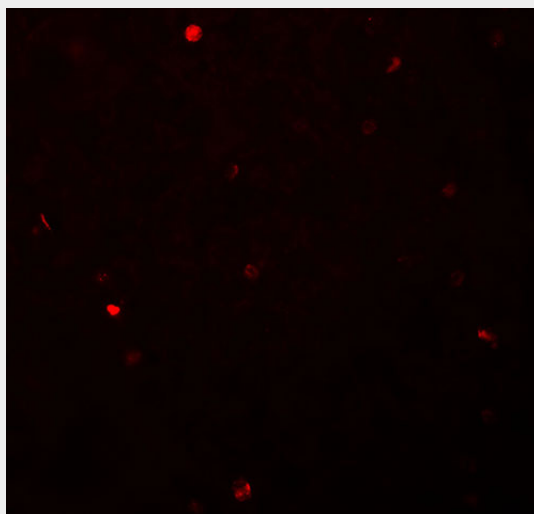
Provided below are standard protocols that you may find useful for product applications.

- [Western Blot](#)
- [Blocking Peptides](#)
- [Dot Blot](#)
- [Immunohistochemistry](#)
- [Immunofluorescence](#)
- [Immunoprecipitation](#)
- [Flow Cytometry](#)
- [Cell Culture](#)

FOXH1 Antibody - Images



Western blot analysis of FOXH1 in human liver tissue lysate with FOXH1 antibody at 1 μ g/mL.



Immunofluorescence of FOXH1 in human liver tissue with FOXH1 antibody at 20 μ g/mL.

FOXH1 Antibody - Background

FOXH1 Antibody: FOXH1 is a member of the Forkhead-box (FOX) family of transcription factors and is the human homolog of *Xenopus* forkhead activin signal transducer-1. FOXH1 plays an important role in mediating TGF-beta/activin signals through its interaction with the SMAD2-SMAD4 complex. It is expressed primarily during early development and localizes in the cytoplasm until it forms a complex with the SMAD proteins at which time it translocates to the nucleus to positively or negatively affect gene expression.

FOXH1 Antibody - References

Chen X, Weisberg E, Fridmacher V, et al. Smad and FAST-1 in the assembly of activin-responsive factor. *Nature* 1997; 389:85-9.
Zhou S, Zewel L, Lengauer C, et al. Characterization of human FAST-1, a TGF beta and activin signal transducer. *Mol. Cell* 1998; 2:121-7.
Attisano L, Silvestri C, Izzi L, et al. The transcriptional role of Smads and FAST (FoxH1) in TGFbeta and activin signaling. *Mol. Cell. Endocrinol.* 2001; 180:3-11.