

**FRL1 Antibody**  
**Catalog # ASC11576****Specification**

---

**FRL1 Antibody - Product Information**

Application	WB, IF
Primary Accession	<a href="#">O95466</a>
Other Accession	<a href="#">NP_005883</a> , <a href="#">33356148</a>
Reactivity	Human, Mouse, Rat
Host	Rabbit
Clonality	Polyclonal
Isotype	IgG
Calculated MW	121 kDa KDa
Application Notes	FRL1 antibody can be used for detection of FRL1 by Western blot at 1 - 2 µg/mL. For immunofluorescence start at 20 µg/mL.

**FRL1 Antibody - Additional Information**Gene ID **752****Target/Specificity**

FMNL1; FRL1 antibody is human, mouse and rat reactive. Three alternatively spliced transcript variants have been observed

**Reconstitution & Storage**

FRL1 antibody can be stored at 4°C for three months and -20°C, stable for up to one year. As with all antibodies care should be taken to avoid repeated freeze thaw cycles. Antibodies should not be exposed to prolonged high temperatures.

**Precautions**

FRL1 Antibody is for research use only and not for use in diagnostic or therapeutic procedures.

**FRL1 Antibody - Protein Information****Name** FMNL1**Synonyms** C17orf1, C17orf1B, FMNL, FRL1**Function**

May play a role in the control of cell motility and survival of macrophages (By similarity). Plays a role in the regulation of cell morphology and cytoskeletal organization. Required in the cortical actin filament dynamics and cell shape.

**Cellular Location**

Cytoplasm. Cell membrane; Lipid-anchor. Cytoplasmic vesicle, phagosome. Note=Recruited to actin-rich phagosomes during phagocytosis. Translocates to the plasma membrane upon activation by RAC1 (By similarity).



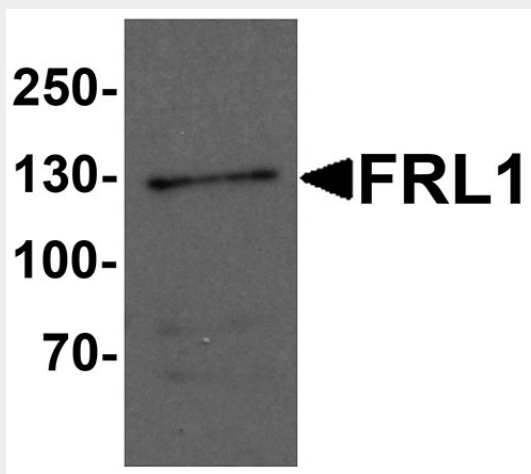
**Tissue Location**

Expressed in heart, brain, placenta, lung, liver, skeletal muscle, kidney and pancreas

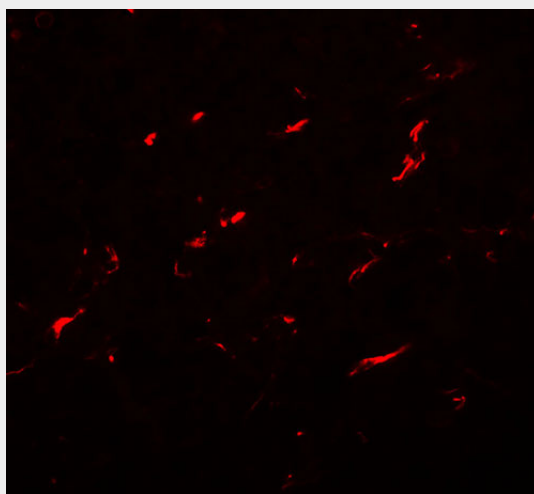
**FRL1 Antibody - Protocols**

Provided below are standard protocols that you may find useful for product applications.

- [Western Blot](#)
- [Blocking Peptides](#)
- [Dot Blot](#)
- [Immunohistochemistry](#)
- [Immunofluorescence](#)
- [Immunoprecipitation](#)
- [Flow Cytometry](#)
- [Cell Culture](#)

**FRL1 Antibody - Images**

Western blot analysis of FRL1 in EL4 cell lysate with FRL1 antibody at 1 µg/mL.



Immunofluorescence of FRL1 in EL4 cells with FRL1 antibody at 20 µg/mL.

**FRL1 Antibody - Background**



**FRL1 Antibody:** The Formin-like protein 1 (FRL1) gene encodes a formin-related protein which has been implicated in morphogenesis, cytokinesis, and cell polarity. Formins are a conserved class of proteins expressed in all eukaryotes and have one DAD (diaphanous autoregulatory domain), one FH2 (formin homology 2) domain and one GBD/FH3 (Rho GTPase-binding / formin homology 3) domain. FRL1 is located in the cytoplasm and is highly expressed in the spleen, lymph node and bone marrow cells. FRL1 possibly has a role in the control of cell motility, survival of macrophages and cytoskeletal organization.

#### **FRL1 Antibody - References**

Katoh M and Katoh M. Identification and characterization of human FMNL1, FMNL2 and FMNL3 genes in silico. *Int. J. Oncol.* 2003; 22:1161-8.

Yayoshi-Yamamoto S, Taniuchi I and Watanabe T. FRL, a novel formin-related protein, binds to Rac and regulates cell motility and survival of macrophages. *Mol. Cell. Biol.* 2000; 20: 6872-81.

Favaro PM, Traina F, Vassallo J, et al. High expression of FMNL1 protein in T non-Hodgkin's lymphomas. *Leuk. Res.* 2006; 30:735-8.

Gomez TS, Kumar K, Medeiros RB, et al. Formins regulate the actin-related protein 2/3 complex-independent polarization of the centrosome to the immunological synapse. *Immunity* 2007; 26:177-90.