

**SHROOM1 Antibody**  
**Catalog # ASC11580****Specification**

---

**SHROOM1 Antibody - Product Information**

Application	WB
Primary Accession	<a href="#">Q2M3G4</a>
Other Accession	<a href="#">NP_001166171</a> , <a href="#">289577098</a>
Reactivity	Human, Mouse, Rat
Host	Rabbit
Clonality	Polyclonal
Isotype	IgG
Calculated MW	94 kDa KDa
Application Notes	SHROOM1 antibody can be used for detection of SHROOM1 by Western blot at 1 - 2 µg/mL.

**SHROOM1 Antibody - Additional Information**Gene ID **134549****Target/Specificity**

SHROOM1; SHROOM1 antibody is human, mouse and rat reactive. At least three isoforms of SHROOM1 are known to exist; this antibody will detect only the two largest isoforms. SHROOM1 antibody is predicted to not cross-react with other SHROOM family members.

**Reconstitution & Storage**

SHROOM1 antibody can be stored at 4°C for three months and -20°C, stable for up to one year. As with all antibodies care should be taken to avoid repeated freeze thaw cycles. Antibodies should not be exposed to prolonged high temperatures.

**Precautions**

SHROOM1 Antibody is for research use only and not for use in diagnostic or therapeutic procedures.

**SHROOM1 Antibody - Protein Information****Name** SHROOM1**Synonyms** APXL2, KIAA1960**Function**

May be involved in the assembly of microtubule arrays during cell elongation.

**Cellular Location**

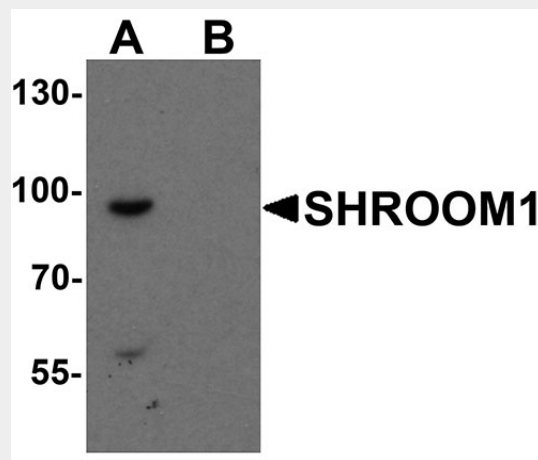
Cytoplasm, cytoskeleton.

## SHROOM1 Antibody - Protocols

Provided below are standard protocols that you may find useful for product applications.

- [Western Blot](#)
- [Blocking Peptides](#)
- [Dot Blot](#)
- [Immunohistochemistry](#)
- [Immunofluorescence](#)
- [Immunoprecipitation](#)
- [Flow Cytometry](#)
- [Cell Culture](#)

## SHROOM1 Antibody - Images



Western blot analysis of SHROOM1 in mouse heart tissue lysate with SHROOM1 antibody at 1  $\mu$ g/mL in (A) the absence and (B) the presence of blocking peptide.

## SHROOM1 Antibody - Background

SHROOM1 Antibody: SHROOM family members play diverse roles in the development of the nervous system and other tissues. SHROOM1 is a PDZ domain-containing actin-binding protein that is required for neural tube morphogenesis. It facilitates neurulation by regulating the morphology of neuroepithelial cells via the apical positioning of an actomyosin network in the neuroepithelium. SHROOM1 is also expressed in pulmonary arterial smooth muscle cells and its expression is significantly decreased in mouse and human models of pulmonary arterial hypertension, suggesting that there may be a link between SHROOM1 expression and pulmonary arterial hypertension.

## SHROOM1 Antibody - References

Lee C, Le MP, and Wallingford JB. The shroom family proteins play broad roles in the morphogenesis of thickened epithelial sheets. *Dev. Dyn.* 2009; 238:1480-91.  
Hildebrand JD and Soriano P. Shroom, a PDZ domain-containing actin-binding protein, is required for neural tube morphogenesis in mice. *Cell* 1999; 99:486-97  
Hildebrand JD. Shroom regulates epithelial cell shape via the apical positioning of an actomyosin network. *J. Cell Sci.* 2005; 118:5191-203.  
Sevilla-Perez J, Konigshoff M, Kwapiszewska G, et al. Shroom expression is attenuated in pulmonary arterial hypertension. *Eur. Respir. J.* 2008; 32:871-880.