

CHCHD7 Antibody
Catalog # ASC11585**Specification**

CHCHD7 Antibody - Product Information

Application	WB
Primary Accession	Q9BUK0
Other Accession	NP_077276 , 64464338
Reactivity	Human, Mouse, Rat
Host	Rabbit
Clonality	Polyclonal
Isotype	IgG
Calculated MW	Predicted: 11 kDa KDa
Application Notes	CHCHD7 antibody can be used for detection of CHCHD7 by Western blot at 1 - 2 µg/mL.

CHCHD7 Antibody - Additional InformationGene ID **79145****Target/Specificity**

CHCHD7; Three alternatively spliced transcript variants have been observed. CHCHD7 is predicted to not cross-react to other members of the CHCHD family.

Reconstitution & Storage

CHCHD7 antibody can be stored at 4°C for three months and -20°C, stable for up to one year.

Precautions

CHCHD7 Antibody is for research use only and not for use in diagnostic or therapeutic procedures.

CHCHD7 Antibody - Protein Information**Name** CHCHD7**Cellular Location**

Mitochondrion intermembrane space.

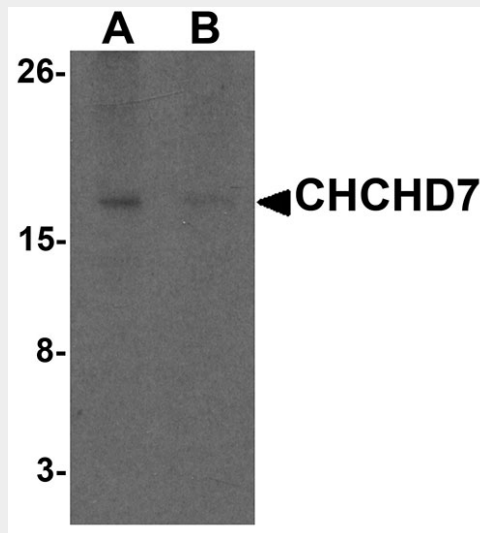
CHCHD7 Antibody - Protocols

Provided below are standard protocols that you may find useful for product applications.

- [Western Blot](#)
- [Blocking Peptides](#)
- [Dot Blot](#)
- [Immunohistochemistry](#)
- [Immunofluorescence](#)

- [Immunoprecipitation](#)
- [Flow Cytometry](#)
- [Cell Culture](#)

CHCHD7 Antibody - Images



Western blot analysis of CHCHD7 in rat liver tissue lysate with CHCHD7 antibody at 1 μ g/mL in (A) the absence and (B) the presence of blocking peptide.

CHCHD7 Antibody - Background

CHCHD7 Antibody: CHCHD7 is a newly identified member of a multifamily of proteins containing a conserved (coiled coil 1)-(helix 1)-(coiled coil 2)-(helix 2) domain. Northern blot analysis revealed that the gene is ubiquitously expressed. Its biological function is unknown and the gene has hitherto not been associated with neoplasia. CHCHD7 and PLAG1 are located head-to-head about 500 bp apart in 8q12. A chromosomal aberration involving CHCHD7 is found in salivary gland pleomorphic adenomas, the most common benign epithelial tumors of the salivary gland.

CHCHD7 Antibody - References

Asp J, Persson F, Kost-Alimova M, et al. CHCHD7-PLAG1 and TCEA1-PLAG1 gene fusions resulting from cryptic, intrachromosomal 8q rearrangements in pleomorphic salivary gland adenomas. *Genes Chromosomes Cancer* 2006; 45:820-8.

Nishimura S, Watanabe T, Mizoshita K, et al. Genome-wide association study identified three major QTL for carcass weight including the PLAG1-CHCHD7 QTN for stature in Japanese Black cattle. *BMC Genet.* 2012; 13:40.

Matsuyama A, Hisaoka M, and Hashimoto H. PLAG1 expression in cutaneous mixed tumors: an immunohistochemical and molecular genetic study. *Virchows Arch.* 2011; 459:539-45.