

**RRAS2 Antibody**  
**Catalog # ASC11622****Specification**

---

**RRAS2 Antibody - Product Information**

Application	WB
Primary Accession	<a href="#">P62070</a>
Other Accession	<a href="#">NP_036382</a> , <a href="#">21361416</a>
Reactivity	Human, Mouse
Host	Rabbit
Clonality	Polyclonal
Isotype	IgG
Calculated MW	22 kDa KDa
Application Notes	RRAS2 antibody can be used for detection of RRAS2 by Western blot at 1 - 2 µg/mL.

**RRAS2 Antibody - Additional Information**Gene ID **22800****Target/Specificity**

RRAS2; Two isoforms of RRAS2 exists as a result of alternative splicing event.

**Reconstitution & Storage**

RRAS2 antibody can be stored at 4°C for three months and -20°C, stable for up to one year.

**Precautions**

RRAS2 Antibody is for research use only and not for use in diagnostic or therapeutic procedures.

**RRAS2 Antibody - Protein Information****Name** RRAS2 ([HGNC:17271](#))**Synonyms** TC21**Function**

GTP-binding protein with GTPase activity involved in the regulation of MAPK signaling pathway, thereby controlling multiple cellular processes (PubMed:<a href="http://www.uniprot.org/citations/31130282" target="\_blank">31130282</a>). Involved in the regulation of MAPK signaling pathway (PubMed:<a href="http://www.uniprot.org/citations/31130282" target="\_blank">31130282</a>, PubMed:<a href="http://www.uniprot.org/citations/31130285" target="\_blank">31130285</a>). Regulation of craniofacial development (PubMed:<a href="http://www.uniprot.org/citations/31130282" target="\_blank">31130282</a>, PubMed:<a href="http://www.uniprot.org/citations/31130285" target="\_blank">31130285</a>).

**Cellular Location**

Cell membrane; Lipid-anchor; Cytoplasmic side. Golgi apparatus membrane; Lipid- anchor

### Tissue Location

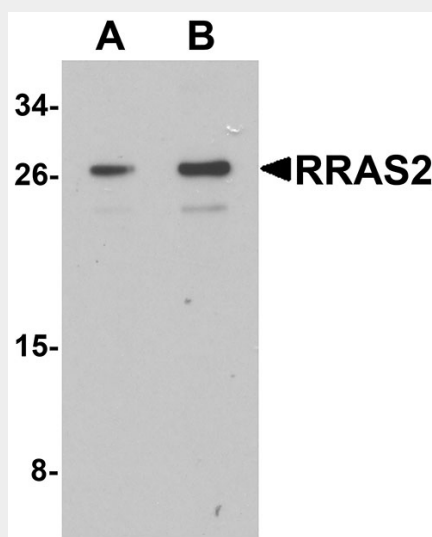
Ubiquitously present in all tissues examined, with the highest levels in heart, placenta, and skeletal muscle. Moderate levels in lung and liver; low levels in brain, kidney, and pancreas

### RRAS2 Antibody - Protocols

Provided below are standard protocols that you may find useful for product applications.

- [Western Blot](#)
- [Blocking Peptides](#)
- [Dot Blot](#)
- [Immunohistochemistry](#)
- [Immunofluorescence](#)
- [Immunoprecipitation](#)
- [Flow Cytometry](#)
- [Cell Culture](#)

### RRAS2 Antibody - Images



Western blot analysis of RRAS2 in Jurkat cell lysate with RRAS2 antibody at (A) 1 and (B) 2 µg/mL

### RRAS2 Antibody - Background

RRAS2 Antibody: Activating mutations and overexpression of classical Ras subfamily members (K-RAS, N-RAS and H-RAS) have been widely investigated as key events in the development of human cancers. The RRAS subfamily of Ras-related proteins includes RRAS1, RRAS2 (TC21) and RRAS3 (M-Ras) show overall amino acid identity with the classical Ras subfamily (H-Ras, K-Ras and N-Ras) of 55–60%. RRAS2 is a small GTPbinding protein of the Ras superfamily of GTPases. It might transduce growth inhibitory signals across the cell membrane, exerting its effect through an effector shared with the Ras proteins. RRAS2 has high oncogenic potential and overexpression/mutations have been reported in several tumor tissues and cell lines.

### RRAS2 Antibody - References

Ehrhardt A, Ehrhardt GR, Guo X, et al. Ras and relatives--job sharing and networking keep an old family together. *Exp. Hematol.* 2002; 30:1089-106.  
Lowe DG, Capon DJ, Delwart E, et al. Structure of the human and murine R-Ras genes, novel genes

closely related to Ras proto-oncogenes. Cell 1987; 48:137-46

Drivas GT, Shih A, Coutavas E, et al. Characterization of four novel Ras-like genes expressed in a human teratocarcinoma cell line. Mol. Cell. Biol. 1990;10:1793-8.

Luo H, Hao X, Ge C, et al. TC21 promotes cell motility and metastasis by regulating the expression of E-cadherin and N-cadherin in hepatocellular carcinoma. Int. J. Oncol. 2010; 37:853-9