

Nucleobindin-2 Antibody
Catalog # ASC11631**Specification**

Nucleobindin-2 Antibody - Product Information

| | |
|-------------------|---|
| Application | WB, IHC, IF |
| Primary Accession | P80303 |
| Other Accession | NP_005004 , 4826870 |
| Reactivity | Human, Mouse, Rat |
| Host | Rabbit |
| Clonality | Polyclonal |
| Isotype | IgG |
| Calculated MW | Predicted: 46 kDa |

| | |
|-------------------|--|
| Application Notes | Observed: 54 kDa KDa Nucleobindin-2 Antibody can be used for detection of Nucleobindin-2 by Western blot starting at 0.5 µg/mL. |
|-------------------|--|

Nucleobindin-2 Antibody - Additional Information

Gene ID 4925

Target/Specificity

NUCB2; Nucleobindin-2 antibody is predicted to not cross-react with NUCB1.

Reconstitution & Storage

Nucleobindin-2 antibody can be stored at 4°C for three months and -20°C, stable for up to one year.

Precautions

Nucleobindin-2 Antibody is for research use only and not for use in diagnostic or therapeutic procedures.

Nucleobindin-2 Antibody - Protein Information

Name NUCB2 ([HGNC:8044](#))

Synonyms NEFA

Function

Calcium-binding protein which may have a role in calcium homeostasis (By similarity). Acts as a non-receptor guanine nucleotide exchange factor which binds to and activates guanine nucleotide-binding protein (G-protein) alpha subunit GNAI3 (By similarity).

Cellular Location

Golgi apparatus. Membrane; Peripheral membrane protein. Cytoplasm Secreted. Endoplasmic reticulum. Nucleus envelope. Note=Golgi retention is mediated by its N-terminal region

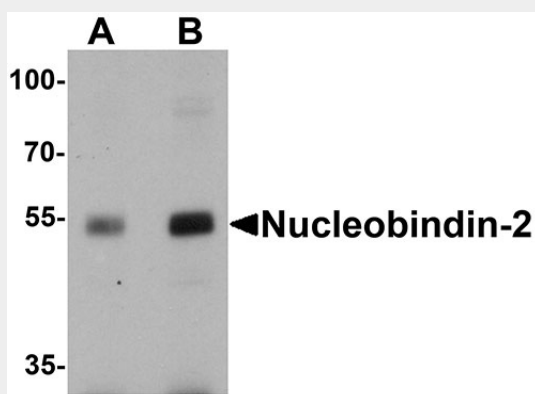
Tissue Location

Predominantly expressed in spleen, testis and normal stomach.

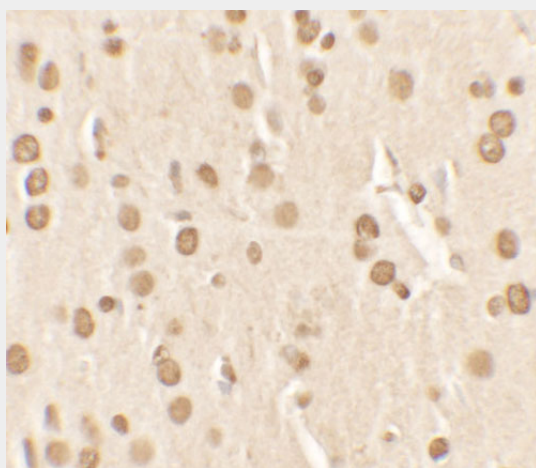
Nucleobindin-2 Antibody - Protocols

Provided below are standard protocols that you may find useful for product applications.

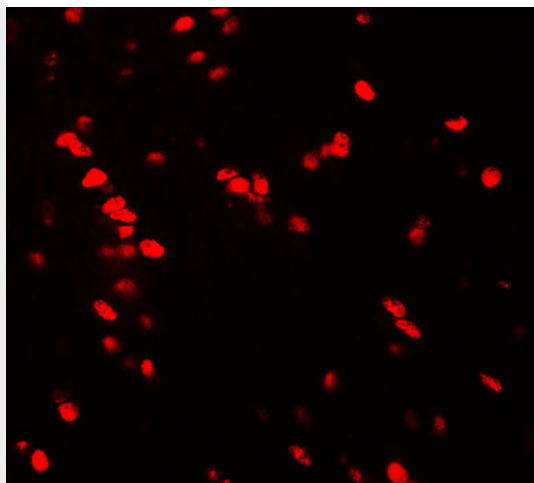
- [Western Blot](#)
- [Blocking Peptides](#)
- [Dot Blot](#)
- [Immunohistochemistry](#)
- [Immunofluorescence](#)
- [Immunoprecipitation](#)
- [Flow Cytometry](#)
- [Cell Culture](#)

Nucleobindin-2 Antibody - Images

Western blot analysis of Nucleobindin-2 in rat brain tissue lysate with Nucleobindin-2 antibody at (A) 0.5 and (B) 1 µg/mL.



Immunohistochemistry of Nucleobindin-2 in rat brain tissue with Nucleobindin-2 antibody at 2.5 µg/ml.



Immunofluorescence of Nucleobindin-2 in rat brain tissue with Nucleobindin-2 antibody at 20 μ g/ml.

Nucleobindin-2 Antibody - Background

Nucleobindin-2 Antibody: NUCB2 was initially identified as calcium-binding protein EF hand motif-containing protein that could bind with Necdin, a growth suppressor expressed primarily in postmitotic neurons. NUC2 is a secreted protein that is cleaved into three major peptide products, Nesfatin-1, Nesfatin-2, and Nesfatin-3, of which Nesfatin-1 has been found to cause the suppression of food intake in a leptin-independent manner. Other studies have suggested that NUCB2/Nesfatin-1 may also play roles in energy homeostasis and closely related neuroendocrine functions.

Nucleobindin-2 Antibody - References

Taniguchi N, Taniura H, Niinobe M, et al. The postmitotic growth suppressor necdin interacts with a calcium-binding protein (NEFA) in neuronal cytoplasm. *J. Biol. Chem.* 2000; 275:31674-85.
Oh IS, Shimizu H, Satoh T, et al. Identification of nesfatin-1 as a satiety molecule in the hypothalamus. *Nature* 2006; 443:709-12.
Garcia-Galiano D, Navarro VM, Gaytan F, et al. Expanding roles of NUCB2/nesfatin-1 in neuroendocrine regulation. *J. Mol. Endocrin.* 2010; 45:281-90.