

MOSPD1 Antibody
Catalog # ASC11634**Specification**

MOSPD1 Antibody - Product Information

Application	WB, IHC, IF
Primary Accession	Q9UJG1
Other Accession	NP_062456 , 9506543
Reactivity	Human, Mouse, Rat
Host	Rabbit
Clonality	Polyclonal
Isotype	IgG
Calculated MW	Predicted: 23 kDa
Application Notes	Observed: 25 kDa KDa MOSPD1 Antibody can be used for detection of MOSPD1 by Western blot at 1 µg/mL.

MOSPD1 Antibody - Additional Information

Gene ID	56180
Target/Specificity	
MOSPD1;	

Reconstitution & Storage

MOSPD1 antibody can be stored at 4°C for three months and -20°C, stable for up to one year.

Precautions

MOSPD1 Antibody is for research use only and not for use in diagnostic or therapeutic procedures.

MOSPD1 Antibody - Protein Information

Name MOSPD1

Function

Plays a role in differentiation and/or proliferation of mesenchymal stem cells. Proposed to be involved in epithelial-to- mesenchymal transition (EMT). However, another study suggests that it is not required for EMT or stem cell self-renewal and acts during later stages of differentiation.

Cellular Location

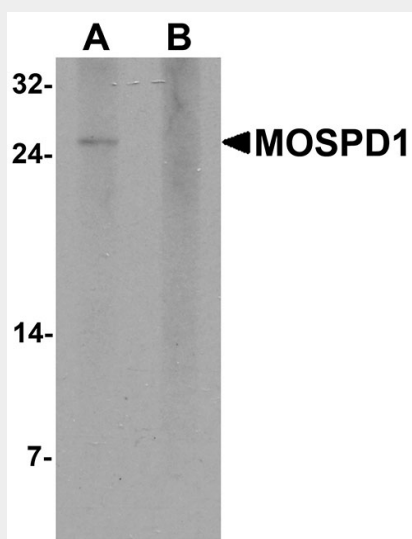
Endoplasmic reticulum membrane {ECO:0000250|UniProtKB:Q8VEL0}; Multi-pass membrane protein. Golgi apparatus membrane {ECO:0000250|UniProtKB:Q8VEL0}; Multi-pass membrane protein

MOSPD1 Antibody - Protocols

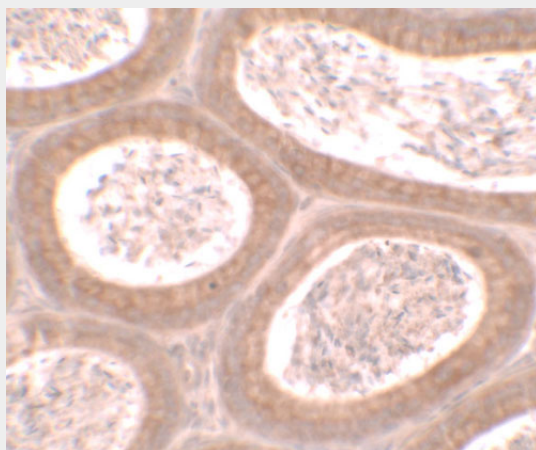
Provided below are standard protocols that you may find useful for product applications.

- [Western Blot](#)
- [Blocking Peptides](#)
- [Dot Blot](#)
- [Immunohistochemistry](#)
- [Immunofluorescence](#)
- [Immunoprecipitation](#)
- [Flow Cytometry](#)
- [Cell Culture](#)

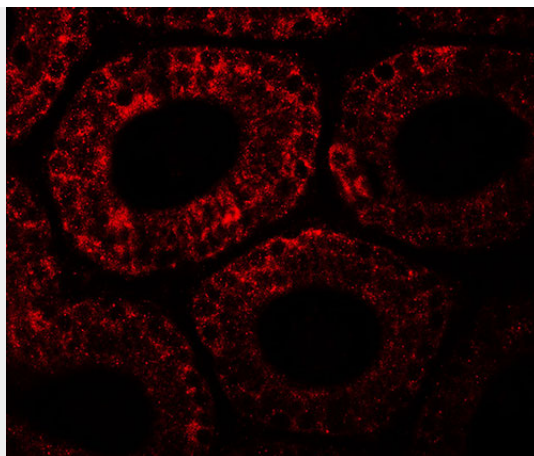
MOSPD1 Antibody - Images



Western blot analysis of MOSPD1 in human brain tissue lysate with MOSPD1 antibody at 1 $\mu\text{g/mL}$ in (A) the absence and (B) the presence of blocking peptide.



Immunohistochemistry of MOSPD1 in mouse testis tissue with MOSPD1 antibody at 2.5 $\mu\text{g/mL}$.



Immunofluorescence of MOSPD1 in mouse testis tissue with MOSPD1 antibody at 20 µg/ml.

MOSPD1 Antibody - Background

MOSPD1 Antibody: The Motile sperm domain-containing protein 1 (MOSPD1) is part of a family of proteins defined by the presence of a major sperm protein (MSP) domain and two transmembrane domains. MOSPD1 codes for a small protein that localizes to the endoplasmic reticulum (ER) and the Golgi apparatus and has been suggested to play a role in the developmental regulation at the switch between mesenchymal and epithelial cells.

MOSPD1 Antibody - References

Pall GS, Wallis J, Axton R, et al. A novel transmembrane MSP-containing protein that plays a role in the right ventricle development. *Genomics* 2004; 84:1051-9.

Thaler R, Rumpler M, Spitzer S, et al. Mospd1, a new player in mesenchymal versus epidermal cell differentiation. *J. Cell Physiol.* 2011; 226:2505-15.