

HIV-1 p24 Antibody
Catalog # ASC11649**Specification**

HIV-1 p24 Antibody - Product Information

Application	WB
Primary Accession	P04591
Other Accession	AAB50258 , 327745
Reactivity	Virus
Host	Rabbit
Clonality	Polyclonal
Isotype	IgG
Calculated MW	24 kDa KDa
Application Notes	P24 antibody can be used for detection of p24 by Western blot at 0.5 - 1 µg/mL.

HIV-1 p24 Antibody - Additional InformationGene ID **155030****Target/Specificity**

GAG; P24 antibody detects a 24 kDa recombinant protein.

Reconstitution & Storage

HIV-1 p24 antibody can be stored at 4°C for three months and -20°C, stable for up to one year.

Precautions

HIV-1 p24 Antibody is for research use only and not for use in diagnostic or therapeutic procedures.

HIV-1 p24 Antibody - Protein Information**Name gag****Function**

[Gag polyprotein]: Mediates, with Gag-Pol polyprotein, the essential events in virion assembly, including binding the plasma membrane, making the protein-protein interactions necessary to create spherical particles, recruiting the viral Env proteins, and packaging the genomic RNA via direct interactions with the RNA packaging sequence (Psi).

Cellular Location

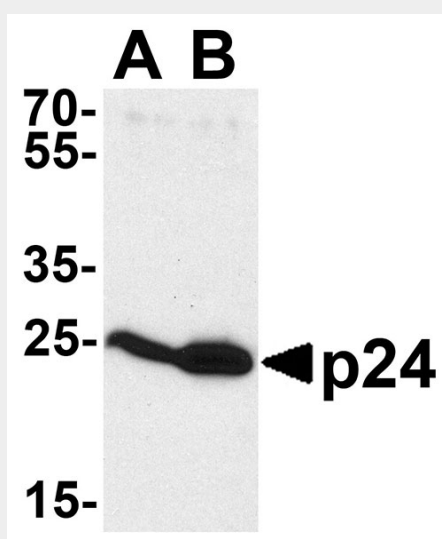
[Gag polyprotein]: Host cell membrane; Lipid- anchor. Host endosome, host multivesicular body {ECO:0000250|UniProtKB:P12493}. Note=These locations are probably linked to virus assembly sites. The main location is the cell membrane, but under some circumstances, late endosomal compartments can serve as productive sites for virion assembly. {ECO:0000250|UniProtKB:P12493} [Capsid protein p24]: Virion.

HIV-1 p24 Antibody - Protocols

Provided below are standard protocols that you may find useful for product applications.

- [Western Blot](#)
- [Blocking Peptides](#)
- [Dot Blot](#)
- [Immunohistochemistry](#)
- [Immunofluorescence](#)
- [Immunoprecipitation](#)
- [Flow Cytometry](#)
- [Cell Culture](#)

HIV-1 p24 Antibody - Images



Western blot analysis of p24 using p24 antibody at 0.5 µg/mL to detect (A) 2 ng and (B) 10 ng of recombinant HIV-1 p24.

HIV-1 p24 Antibody - Background

HIV-1 p24 Antibody: The human immunodeficiency virus type 1 (HIV-1) particle consists of an envelope, a core and the region between the two termed matrix. The HIV-1 Gag protein is a late structural protein that contains four proteins: matrix (p17), capsid (p24), nucleocapsid (p7) and the p6 protein. The p24 is the major capsid protein of the virus and has been used in clinical trials as one of the components of the HIV-1 vaccine because of the high degree of sequence conservation between different strains.

HIV-1 p24 Antibody - References

Goto T, Nakai M, and Ikuta K. The life-cycle of human immunodeficiency virus type 1. *Micron* 1998; 29:123-38.
Freed EO. HIV-1 gag proteins: diverse functions in the virus life cycle. *Virology* 1998; 251:1-15.
Lindenburg CE, Stolte I, Langendam MW, et al. Long-term follow-up : no effect of therapeutic vaccination with HIV-1 p17/p24:Ty virus-like particles on HIV-1 disease progression. *Vaccine* 2002 ; 20 :2343-7.