

TLX1 Antibody
Catalog # ASC11661**Specification**

TLX1 Antibody - Product Information

Application	WB, IHC
Primary Accession	P31314
Other Accession	NP_005512 , 5031757
Reactivity	Human, Mouse, Rat
Host	Rabbit
Clonality	Polyclonal
Isotype	IgG
Calculated MW	Predicted: 36 kDa
Application Notes	Observed: 35 kDa KDa TLX1 antibody can be used for detection of TLX1 by Western blot at 1 - 2 µg/mL.

TLX1 Antibody - Additional Information

Gene ID 3195

Target/Specificity

TLX1; Multiple isoforms of TLX1 exist due to alternative splicing events. TLX1 antibody is predicted to not cross-react with other TLX proteins.

Reconstitution & Storage

TLX1 antibody can be stored at 4°C for three months and -20°C, stable for up to one year.

Precautions

TLX1 Antibody is for research use only and not for use in diagnostic or therapeutic procedures.

TLX1 Antibody - Protein Information**Name** TLX1**Synonyms** HOX11, TCL3**Function**

Controls the genesis of the spleen. Binds to the DNA sequence 5'-GGCGGTAAGTGG-3'.

Cellular Location

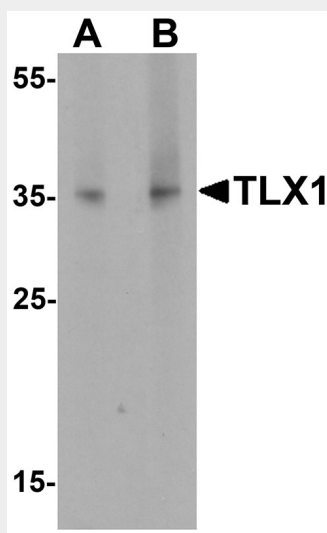
Nucleus.

TLX1 Antibody - Protocols

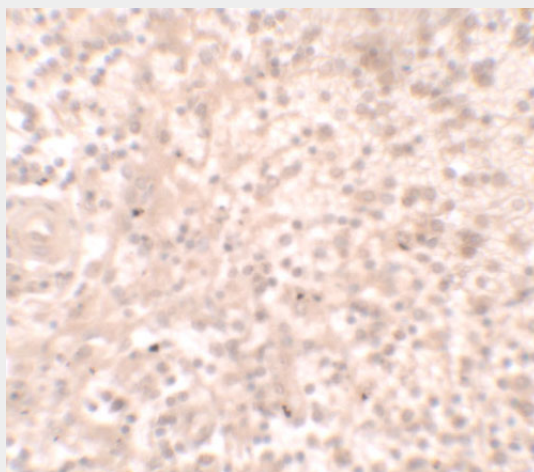
Provided below are standard protocols that you may find useful for product applications.

- [Western Blot](#)
- [Blocking Peptides](#)
- [Dot Blot](#)
- [Immunohistochemistry](#)
- [Immunofluorescence](#)
- [Immunoprecipitation](#)
- [Flow Cytometry](#)
- [Cell Culture](#)

TLX1 Antibody - Images



Western blot analysis of TLX1 in mouse spleen tissue lysate with TLX1 antibody at (A) 1 µg/mL and (B) 2 µg/mL.



Immunohistochemistry of TLX1 in human spleen tissue with TLX1 antibody at 2.5 µg/mL.

TLX1 Antibody - Background

TLX1 Antibody: The Hox proteins play a role in patterns of embryonic development and cellular differentiation by regulating downstream target genes. TLX1, also called homeobox11 (HOX11), as it is located outside of the four mammalian Hox clusters, is a DNA-binding nuclear transcription factor. TLX1 encodes a homeobox-domain containing protein and is containing a glycine and proline-rich amino terminus. TLX1 is required for maintenance of the developing spleen and cell survival. TLX1 is highly expressed in T-cell leukemia and lymphoid neoplasias as a result of

translocation. TLX1-deficient mice have no spleen.

TLX1 Antibody - References

Dear TN, Sanchez-Garcia I, and Rabbitts TH, et al. The Hox11 gene encodes a DNA-binding nuclear transcription factor belonging to a distinct family of homeobox genes. Proc. Natl. Acad. Sci. USA 1993; 90:4431-5.

Dube ID, Kamel-Reid S, Yuan CC, et al. A novel human homeobox gene lies at the chromosome 10 breakpoint in lymphoid neoplasias with chromosomal translocation t (10;14). Blood 1991; 78:2996-3003.

Hatano M, Roberts CW, Minden M, et al. Deregulation of a homeobox gene, Hox11, by the t (10;14) in T cell leukemia. Science 1991; 253:79-82.

Roberts CW, Shutter JR, Korsmeyer SJ et al. Hox11 controls the genesis of the spleen. Nature 1994; 368:747-9.