

WFDC2 Antibody
Catalog # ASC11692**Specification**

WFDC2 Antibody - Product Information

Application	WB, IHC, IF
Primary Accession	Q14508
Other Accession	NP_006094 , 56699495
Reactivity	Human
Host	Rabbit
Clonality	Polyclonal
Isotype	IgG
Calculated MW	Predicted: 14 kDa
Application Notes	Observed: 20kDa KDa WFDC2 antibody can be used for detection of WFDC2 by Western blot at 1 - 2 µg/ml.

WFDC2 Antibody - Additional Information

Gene ID **10406**
Target/Specificity
WFDC2; WFDC2 antibody is human specific. Multiple isoforms of WFDC2 are known to exist.

Reconstitution & Storage
WFDC2 antibody can be stored at 4°C for three months and -20°C, stable for up to one year.

Precautions
WFDC2 Antibody is for research use only and not for use in diagnostic or therapeutic procedures.

WFDC2 Antibody - Protein Information

Name WFDC2

Synonyms HE4, WAP5

Function
Broad range protease inhibitor.

Cellular Location
Secreted

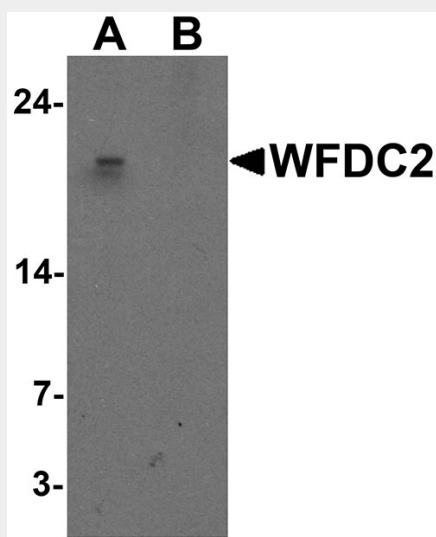
Tissue Location
Expressed in a number of normal tissues, including male reproductive system, regions of the respiratory tract and nasopharynx. Highly expressed in a number of tumors cells lines, such ovarian, colon, breast, lung and renal cells lines. Initially described as being exclusively transcribed in the epididymis

WFDC2 Antibody - Protocols

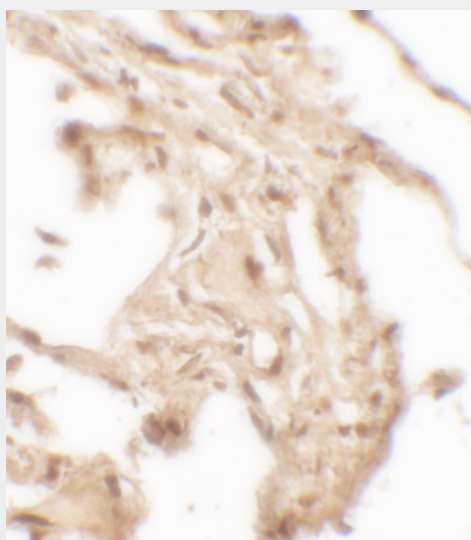
Provided below are standard protocols that you may find useful for product applications.

- [Western Blot](#)
- [Blocking Peptides](#)
- [Dot Blot](#)
- [Immunohistochemistry](#)
- [Immunofluorescence](#)
- [Immunoprecipitation](#)
- [Flow Cytometry](#)
- [Cell Culture](#)

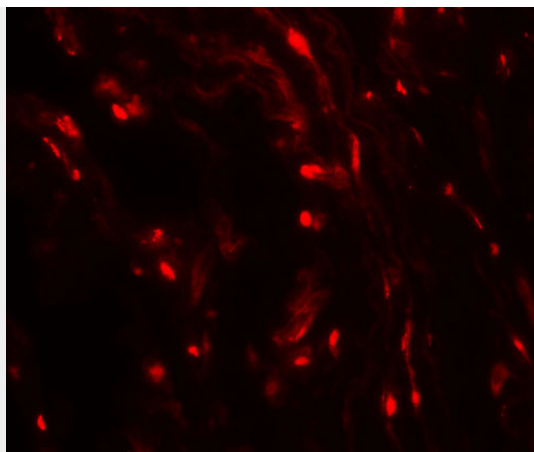
WFDC2 Antibody - Images



Western blot analysis of WFDC2 in A549 cell lysate with WFDC2 antibody at 1 μ g/ml in (A) the absence and (B) the presence of blocking peptide.



Immunohistochemistry of WFDC2 in human lung tissue with WFDC2 antibody at 2.5 μ g/mL.



Immunofluorescence of WFDC2 in human lung tissue with WFDC2 antibody at 20 µg/mL.

WFDC2 Antibody - Background

The WAP four-disulfide core domain protein 2 (WFDC2), also known as epididymal protein 4, is a member of the WFDC domain family, a family of proteins that is characterized by the presence of Whey Acidic Protein (WAP) domain, and is highly expressed in the lung and salivary gland (1,2). Members of this family include SLPI and elafin, antiproteinases involved in the innate immune system (2). WFDC2 has been proposed to play a critical role in tumor formation and growth in ovarian cancer cells through the regulation of growth- and apoptosis-associated genes and may thus be a potential therapeutic target for epithelial ovarian cancer (3).

WFDC2 Antibody - References

- Drapkin R, von Horsten HH, Lin Y, et al. Human epididymis protein 4 (HE4) is a secreted glycoprotein that is overexpressed by serious and endometrioid ovarian carcinomas. *Cancer Res.* 2005; 65:2162-9.
- Bingle L, Cross SS, High AS, et al. WFDC2 (HE4): A potential role in the innate immunity of the oral cavity and respiratory tract and the development of adenocarcinomas of the lung. *Resp. Res.* 2006; 7:61.
- Chen Y, Mu X, Wang S, et al. WAP four-disulfide core domain protein 2 mediates the proliferation of human ovarian cancer cells through the regulation of growth- and apoptosis-associated genes. *Oncol. Rep.* 2013; 29:288-96.