

**TOPAZ1 Antibody**  
**Catalog # ASC11780****Specification**

---

**TOPAZ1 Antibody - Product Information**

Application	WB, IHC, IF
Primary Accession	<a href="#">Q8N9V7</a>
Other Accession	<a href="#">NP_001138502</a> , <a href="#">222537754</a>
Reactivity	Human, Mouse, Rat
Host	Rabbit
Clonality	Polyclonal
Isotype	IgG
Calculated MW	Predicted: 65, 186 kDa

## Application Notes

Observed: 60, 240 kDa KDa  
TOPAZ1 antibody can be used for detection of TOPAZ1 by Western blot at 1 - 2 µg/ml. Antibody can also be used for Immunohistochemistry at 5 µg/mL. For Immunofluorescence start at 20 µg/mL.

**TOPAZ1 Antibody - Additional Information**Gene ID **375337****Target/Specificity**

TOPAZ1; TOPAZ1 antibody is human, mouse and rat reactive. At least three isoforms of TOPAZ1 are known to exist.

**Reconstitution & Storage**

TOPAZ1 antibody can be stored at 4°C for three months and -20°C, stable for up to one year.

**Precautions**

TOPAZ1 Antibody is for research use only and not for use in diagnostic or therapeutic procedures.

**TOPAZ1 Antibody - Protein Information****Name** TOPAZ1**Synonyms** C3orf77**Function**

Important for normal spermatogenesis and male fertility. Specifically required for progression to the post-meiotic stages of spermatocyte development. Seems to be necessary for normal expression levels of a number of testis-expressed gene transcripts, although its role in this process is unclear.

**Cellular Location**

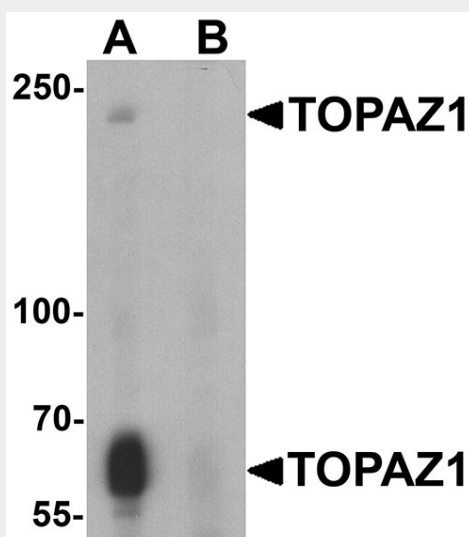
Cytoplasm, cytosol {ECO:0000250|UniProtKB:E5FYH1}

## TOPAZ1 Antibody - Protocols

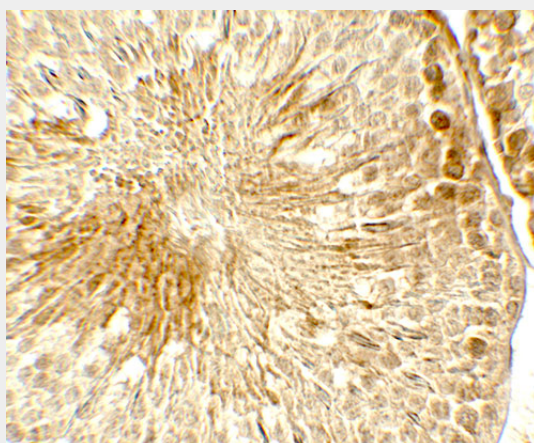
Provided below are standard protocols that you may find useful for product applications.

- [Western Blot](#)
- [Blocking Peptides](#)
- [Dot Blot](#)
- [Immunohistochemistry](#)
- [Immunofluorescence](#)
- [Immunoprecipitation](#)
- [Flow Cytometry](#)
- [Cell Culture](#)

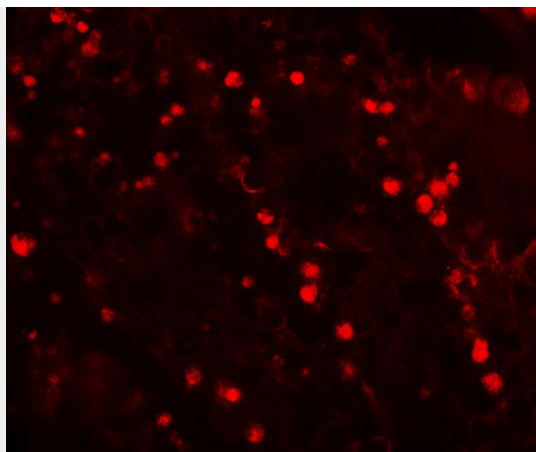
## TOPAZ1 Antibody - Images



Western blot analysis of TOPAZ1 in human testis tissue lysate with TOPAZ1 antibody at 1  $\mu$ g/ml in (A) the absence and (B) the presence of blocking peptide.



Immunohistochemistry of TOPAZ1 in rat testis tissue with TOPAZ1 antibody at 5  $\mu$ g/mL.



Immunofluorescence of TOPAZ1 in rat testis tissue with TOPAZ1 antibody at 20 µg/mL.

#### **TOPAZ1 Antibody - Background**

The testis and ovary specific PAZ domain containing 1 (TOPAZ1) protein is a highly conserved protein that is highly expressed in the gonads during germ cell meiosis, suggesting that it may play a role in germ cell development (1). It contains a PAZ domain and a zinc finger domain and is exclusively expressed in adult testis and fetal ovary.

#### **TOPAZ1 Antibody - References**

Baillet A, Le Bouffant R, Volff JN, et al. TOPAZ1, a novel germ cell-specific expressed gene conserved during evolution across vertebrates. PLoS One 2011; 6:e26950.