

E2F3 Antibody
Catalog # ASC11836**Specification**

E2F3 Antibody - Product Information

Application	WB, IHC, IF
Primary Accession	O00716
Other Accession	NP_001940 , 4503433
Reactivity	Human, Mouse
Host	Rabbit
Clonality	Polyclonal
Isotype	IgG
Calculated MW	Predicted: 51 kDa

Application Notes	Observed: 56 kDa KDa E2F3 antibody can be used for detection of E2F3 by Western blot at 1 - 2 µg/ml. Antibody can also be used for Immunohistochemistry starting at 5 µg/mL. For immunofluorescence start at 20 µg/mL.
-------------------	---

E2F3 Antibody - Additional Information

Gene ID **1871**

Target/Specificity

E2F3; E2F3 antibody is human and mouse reactive. At least three isoforms of E2F3 are known to exist; this antibody will detect only the largest isoform. This antibody is predicted to not cross-react with other members of the E2F transcription factor family.

Reconstitution & Storage

E2F3 antibody can be stored at 4°C for three months and -20°C, stable for up to one year.

Precautions

E2F3 Antibody is for research use only and not for use in diagnostic or therapeutic procedures.

E2F3 Antibody - Protein Information

Name E2F3

Synonyms KIAA0075

Function

Transcription activator that binds DNA cooperatively with DP proteins through the E2 recognition site, 5'-TTTC[CG]CGC-3' found in the promoter region of a number of genes whose products are involved in cell cycle regulation or in DNA replication. The DRTF1/E2F complex functions in the control of cell-cycle progression from G1 to S phase. E2F3 binds specifically to RB1 in a cell-cycle dependent manner. Inhibits adipogenesis, probably through the repression of CEBPA binding to its target gene promoters (By similarity).

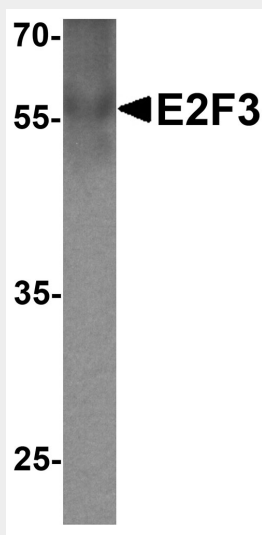
Cellular Location

Nucleus.

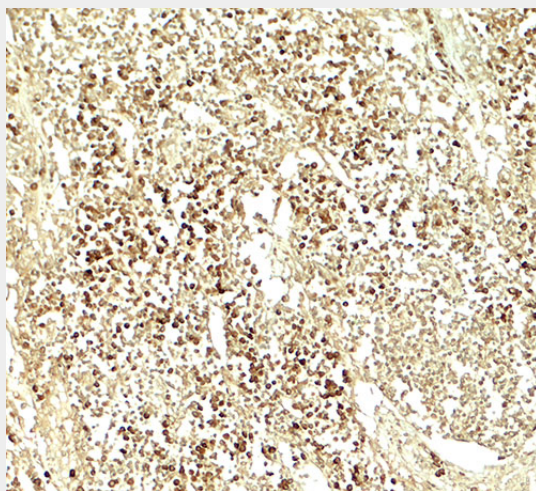
E2F3 Antibody - Protocols

Provided below are standard protocols that you may find useful for product applications.

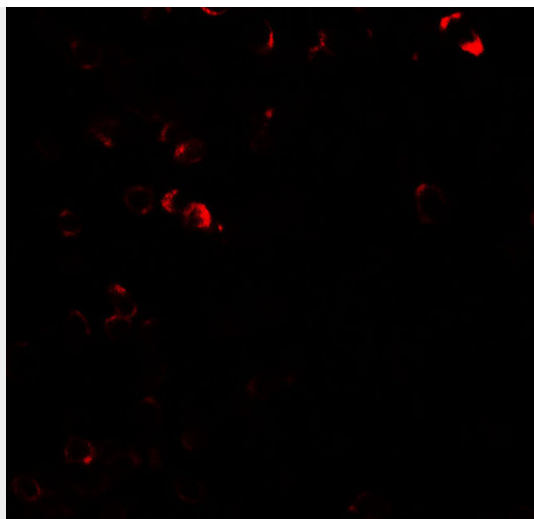
- [Western Blot](#)
- [Blocking Peptides](#)
- [Dot Blot](#)
- [Immunohistochemistry](#)
- [Immunofluorescence](#)
- [Immunoprecipitation](#)
- [Flow Cytometry](#)
- [Cell Culture](#)

E2F3 Antibody - Images

Western blot analysis of E2F3 in human lymph node tissue lysate with E2F3 antibody at 1 µg/ml.



Immunohistochemistry of E2F3 in human lymph node tissue with E2F3 antibody at 5 µg/ml.



Immunofluorescence of E2F3 in human lymph node tissue with E2F3 antibody at 20 µg/ml.

E2F3 Antibody - Background

The E2F transcription factor 3 (E2F3) is a member of a small family of transcription factors that function through binding of DP interaction partner proteins. E2F3 recognizes a specific sequence motif in DNA and interacts directly with the retinoblastoma protein (pRB) to regulate the expression of genes involved in the cell cycle (1). Like the related E2F1 and E2F2, E2F3 is essential for cellular proliferation and progression through the cell cycle (2). Altered copy number and activity of this gene have been observed in a number of human cancers (3).

E2F3 Antibody - References

Lees JA, Saito M, Vidal M, et al. The retinoblastoma protein binds to a family of E2F transcription factors. *Mol. Cell. Biol.* 1993; 13:7813-25.

Wu L, Timmers C, Maiti B, et al. The E2F1-3 transcription factors are essential for cellular proliferation. *Nature* 2001; 414:457-62.

DeGregori J. The genetics of the E2F family of transcription factors: shared functions and unique roles. *Biochim. Biophys. Acta.* 2002; 1602:131-50.