

**MEK1/2 Antibody**  
**Catalog # ASC11934****Specification**

---

**MEK1/2 Antibody - Product Information**

Application	WB, IHC, IF
Primary Accession	<a href="#">Q0VD16</a>
Other Accession	<a href="#">NP_002746</a> , <a href="#">5579478</a>
Reactivity	Human, Mouse, Rat
Host	Rabbit
Clonality	Polyclonal
Isotype	IgG
Calculated MW	Predicted: 43 kDa; Observed: 44 kDa
Application Notes	KDa MEK1/2 antibody can be used for detection of MEK1/2 by Western blot at 1 - 2 µg/ml. Antibody can also be used for immunohistochemistry starting at 5 µg/mL. For immunofluorescence start at 20 µg/mL.

**MEK1/2 Antibody - Additional Information**Gene ID **5604****Target/Specificity**

MAP2K1; MEK1/2 antibody is human, mouse, and rat reactive. This antibody detects both MEK1 and MEK2.

**Reconstitution & Storage**

MEK1/2 antibody can be stored at 4°C for three months and -20°C, stable for up to one year.

**Precautions**

MEK1/2 Antibody is for research use only and not for use in diagnostic or therapeutic procedures.

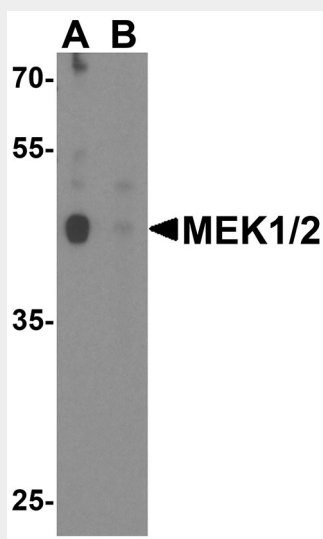
**MEK1/2 Antibody - Protein Information****MEK1/2 Antibody - Protocols**

Provided below are standard protocols that you may find useful for product applications.

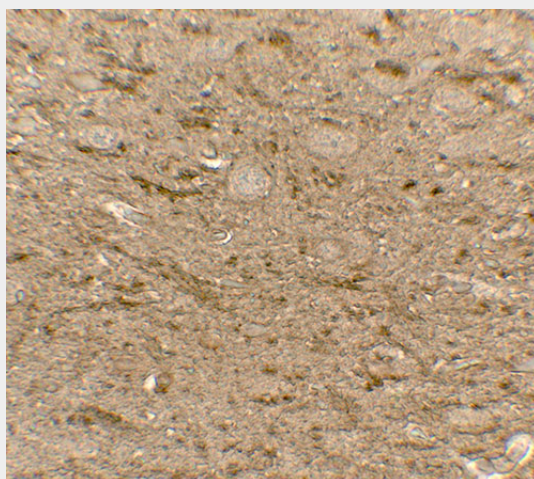
- [Western Blot](#)
- [Blocking Peptides](#)
- [Dot Blot](#)
- [Immunohistochemistry](#)
- [Immunofluorescence](#)
- [Immunoprecipitation](#)
- [Flow Cytometry](#)

- [Cell Culture](#)

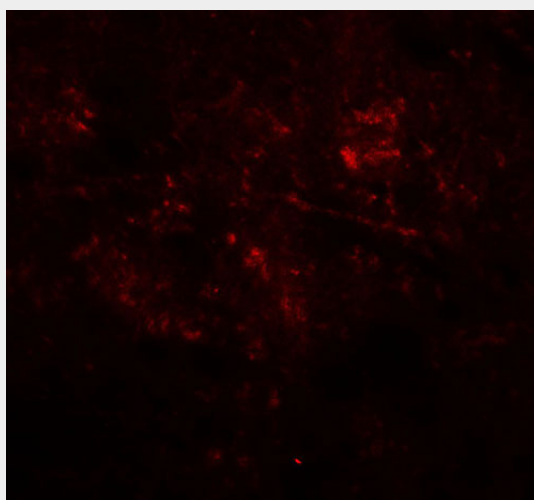
## MEK1/2 Antibody - Images



Western blot analysis of MEK1/2 in human brain tissue lysate with MEK1/2 antibody at 1  $\mu$ g/ml in (A) the absence and (B) the presence of blocking peptide.



Immunohistochemistry of MEK1/2 in mouse brain tissue with MEK1/2 antibody at 5  $\mu$ g/mL.



Immunofluorescence of MEK1/2 in mouse brain tissue with MEK1/2 antibody at 20 µg/mL.

### **MEK1/2 Antibody - Background**

The mitogen-activated protein kinase kinase 1 (MAP2K1, also known as MEK1) and the highly homologous MEK2 are members of the dual specificity protein kinase family (1). MAP kinases, also known as extracellular signal-regulated kinases (ERKs), act as an integration point for multiple biochemical signals (2). MEK1 lies upstream of MAP kinases and stimulates the enzymatic activity of MAP kinases upon wide variety of extra- and intracellular signals. As an essential component of MAP kinase signal transduction pathway, MEK1 is involved in many cellular processes such as proliferation, differentiation, transcription regulation and development (2).

### **MEK1/2 Antibody - References**

Zheng CF and Guan KL. Cloning and characterization of two distinct human extracellular signal-regulated kinase activator kinases, MEK1 and MEK2. J. Biol. Chem. 1993; 268:11435-9.  
Marais R and Marshall CJ. Control of the ERK MAP kinase cascade by Ras and Raf. Cancer Surv. 1996; 27:101-25.