

DEPDC1B Antibody
Catalog # ASC11947**Specification**

DEPDC1B Antibody - Product Information

Application
Primary Accession
Other Accession
Reactivity
Host
Clonality
Isotype
Calculated MW

WB
[Q8WUY9](#)
[NP_060839](#), [223633999](#)
Human
Rabbit
Polyclonal
IgG
Predicted: 58 kDa

Application Notes

Observed: 57 kDa KDa
DEPDC1B antibody can be used for
detection of DEPDC1B by Western blot at 1
- 2 µg/ml.

DEPDC1B Antibody - Additional Information

Gene ID **55789**

Target/Specificity

DEPDC1B; DEPDC1B antibody is human specific. At least two isoforms are known to exist; this antibody will only detect the largest isoform. DEPDC1B antibody is predicted to not cross-react with DEPDC1A.

Reconstitution & Storage

DEPDC1B antibody can be stored at 4°C for three months and -20°C, stable for up to one year.

Precautions

DEPDC1B Antibody is for research use only and not for use in diagnostic or therapeutic procedures.

DEPDC1B Antibody - Protein Information

Name DEPDC1B

Synonyms XTP8

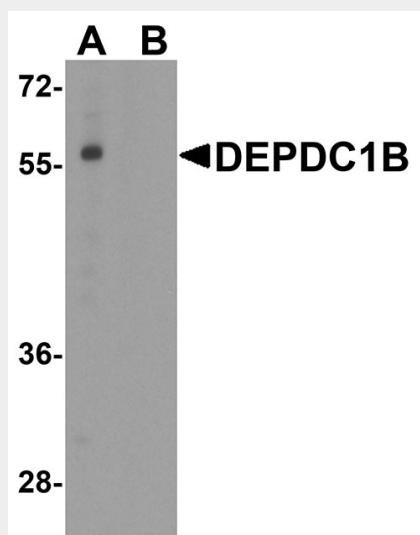
DEPDC1B Antibody - Protocols

Provided below are standard protocols that you may find useful for product applications.

- [Western Blot](#)
- [Blocking Peptides](#)

- [Dot Blot](#)
- [Immunohistochemistry](#)
- [Immunofluorescence](#)
- [Immunoprecipitation](#)
- [Flow Cytometry](#)
- [Cell Culture](#)

DEPDC1B Antibody - Images



Western blot analysis of DEPDC1B in K562 cell lysate with DEPDC1B antibody at 1 µg/ml in (A) the absence and (B) the presence of blocking peptide.

DEPDC1B Antibody - Background

The DEP domain-containing 1B (DEPDC1B) protein was initially identified as a radiation response biomarker in human lymphoblastoid cell lines (1). Like the related protein DEPDC1A, expression of DEPDC1B correlates with a poor prognosis in cancer patients (2,3). Studies have shown that DEPDC1B levels are upregulated in non-small cell lung cancer (NSCLC) and have an inverse correlation with patient survival. Ectopic expression of DEPDC1B in NSCLC activated Wnt/B-catenin signaling and enhanced cell migration and invasion while silencing DEPDC1B expression suppressed these traits (2).

DEPDC1B Antibody - References

Niu N, Qin Y, Fridley BL, et al. Radiation pharmacogenomics: a genome-wide association approach to identify radiation response biomarkers using human lymphoblastoid cell lines. *Genome Res.* 2010; 20:1482-92.

Yang Y, Liu L, Cai J, et al. DEPDC1B enhances migration and invasion of non-small cell lung cancer cells via activating Wnt/B-catenin signaling. *Biochem. Biophys. Res. Commun.* 2014; 450:899-905.

Kassambara A, Schoenhals M, Moreaux J, et al. Inhibition of DEPDC1A, a bad prognostic marker in multiple myeloma, delays growth and induces mature plasma cell markers in malignant plasma cells. *PLoS One* 2013; 8:e62752.