

IQCF2 Antibody
Catalog # ASC11961**Specification**

IQCF2 Antibody - Product Information

| | |
|-------------------|--|
| Application | IHC |
| Primary Accession | Q8IXL9 |
| Other Accession | NP_982248 , 389123 |
| Reactivity | Human |
| Host | Rabbit |
| Clonality | Polyclonal |
| Isotype | IgG |
| Calculated MW | Predicted: 18 kDa |

Application Notes

Observed: 22 kDa KDa
IQCF2 antibody can be used for detection of IQCF2 by Western blot at 0.5 - 1 µg/mL. Antibody can also be used for immunohistochemistry starting at 5 µg/mL.

IQCF2 Antibody - Additional InformationGene ID **389123****Target/Specificity**

IQCF2 antibody was raised against a 19 amino acid peptide near the amino terminus of human IQCF2.

The immunogen is located within the first 50 amino acids of IQCF2.

Reconstitution & Storage

IQCF2 antibody can be stored at 4°C for three months and -20°C, stable for up to one year.

Precautions

IQCF2 Antibody is for research use only and not for use in diagnostic or therapeutic procedures.

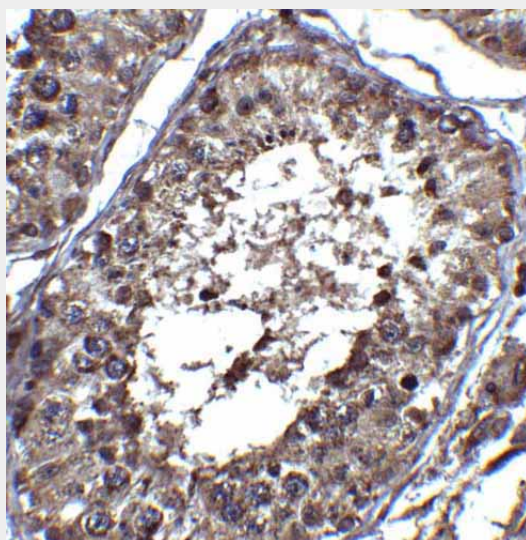
IQCF2 Antibody - Protein Information**Name** IQCF2**IQCF2 Antibody - Protocols**

Provided below are standard protocols that you may find useful for product applications.

- [Western Blot](#)
- [Blocking Peptides](#)
- [Dot Blot](#)
- [Immunohistochemistry](#)

- [Immunofluorescence](#)
- [Immunoprecipitation](#)
- [Flow Cytometry](#)
- [Cell Culture](#)

IQCF2 Antibody - Images



Immunohistochemistry of PIST in human testis tissue with PIST antibody at 2 µg/ml.

IQCF2 Antibody - Background

The IQ motif-containing F2 protein (IQCF2), is homologous to IQCF1, a novel acrosomal protein that is involved in sperm capacitation and the acrosome reaction (1). Little is known of the function of IQCF2.

IQCF2 Antibody - References

Fang P, Xu W, Li D, et al. A novel acrosomal protein, IQCF1, involved in sperm capacitation and the acrosome reaction. *Andrology* 2015; 3:332-44.