

**Chondroadherin Antibody**  
**Catalog # ASC11962****Specification**

---

**Chondroadherin Antibody - Product Information**

Application	WB
Primary Accession	<a href="#">O15335</a>
Other Accession	<a href="#">NP_001258</a> , <a href="#">153251229</a>
Reactivity	Human, Mouse, Rat
Host	Rabbit
Clonality	Polyclonal
Isotype	IgG
Calculated MW	Predicted: 38 kDa
Application Notes	Observed: 36 kDa KDa Chondroadherin antibody can be used for detection of Chondroadherin by Western blot at 1 - 2 µg/ml.

**Chondroadherin Antibody - Additional Information**Gene ID **1101****Target/Specificity**

CHAD; Chondroadherin antibody is human and mouse reactive. Chondroadherin antibody is predicted to not cross-react with CHADL protein.

**Reconstitution & Storage**

Chondroadherin antibody can be stored at 4°C for three months and -20°C, stable for up to one year.

**Precautions**

Chondroadherin Antibody is for research use only and not for use in diagnostic or therapeutic procedures.

**Chondroadherin Antibody - Protein Information****Name** CHAD**Synonyms** SLRR4A**Function**

Promotes attachment of chondrocytes, fibroblasts, and osteoblasts. This binding is mediated (at least for chondrocytes and fibroblasts) by the integrin alpha(2)beta(1). May play an important role in the regulation of chondrocyte growth and proliferation (By similarity).

**Cellular Location**

Secreted, extracellular space, extracellular matrix

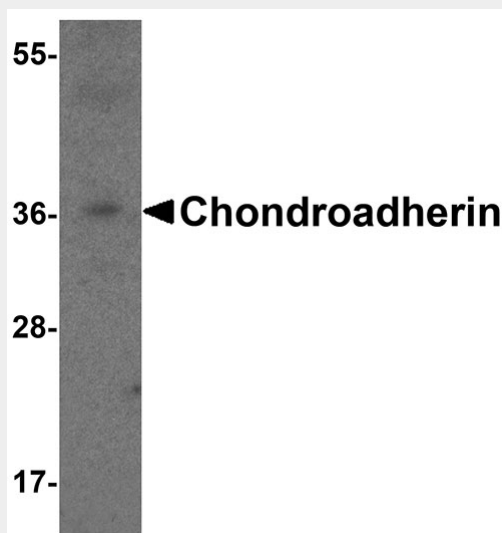
**Tissue Location**

Present in chondrocytes at all ages.

**Chondroadherin Antibody - Protocols**

Provided below are standard protocols that you may find useful for product applications.

- [Western Blot](#)
- [Blocking Peptides](#)
- [Dot Blot](#)
- [Immunohistochemistry](#)
- [Immunofluorescence](#)
- [Immunoprecipitation](#)
- [Flow Cytometry](#)
- [Cell Culture](#)

**Chondroadherin Antibody - Images**

Western blot analysis of Chondroadherin in 3T3 cell lysate with Chondroadherin antibody at 1 µg/ml.

**Chondroadherin Antibody - Background**

Chondroadherin, also known as CHAD or SLRR4A, belongs to the small leucine-rich proteoglycan (SLRP) family and class IV subfamily and plays a significant role in the regulation of chondrocyte growth and proliferation (1,2). It localizes to the extracellular matrix and contains nine tandem leucine repeats as well as N-terminal and C-terminal leucine rich domains (2-4). Chondroadherin is implicated in the adhesion of fibroblasts, osteoblasts and chondrocytes, which is mediated by interactions with Integrin alpha2 beta1 (2,4,5).

**Chondroadherin Antibody - References**

Neame PJ, Sommarin Y, Boynton RE, et al. The structure of a 38-kDa leucine-rich protein (chondroadherin) isolated from bovine cartilage. *J. Biol. Chem.* 1994; 269:21547-54.  
Haglund L, Tillgren V, Addis L, et al. Identification and characterization of the integrin alpha2beta1 binding motif in chondroadherin mediating cell attachment. *J. Biol. Chem.* 2011; 286:3925-34.  
Mansson B, Wenglen C, Morgelin M, et al. Association of chondroadherin with collagen type II. *J.*

Biol. Chem. 2001; 276:32883-8.

Camper L, Heinegard D, and Lundgren-Akerlund E. Integrin  $\alpha 2 \beta 1$  is a receptor for the cartilage matrix protein chondroadherin. J. Cell Biol. 1997; 138:1159-67.