

Anti-Mouse IgG (H&L) (Rhodamine Conjugated) Secondary Antibody
Goat Polyclonal, Rhodamine (TRITC)
Catalog # ASR1009**Specification****Anti-Mouse IgG (H&L) (Rhodamine Conjugated) Secondary Antibody - Product Information**

Description	Anti-MOUSE IgG (H&L) (GOAT) Antibody
Host	Rhodamine Conjugated
Conjugate	Goat
FP Value	Rhodamine (TRITC)
	3.8 moles Rhodamine (TRITC) per mole of IgG
Target Species	Mouse
Reactivity	Mouse
Clonality	Polyclonal
Application	,3,4,
Application Note	FLISA 1:10,000-1:50,000;IF Microscopy 1:1,000-1:5,000;FlowCytometry 1:500-1:2,500
Physical State	Lyophilized
Host Isotype	IgG
Target Isotype	IgG (H&L)
Buffer	0.02 M Potassium Phosphate, 0.15 M Sodium Chloride, pH 7.2
Immunogen	Mouse IgG whole molecule
Reconstitution Volume	500 µL
Reconstitution Buffer	Restore with deionized water (or equivalent)
Stabilizer	10 mg/mL Bovine Serum Albumin (BSA) - Immunoglobulin and Protease free
Preservative	0.1% (w/v) Sodium Azide

Anti-Mouse IgG (H&L) (Rhodamine Conjugated) Secondary Antibody - Additional Information**Shipping Condition**

Ambient

Purity

This product was prepared from monospecific antiserum by immunoaffinity chromatography using Mouse IgG coupled to agarose beads. Assay by immunoelectrophoresis resulted in a single precipitin arc against anti-Goat Serum, Mouse IgG and Mouse Serum.

Storage Condition

Store vial at 4° C prior to restoration. For extended storage aliquot contents and freeze at -20° C or below. Avoid cycles of freezing and thawing. Centrifuge product if not completely clear after standing at room temperature. This product is stable for several weeks at 4° C as an undiluted liquid. Dilute only prior to immediate use.

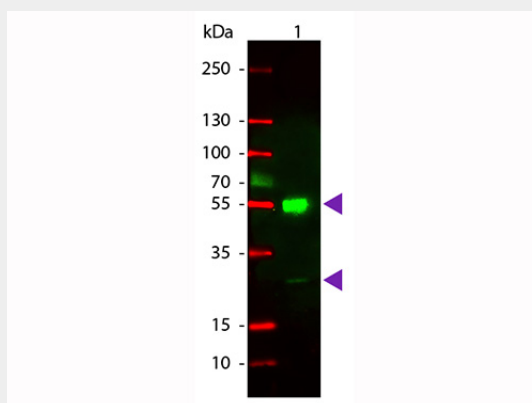
Precautions Note

This product is for research use only and is not intended for therapeutic or diagnostic applications.

Anti-Mouse IgG (H&L) (Rhodamine Conjugated) Secondary Antibody - Protein Information**Anti-Mouse IgG (H&L) (Rhodamine Conjugated) Secondary Antibody - Protocols**

Provided below are standard protocols that you may find useful for product applications.

- [Western Blot](#)
- [Blocking Peptides](#)
- [Dot Blot](#)
- [Immunohistochemistry](#)
- [Immunofluorescence](#)
- [Immunoprecipitation](#)
- [Flow Cytometry](#)
- [Cell Culture](#)

Anti-Mouse IgG (H&L) (Rhodamine Conjugated) Secondary Antibody - Images

Western Blot of Rhodamine Conjugated Goat anti-Mouse IgG Secondary Antibody. Lane 1: Mouse IgG. Lane 2: none. Load: 50 ng per lane. Primary antibody: none. Secondary antibody: Rhodamine goat secondary antibody at 1:1,000 for 60 min at RT. Block: MB-070 for 30 min at RT. Predicted/Observed size: 25 & 55 kDa, 25 & 55 kDa for Goat IgG. Other band(s): none.



Dot Blot of Rhodamine Conjugated Goat-a-Mouse IgG. Antigen: Mouse IgG. Load: Lane 1 - 50ng Lane 2 - 16.67ng Lane 3 - 5.56ng Lane 4 - 1.85ng Lane 5 - 0.62ng Primary antibody: none Secondary antibody: Rhodamine Conjugated Goat-a-Mouse IgG secondary antibody at 1:1,000 for 60 min at RT. Block: MB-070 for 60 min at RT.