

Anti-RABBIT IgG (H&L) Secondary Antibody
Goat Polyclonal, Unconjugated
Catalog # ASR1087**Specification****Anti-RABBIT IgG (H&L) Secondary Antibody - Product Information**

Description	Anti-RABBIT IgG (H&L) (GOAT) Antibody
Host	Goat
Conjugate	Unconjugated
Target Species	Rabbit
Reactivity	Rabbit
Clonality	Polyclonal
Application	,1,3,5,10,15,
Application Note	ELISA 1:10,000-1:60,000;IF Microscopy
	Yes;Western Blot
	1:1,000-1:5,000;Immunochemistry
	1:500-1:2,500ImmunoPrecipitation:Yes
	Liquid (sterile filtered)
Physical State	IgG
Host Isotype	IgG (H&L)
Target Isotype	0.02 M Potassium Phosphate, 0.15 M
Buffer	Sodium Chloride, pH 7.2
Immunogen	Anti-Rabbit IgG (H&L) was produced by
	repeated immunization with rabbit whole
	IgG molecule in goat.
Preservative	0.01% (w/v) Sodium Azide

Anti-RABBIT IgG (H&L) Secondary Antibody - Additional Information**Shipping Condition**

Wet Ice

Purity

Rabbit Secondary Antibody was prepared from monospecific antiserum by immunoaffinity chromatography using Rabbit IgG coupled to agarose beads. Assay by immunoelectrophoresis resulted in a single precipitin arc against anti-Goat Serum, Rabbit IgG and Rabbit Serum.

Storage Condition

Store Rabbit Secondary Antibody at 4° C prior to opening. This product is stable for several weeks at 4° C as an undiluted liquid. Dilute only prior to immediate use. For extended storage aliquot contents and freeze at -20° C or below. Avoid cycles of freezing and thawing.

Precautions Note

This product is for research use only and is not intended for therapeutic or diagnostic applications.

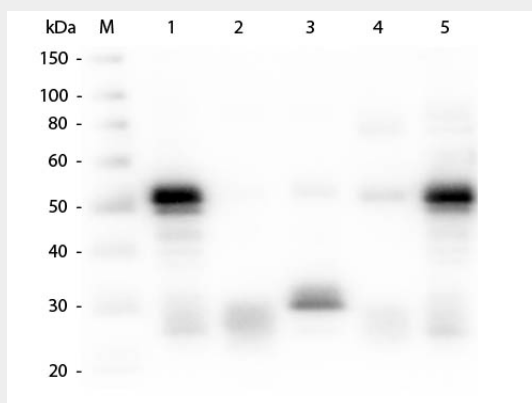
Anti-RABBIT IgG (H&L) Secondary Antibody - Protein Information

Anti-RABBIT IgG (H&L) Secondary Antibody - Protocols

Provided below are standard protocols that you may find useful for product applications.

- [Western Blot](#)
- [Blocking Peptides](#)
- [Dot Blot](#)
- [Immunohistochemistry](#)
- [Immunofluorescence](#)
- [Immunoprecipitation](#)
- [Flow Cytometry](#)
- [Cell Culture](#)

Anti-RABBIT IgG (H&L) Secondary Antibody - Images



Western Blot of Anti-Rabbit IgG (H&L) (GOAT) Antibody . Lane M: 3 μ l Molecular Ladder. Lane 1: Rabbit IgG whole molecule . Lane 2: Rabbit IgG F(ab) Fragment . Lane 3: Rabbit IgG F(c) Fragment . Lane 4: Rabbit IgM Whole Molecule . Lane 5: Normal Rabbit Serum . All samples were reduced. Load: 50 ng per lane. Block: MB-070 for 30 min at RT. Primary Antibody: Anti-Rabbit IgG (H&L) (GOAT) Antibody 1:1,000 for 60 min at RT. Secondary antibody: Anti-Goat IgG (DONKEY) Peroxidase Conjugated Antibody 1:40,000 in MB-070 for 30 min at RT. Predicted/Observed Size: 25 and 50 kDa for Rabbit IgG and Serum, 25 kDa for F(c) and F(ab), 70 and 23 kDa for IgM. Rabbit F(c) migrates slightly higher.

Anti-RABBIT IgG (H&L) Secondary Antibody - Background

Anti-Rabbit IgG (H&L) secondary antibody generated in goat detects specifically rabbit IgG. This secondary antibody anti-Rabbit is ideal for investigators who routinely perform ELISA, Sandwich ELISA, titration assays, western-blot, immunoprecipitation and more generally immunoassays.