

**Mouse IgG3 isotype control Fluorescein**  
**Monoclonal MG3 IgG3 , Fluorescein (FITC)**  
**Catalog # ASR1112****Specification**

---

**Mouse IgG3 isotype control Fluorescein - Product Information**

Description	<b>MOUSE IgG3 isotype control Fluorescein conjugated</b>
Conjugate	<b>Fluorescein (FITC)</b>
FP Value	<b>3.3 moles Fluorescein (FITC) per mole of Mouse IgG3</b>
Clonality	<b>Monoclonal</b>
Application	<b>,4,</b>
Application Note	<b>FlowCytometry 1:1000-1:5000</b>
Physical State	<b>Lyophilized</b>
Host Isotype	<b>IgG3</b>
Buffer	<b>0.02 M Potassium Phosphate, 0.15 M Sodium Chloride, pH 7.2</b>
Species of Origin	<b>Mouse</b>
Reconstitution Volume	<b>100 µL</b>
Reconstitution Buffer	<b>Restore with deionized water (or equivalent)</b>
Stabilizer	<b>10 mg/mL Bovine Serum Albumin (BSA) - Immunoglobulin and Protease free</b>
Preservative	<b>0.01% (w/v) Sodium Azide</b>

**Mouse IgG3 isotype control Fluorescein - Additional Information****Shipping Condition**

Ambient

**Purity**

This product has been prepared from serum-free tissue culture supernate by protein A chromatography. Typically less than 1% cross reactivity against other mouse heavy or light chain specific antibodies was detected by ELISA.

**Storage Condition**

Store vial at 4° C prior to restoration. For extended storage aliquot contents and freeze at -20° C or below. Avoid cycles of freezing and thawing. Centrifuge product if not completely clear after standing at room temperature. This product is stable for several weeks at 4° C as an undiluted liquid. Dilute only prior to immediate use.

**Precautions Note**

This product is for research use only and is not intended for therapeutic or diagnostic applications.

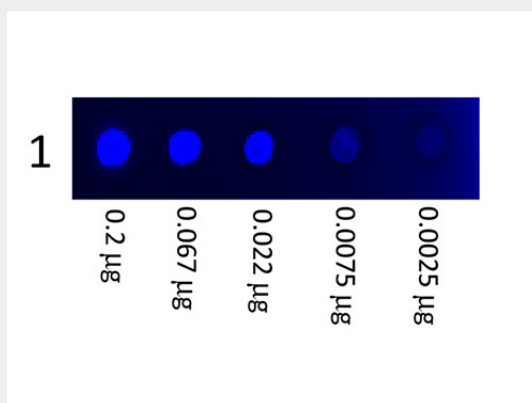
**Mouse IgG3 isotype control Fluorescein - Protein Information**

## Mouse IgG3 isotype control Fluorescein - Protocols

Provided below are standard protocols that you may find useful for product applications.

- [Western Blot](#)
- [Blocking Peptides](#)
- [Dot Blot](#)
- [Immunohistochemistry](#)
- [Immunofluorescence](#)
- [Immunoprecipitation](#)
- [Flow Cytometry](#)
- [Cell Culture](#)

## Mouse IgG3 isotype control Fluorescein - Images



Dot Blot showing the detection Fluorescein conjugated Mouse IgG3 subclass. A three-fold serial dilution of Fluorescein conjugated Mouse IgG3 subclass starting at 200ng was spotted onto 0.45 µm nitrocellulose and imaged using the Bio-Rad VersaDoc® 4000 MP.

## Mouse IgG3 isotype control Fluorescein - Background

Isotype controls are important for Flow Cytometry and have no specificity for target cells within a particular experiment. Their purpose is to confirm the specificity of primary antibody binding that it is not a result of non-specific Fc receptor binding to cells or other cellular protein interactions. Isotype controls need to be matched to the specific primary Abs (species and isotype, including heavy and light chains) being used.