

Anti-Rabbit IgG (H&L) Secondary Antibody
Donkey Polyclonal, Unconjugated
Catalog # ASR1122**Specification**

Anti-Rabbit IgG (H&L) Secondary Antibody - Product Information

Description	Anti-RABBIT IgG (H&L) (DONKEY) Antibody
Host	Donkey
Conjugate	Unconjugated
Target Species	Rabbit
Clonality	Polyclonal
Application	,1,10,15,
Application Note	ELISA 1:40,000-1:160,000;Western Blot 1:2,000-1:10,000;Immunochemistry 1:1,000-1:5,000
Physical State	Liquid (sterile filtered)
Host Isotype	IgG
Target Isotype	IgG (H&L)
Buffer	0.02 M Potassium Phosphate, 0.15 M Sodium Chloride, pH 7.2
Immunogen	Rabbit IgG whole molecule
Stabilizer	None
Preservative	0.01% (w/v) Sodium Azide

Anti-Rabbit IgG (H&L) Secondary Antibody - Additional Information**Shipping Condition**

Wet Ice

Purity

This product was prepared from monospecific antiserum by immunoaffinity chromatography using Rabbit IgG coupled to agarose beads followed by solid phase adsorption(s) to remove any unwanted reactivities. Assay by immunoelectrophoresis resulted in a single precipitin arc against anti-Donkey Serum, Rabbit IgG and Rabbit Serum.

Storage Condition

Store vial at 4° C prior to opening. This product is stable for several weeks at 4° C as an undiluted liquid. Dilute only prior to immediate use. For extended storage aliquot contents and freeze at -20° C or below. Avoid cycles of freezing and thawing.

Precautions Note

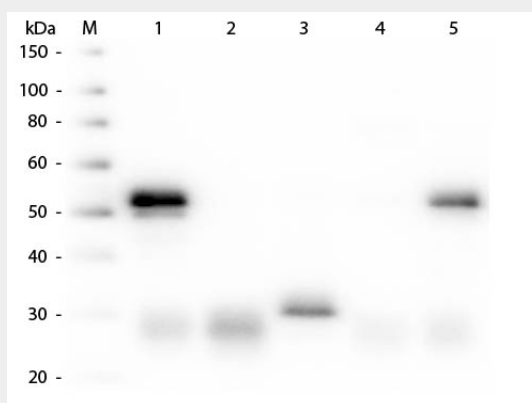
This product is for research use only and is not intended for therapeutic or diagnostic applications.

Anti-Rabbit IgG (H&L) Secondary Antibody - Protein Information**Anti-Rabbit IgG (H&L) Secondary Antibody - Protocols**

Provided below are standard protocols that you may find useful for product applications.

- [Western Blot](#)
- [Blocking Peptides](#)
- [Dot Blot](#)
- [Immunohistochemistry](#)
- [Immunofluorescence](#)
- [Immunoprecipitation](#)
- [Flow Cytometry](#)
- [Cell Culture](#)

Anti-Rabbit IgG (H&L) Secondary Antibody - Images



Western Blot of Anti-Rabbit IgG (H&L) (DONKEY) Antibody Peroxidase Conjugated . Lane M: 3 μ l Molecular Ladder. Lane 1: Rabbit IgG whole molecule . Lane 2: Rabbit IgG F(ab) Fragment . Lane 3: Rabbit IgG F(c) Fragment . Lane 4: Rabbit IgM Whole Molecule . Lane 5: Normal Rabbit Serum . All samples were reduced. Load: 50 ng per lane. Block: MB-070 for 30 min at RT. Primary Antibody: Anti-Rabbit IgG (H&L) (DONKEY) Antibody Peroxidase Conjugated 1:5,000 for 60 min at RT. Secondary antibody: None. Predicted/Obsevered Size: 25 and 50 kDa for Rabbit IgG and Serum, 25 kDa for F(c) and F(ab), 70 and 23 kDa for IgM. Rabbit F(c) migrates slightly higher.