

Goat IgG F(ab')₂ Rhodamine
Catalog # ASR1185**Specification**

Goat IgG F(ab')₂ Rhodamine - Product Information

Description	GOAT IgG F(ab')₂ fragment Rhodamine conjugated
Conjugate	Rhodamine (TRITC)
FP Value	4.4 moles Rhodamine (TRITC) per mole of Goat IgG F(ab')₂
Physical State	Lyophilized
Host Isotype	IgG F(ab')₂
Buffer	0.02 M Potassium Phosphate, 0.15 M Sodium Chloride, pH 7.2
Species of Origin	Goat
Reconstitution Volume	1.0 mL
Reconstitution Buffer	Restore with deionized water (or equivalent)
Stabilizer	10 mg/mL Bovine Serum Albumin (BSA) - Immunoglobulin and Protease free
Preservative	0.01% (w/v) Sodium Azide

Goat IgG F(ab')₂ Rhodamine - Additional Information**Shipping Condition**

Ambient

Purity

This product was prepared from normal serum by delipidation, salt fractionation, ion exchange chromatography followed by pepsin digestion and extensive dialysis against the buffer stated above. Assay by immunoelectrophoresis resulted in a single precipitin arc against anti-Goat IgG, anti-Goat IgG F(ab')₂ and anti-Goat Serum. No reaction was observed against anti-Goat IgG F(c) or anti-Pepsin.

Storage Condition

Store vial at 4° C prior to restoration. For extended storage aliquot contents and freeze at -20° C or below. Avoid cycles of freezing and thawing. Centrifuge product if not completely clear after standing at room temperature. This product is stable for several weeks at 4° C as an undiluted liquid. Dilute only prior to immediate use.

Precautions Note

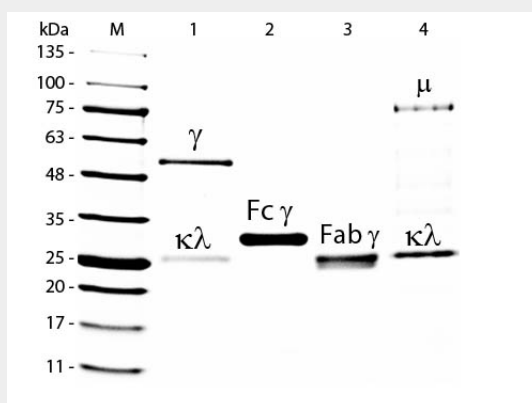
This product is for research use only and is not intended for therapeutic or diagnostic applications.

Goat IgG F(ab')₂ Rhodamine - Protein Information**Goat IgG F(ab')₂ Rhodamine - Protocols**

Provided below are standard protocols that you may find useful for product applications.

- [Western Blot](#)
- [Blocking Peptides](#)
- [Dot Blot](#)
- [Immunohistochemistry](#)
- [Immunofluorescence](#)
- [Immunoprecipitation](#)
- [Flow Cytometry](#)
- [Cell Culture](#)

Goat IgG F(ab')₂ Rhodamine - Images



SDS-PAGE of Goat IgG F(ab')₂ Rhodamine Conjugated . Lane M: 5 μ L Opal Prestained Marker . Lane 1: Reduced Goat IgG Whole Molecule . Lane 2: Reduced Goat IgG F(c) Fragment . Lane 3: Reduced Goat IgG F(ab')₂ Fragment Rhodamine Conjugated . Lane 4: Reduced Goat IgM Whole Molecule . Load: 1 μ g for IgG, F(c) and F(ab')₂; 3 μ g for IgM. Predicted/Observed size: IgG at 50 and 25 kDa; F(c) at 25 kDa; F(ab) at 25 kDa; IgM at 70 and 23 kDa. Observed F(c) Fragment migrates slightly higher.

Goat IgG F(ab')₂ Rhodamine - Background

This product is designed for immunofluorescence microscopy, fluorescence based plate assays (FLISA) and fluorescent western blotting. This product is also suitable for multiplex analysis, including multicolor imaging, utilizing various commercial platforms.