

**Mouse IgG Fluorescein**  
**Catalog # ASR1206****Specification**

---

**Mouse IgG Fluorescein - Product Information**

Description	<b>MOUSE IgG whole molecule Fluorescein conjugated</b>
Conjugate	<b>Fluorescein (FITC)</b>
FP Value	<b>3.2 moles Fluorescein (FITC) per mole of Mouse IgG</b>
Physical State	<b>Lyophilized</b>
Host Isotype	<b>IgG</b>
Buffer	<b>0.02 M Potassium Phosphate, 0.15 M Sodium Chloride, pH 7.2</b>
Species of Origin	<b>Mouse</b>
Reconstitution Volume	<b>1.0 mL</b>
Reconstitution Buffer	<b>Restore with deionized water (or equivalent)</b>
Stabilizer	<b>10 mg/mL Bovine Serum Albumin (BSA) - Immunoglobulin and Protease free</b>
Preservative	<b>0.01% (w/v) Sodium Azide</b>

**Mouse IgG Fluorescein - Additional Information****Shipping Condition**

Ambient

**Purity**

This product was prepared from normal serum by delipidation, salt fractionation and ion change chromatography followed by extensive dialysis against the buffer stated above. Assay by immunoelectrophoresis resulted in a single precipitin arc against anti-Fluorescein, anti-Mouse IgG and anti-Mouse Serum.

**Storage Condition**

Store vial at 4° C prior to restoration. For extended storage aliquot contents and freeze at -20° C or below. Avoid cycles of freezing and thawing. Centrifuge product if not completely clear after standing at room temperature. This product is stable for several weeks at 4° C as an undiluted liquid. Dilute only prior to immediate use.

**Precautions Note**

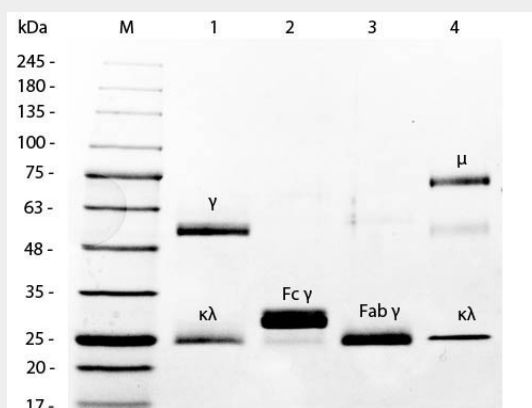
This product is for research use only and is not intended for therapeutic or diagnostic applications.

**Mouse IgG Fluorescein - Protein Information****Mouse IgG Fluorescein - Protocols**

Provided below are standard protocols that you may find useful for product applications.

- [Western Blot](#)
- [Blocking Peptides](#)
- [Dot Blot](#)
- [Immunohistochemistry](#)
- [Immunofluorescence](#)
- [Immunoprecipitation](#)
- [Flow Cytometry](#)
- [Cell Culture](#)

### Mouse IgG Fluorescein - Images



SDS-PAGE of Mouse IgG Whole Molecule Fluorescein Conjugated . Lane 1: 5  $\mu$ L Opal Prestained Marker . Lane 2: Reduced Mouse IgG Whole Molecule Fluorescein Conjugated . Lane 3: Reduced Mouse F(c) Fragment . Lane 4: Reduced Mouse F(ab) Fragment . Lane 5: Mouse IgM Kappa Myeloma Protein . Load: 1  $\mu$ g per lane. Predicted/Observed size: IgG at 50 and 25 kDa; F(c) at 25 kDa; F(ab) at 25 kDa; IgM K at 70 and 23 kDa. Observed F(c) Fragment migrates slightly higher.

### Mouse IgG Fluorescein - Background

This product is designed for immunofluorescence microscopy, fluorescence based plate assays (FLISA) and fluorescent western blotting. This product is also suitable for multiplex analysis, including multicolor imaging, utilizing various commercial platforms.