

**Anti-Chicken IgG (H&L) Pre-Adsorbed Secondary Antibody**  
**Donkey Polyclonal, Unconjugated**  
**Catalog # ASR1224****Specification****Anti-Chicken IgG (H&L) Pre-Adsorbed Secondary Antibody - Product Information**

Description	<b>Anti-CHICKEN IgG (H&amp;L) (DONKEY)</b> <b>Antibody (Min X Bv Gt GP Ham Hs Hu Ms</b> <b>Rb Rt &amp; Sh Serum Proteins)</b>
Host	<b>Donkey</b>
Conjugate	<b>Unconjugated</b>
Target Species	<b>Chicken</b>
Reactivity	<b>Chicken</b>
Clonality	<b>Polyclonal</b>
Application	<b>,1,10,15,</b>
Application Note	<b>ELISA 1:20,000-1:100,000;Western Blot</b> <b>1:2,000-1:10,000;Immunochemistry</b> <b>1:1,000-1:5,000</b>
Physical State	<b>Liquid (sterile filtered)</b>
Host Isotype	<b>IgG</b>
Target Isotype	<b>IgG (H&amp;L)</b>
Buffer	<b>0.02 M Potassium Phosphate, 0.15 M</b> <b>Sodium Chloride, pH 7.2</b>
Immunogen	<b>Anti-Chicken IgY (H&amp;L) was produced by</b> <b>repeated immunization with Chicken IgY</b> <b>whole molecule in donkey.</b>
Stabilizer	<b>None</b>
Preservative	<b>None</b>

**Anti-Chicken IgG (H&L) Pre-Adsorbed Secondary Antibody - Additional Information****Shipping Condition**

Dry Ice

**Purity**

Anti-Chicken IgY was prepared from monospecific antiserum by immunoaffinity chromatography using Chicken IgG coupled to agarose beads followed by conjugation to fluorochrome and extensive dialysis against the buffer stated above. Assay by immunoelectrophoresis resulted in a single precipitin arc against anti-Donkey Serum, Chicken IgY and Chicken Serum. No reaction was observed against Bovine, Goat, Guinea Pig, Hamster, Horse, Human, Mouse, Rabbit, Rat and Sheep Serum Proteins. This antibody will react with heavy chains of Chicken IgG and with light chains of most Chicken immunoglobulins.

**Storage Condition**

Store vial at -20° C prior to opening. Aliquot contents and freeze at -20° C or below for extended storage. Avoid cycles of freezing and thawing. Centrifuge product if not completely clear after standing at room temperature. This product is stable for several weeks at 4° C as an undiluted liquid. Dilute only prior to immediate use.

**Precautions Note**

This product is for research use only and is not intended for therapeutic or diagnostic applications.

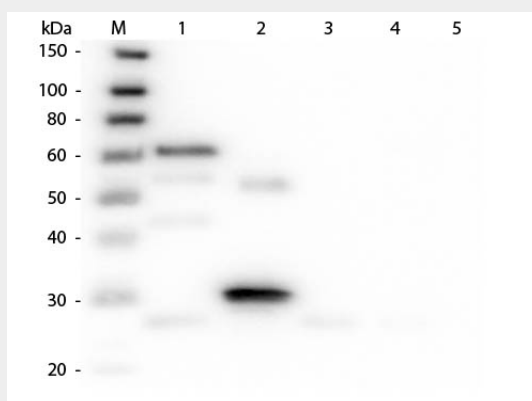
### **Anti-Chicken IgG (H&L) Pre-Adsorbed Secondary Antibody - Protein Information**

### **Anti-Chicken IgG (H&L) Pre-Adsorbed Secondary Antibody - Protocols**

Provided below are standard protocols that you may find useful for product applications.

- [Western Blot](#)
- [Blocking Peptides](#)
- [Dot Blot](#)
- [Immunohistochemistry](#)
- [Immunofluorescence](#)
- [Immunoprecipitation](#)
- [Flow Cytometry](#)
- [Cell Culture](#)

### **Anti-Chicken IgG (H&L) Pre-Adsorbed Secondary Antibody - Images**



Western Blot of Anti-Chicken IgG (H&L) (DONKEY) Antibody (Min X Bv Gt GP Ham Hs Hu Ms Rb Rt & Sh Serum Proteins) . Lane M: 3  $\mu$ l Molecular Ladder. Lane 1: Chicken IgG whole molecule . Lane 2: Chicken IgG F(c) Fragment . Lane 3: Chicken IgG F(ab) Fragment . Lane 4: Chicken IgM Whole Molecule . Lane 5: Chicken Serum . All samples were reduced. Load: 50 ng per lane. Block: MB-070 for 30 min at RT. Primary Antibody: Anti-Chicken IgG (H&L) (DONKEY) Antibody (Min X Bv Gt GP Ham Hs Hu Ms Rb Rt & Sh Serum Proteins) 1:3,000 for 60 min at RT. Secondary antibody: Anti-Donkey IgG (GOAT) Peroxidase Conjugated Antibody 1:40,000 in MB-070 for 30 min at RT. Predicted/Observed Size: 25 and 72 kDa for Chicken IgG and Serum, 25 kDa for F(c) and F(ab), 75 kDa for IgM. Chicken F(c) migrates slightly higher.

### **Anti-Chicken IgG (H&L) Pre-Adsorbed Secondary Antibody - Background**

Chicken IgY antibody generated in donkey detects specifically chicken IgG. This anti-Chicken secondary antibody is ideal for investigators who routinely perform ELISA, Sandwich ELISA, titration assays, western-blot, immunoprecipitation and more generally immunoassays.