

Anti-GOAT IgG (H&L) Secondary Antibody
Rabbit Polyclonal, Unconjugated
Catalog # ASR1227**Specification**

Anti-GOAT IgG (H&L) Secondary Antibody - Product Information

Description	Anti-GOAT IgG (H&L) (RABBIT) Antibody
Host	Rabbit
Conjugate	Unconjugated
Target Species	Goat
Clonality	Polyclonal
Application	,1,10,15,
Application Note	ELISA 1:800,000;Western Blot
	1:10,000-1:60,000;Immunochemistry
	1:1,000-1:5,000
Physical State	Liquid (sterile filtered)
Host Isotype	IgG
Target Isotype	IgG (H&L)
Buffer	0.02 M Potassium Phosphate, 0.15 M
	Sodium Chloride, pH 7.2
Immunogen	Goat IgG whole molecule
Stabilizer	None
Preservative	0.01% (w/v) Sodium Azide

Anti-GOAT IgG (H&L) Secondary Antibody - Additional Information**Shipping Condition**

Wet Ice

Purity

Secondary Antibody was prepared from monospecific antiserum by immunoaffinity chromatography using Goat IgG coupled to agarose beads. Assay by immunoelectrophoresis resulted in a single precipitin arc against anti-Rabbit Serum, Goat IgG and Goat Serum.

Storage Condition

Store vial at 4° C prior to opening. This product is stable for several weeks at 4° C as an undiluted liquid. Dilute only prior to immediate use. For extended storage aliquot contents and freeze at -20° C or below. Avoid cycles of freezing and thawing.

Precautions Note

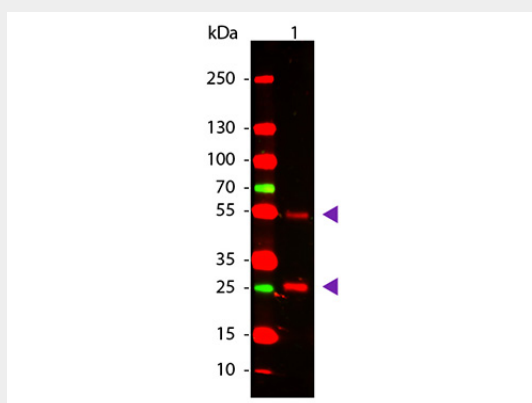
This product is for research use only and is not intended for therapeutic or diagnostic applications.

Anti-GOAT IgG (H&L) Secondary Antibody - Protein Information**Anti-GOAT IgG (H&L) Secondary Antibody - Protocols**

Provided below are standard protocols that you may find useful for product applications.

- [Western Blot](#)
- [Blocking Peptides](#)
- [Dot Blot](#)
- [Immunohistochemistry](#)
- [Immunofluorescence](#)
- [Immunoprecipitation](#)
- [Flow Cytometry](#)
- [Cell Culture](#)

Anti-GOAT IgG (H&L) Secondary Antibody - Images



Western Blot of Rabbit anti-Goat IgG Antibody. Lane 1: Goat IgG. Lane 2: None. Load: 50 ng per lane. Primary antibody: Goat antibody at 1,000 overnight at 4°C. Secondary antibody: DyLight™ 649 rabbit secondary antibody at 1:20,000 for 30 min at RT. Block: MB-070 for 30 min at RT. Predicted/Observed size: 28 & 55 kDa, 28 & 55 kDa for Goat IgG. Other band(s): None

Anti-GOAT IgG (H&L) Secondary Antibody - Background

Secondary Antibodies are available in a variety of formats and conjugate types. When choosing a secondary antibody product, consideration must be given to species and immunoglobulin specificity, conjugate type, fragment and chain specificity, level of cross-reactivity, and host-species source and fragment composition.