

Rat IgG Fab Biotin
Catalog # ASR1506**Specification**

Rat IgG Fab Biotin - Product Information

Description	RAT IgG F(ab) fragment Biotin conjugated
Conjugate	Biotin
Physical State	Lyophilized
Host Isotype	IgG F(ab)
Buffer	0.02 M Potassium Phosphate, 0.15 M Sodium Chloride, pH 7.2
Species of Origin	Rat
Reconstitution Volume	1.0 mL
Reconstitution Buffer	Restore with deionized water (or equivalent)
Stabilizer	10 mg/mL Bovine Serum Albumin (BSA) - Immunoglobulin and Protease free
Preservative	0.01% (w/v) Sodium Azide

Rat IgG Fab Biotin - Additional Information**Shipping Condition**

Ambient

Purity

This product was prepared from normal serum delipidation, salt fractionation, ion exchange chromatography followed by pepsin digestion and extensive dialysis against the buffer stated above. Assay by immunoelectrophoresis resulted in a single precipitin arc against anti-biotin, anti-Rat IgG, anti-Rat IgG F(ab')₂ and anti-Rat Serum. No reaction was observed against anti-Rat IgG F(c) or anti-Pepsin.

Storage Condition

Store vial at 4° C prior to restoration. For extended storage aliquot contents and freeze at -20° C or below. Avoid cycles of freezing and thawing. Centrifuge product if not completely clear after standing at room temperature. This product is stable for several weeks at 4° C as an undiluted liquid. Dilute only prior to immediate use.

Precautions Note

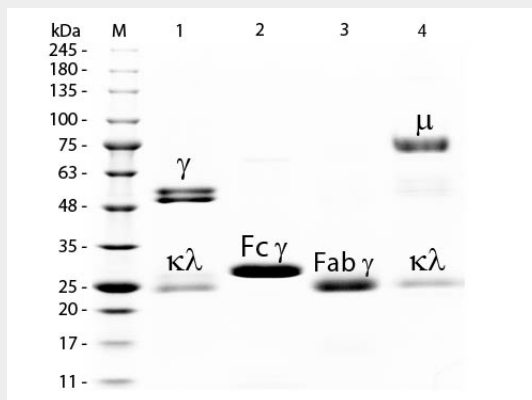
This product is for research use only and is not intended for therapeutic or diagnostic applications.

Rat IgG Fab Biotin - Protein Information**Rat IgG Fab Biotin - Protocols**

Provided below are standard protocols that you may find useful for product applications.

- [Western Blot](#)
- [Blocking Peptides](#)
- [Dot Blot](#)
- [Immunohistochemistry](#)
- [Immunofluorescence](#)
- [Immunoprecipitation](#)
- [Flow Cytometry](#)
- [Cell Culture](#)

Rat IgG Fab Biotin - Images



SDS-PAGE of Rat IgG F(ab) Fragment Biotin Conjugated . Lane M: 3 μ L Opal Prestained Marker . Lane 1: Reduced Rat IgG Whole Molecule . Lane 2: Reduced Rat IgG F(c) Fragment . Lane 3: Reduced Rat IgG F(ab) Fragment Biotin Conjugated . Lane 4: Reduced Rat IgM Whole Molecule . Load: 1 μ g of IgG, F(c), F(ab); 1.5 μ g of IgM. Predicted/Observed size: IgG at 55 and 25 kDa; F(c) at 25 kDa; F(ab) at 25 kDa; IgM at 78 and 25 kDa. Observed F(c) Fragment migrates slightly higher.