

**Anti-CHICKEN IgG (H&L) (Fluorescein Conjugated) Secondary Antibody**  
**Rabbit Polyclonal, Fluorescein (FITC)**  
**Catalog # ASR1556****Specification****Anti-CHICKEN IgG (H&L) (Fluorescein Conjugated) Secondary Antibody - Product Information**

Description	<b>Anti-CHICKEN IgG (H&amp;L) (RABBIT) Antibody</b>
Host	<b>Fluorescein Conjugated</b>
Conjugate	<b>Rabbit</b>
FP Value	<b>Fluorescein (FITC)</b>
Target Species	<b>3.0 moles Fluorescein (FITC) per mole of</b>
Clonality	<b>IgG</b>
Application	<b>Chicken</b>
Application Note	<b>Polyclonal</b>
	<b>,3,4,</b>
	<b>FLISA 1:10,000-1:50,000;IF Microscopy</b>
	<b>1:1,000-1:5,000;FlowCytometry</b>
	<b>1:500-1:2,500</b>
Physical State	<b>Lyophilized</b>
Host Isotype	<b>IgG</b>
Target Isotype	<b>IgG (H&amp;L)</b>
Buffer	<b>0.02 M Potassium Phosphate, 0.15 M</b>
	<b>Sodium Chloride, pH 7.2</b>
Immunogen	<b>Chicken IgG whole molecule</b>
Reconstitution Volume	<b>1.0 mL</b>
Reconstitution Buffer	<b>Restore with deionized water (or</b>
	<b>equivalent)</b>
Stabilizer	<b>10 mg/mL Bovine Serum Albumin (BSA) -</b>
	<b>Immunoglobulin and Protease free</b>
Preservative	<b>0.01% (w/v) Sodium Azide</b>

**Anti-CHICKEN IgG (H&L) (Fluorescein Conjugated) Secondary Antibody - Additional Information****Shipping Condition**

Ambient

**Purity**

Anti-Chicken IgG/IgY Secondary Antibody was prepared from monospecific antiserum by immunoaffinity chromatography using Chicken IgG coupled to agarose beads. Assay by immunoelectrophoresis resulted in a single precipitin arc against anti-Rabbit Serum and Chicken IgG. Some light chain cross reactivity may be observed against chicken immunoglobulins.

**Storage Condition**

Store Secondary Antibody at 4° C prior to restoration. For extended storage aliquot antibody and freeze at -20° C or below. Avoid cycles of freezing and thawing. Centrifuge product if not completely clear after standing at room temperature. This product is stable for several weeks at 4° C as an undiluted liquid. Dilute only prior to immediate use.

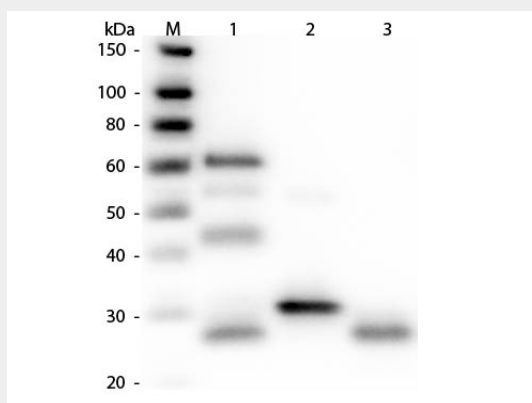
**Precautions Note**

This product is for research use only and is not intended for therapeutic or diagnostic applications.

**Anti-CHICKEN IgG (H&L) (Fluorescein Conjugated) Secondary Antibody - Protein Information****Anti-CHICKEN IgG (H&L) (Fluorescein Conjugated) Secondary Antibody - Protocols**

Provided below are standard protocols that you may find useful for product applications.

- [Western Blot](#)
- [Blocking Peptides](#)
- [Dot Blot](#)
- [Immunohistochemistry](#)
- [Immunofluorescence](#)
- [Immunoprecipitation](#)
- [Flow Cytometry](#)
- [Cell Culture](#)

**Anti-CHICKEN IgG (H&L) (Fluorescein Conjugated) Secondary Antibody - Images**

Western Blot of Anti-Chicken IgG (H&L) (RABBIT) Antibody . Lane M: 3  $\mu$ l Molecular Ladder. Lane 1: Chicken IgG whole molecule . Lane 2: Chicken IgG F(c) Fragment . Lane 3: Chicken IgG F(ab) Fragment . All samples were reduced. Load: 50 ng per lane. Block: MB-070 for 30 min at RT. Primary Antibody: Anti-Chicken IgG (H&L) (RABBIT) Antibody 1:3,000 for 60 min at RT. Secondary antibody: Anti-Rabbit IgG (GOAT) Peroxidase Conjugated Antibody 1:40,000 in MB-070 for 30 min at RT. Predicted/Observed Size: 25 and 72 kDa for Chicken IgG, 25 kDa for F(c) and F(ab). Chicken F(c) migrates slightly higher.

**Anti-CHICKEN IgG (H&L) (Fluorescein Conjugated) Secondary Antibody - Background**

Anti-Chicken IgG/IgY Secondary Antibody is designed for immunofluorescence microscopy, fluorescence based plate assays (FLISA) and fluorescent western blotting. This product is also suitable for multiplex analysis, including multicolor imaging, utilizing various commercial platforms.