

Anti-Human IgG (H&L) Secondary Antibody
Mouse Polyclonal, Unconjugated
Catalog # ASR1599**Specification**

Anti-Human IgG (H&L) Secondary Antibody - Product Information

Description	Anti-HUMAN IgG (H&L) (MOUSE) Antibody
Host	Mouse
Conjugate	Unconjugated
Target Species	Human
Reactivity	Human
Clonality	Polyclonal
Application	,1,2,10,
Application Note	ELISA 1:5,000-1:50,000;Western Blot 1:500-1:5,000;Immunohistochemistry 1:1,000-1:5,000
Physical State	Liquid (sterile filtered)
Host Isotype	IgG
Target Isotype	IgG (H&L)
Buffer	0.02 M Potassium Phosphate, 0.15 M Sodium Chloride, pH 7.2
Immunogen	Human IgG whole molecule
Stabilizer	None
Preservative	0.01% (w/v) Sodium Azide

Anti-Human IgG (H&L) Secondary Antibody - Additional Information**Shipping Condition**

Wet Ice

Purity

This product was prepared from monospecific polyclonal ascites by immunoaffinity chromatography using Human IgG coupled to agarose beads followed by solid phase adsorption(s) to remove any unwanted reactivities. Assay by immunoelectrophoresis resulted in a single precipitin arc against anti-Mouse Serum, Human IgG and Human Serum.

Storage Condition

Store vial at 4° C prior to opening. This product is stable for several weeks at 4° C as an undiluted liquid. Dilute only prior to immediate use. For extended storage aliquot contents and freeze at -20° C or below. Avoid cycles of freezing and thawing.

Precautions Note

This product is for research use only and is not intended for therapeutic or diagnostic applications.

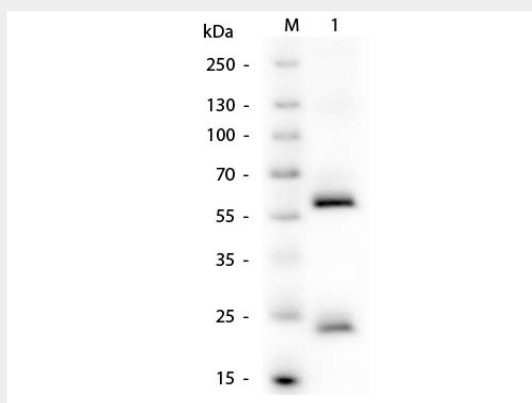
Anti-Human IgG (H&L) Secondary Antibody - Protein Information

Anti-Human IgG (H&L) Secondary Antibody - Protocols

Provided below are standard protocols that you may find useful for product applications.

- [Western Blot](#)
- [Blocking Peptides](#)
- [Dot Blot](#)
- [Immunohistochemistry](#)
- [Immunofluorescence](#)
- [Immunoprecipitation](#)
- [Flow Cytometry](#)
- [Cell Culture](#)

Anti-Human IgG (H&L) Secondary Antibody - Images



Western Blot of Human IgG Antibody. M: 3 μ L Opal Prestained Ladder (MB-210-0500). Lane 1: Human IgG. Load: 50 ng per lane. Primary antibody: Human IgG Antibody at 1:1,000 overnight at 4°C. Secondary antibody: Peroxidase conjugated mouse secondary antibody at 1:40,000 for 30 minutes at RT. Block: MB-070 for 30 minutes at RT. Predicted/Observed size: 55 kDa, 25 kDa for Human IgG.