

Anti-Human IgG (H&L) (Biotin Conjugated) Secondary Antibody
Rabbit Polyclonal, Biotin
Catalog # ASR1606**Specification****Anti-Human IgG (H&L) (Biotin Conjugated) Secondary Antibody - Product Information**

Description	Anti-HUMAN IgG (H&L) (RABBIT) Antibody
Host	Biotin Conjugated
Conjugate	Rabbit
Target Species	Biotin
Clonality	Human
Application	Polyclonal
Application Note	,1,10,15, ELISA 1:20,000-1:100,000;Western Blot 1:2,000-1:10,000;Immunochemistry 1:1,000-1:5,000
Physical State	Lyophilized
Host Isotype	IgG
Target Isotype	IgG (H&L)
Buffer	0.02 M Potassium Phosphate, 0.15 M Sodium Chloride, pH 7.2
Immunogen	Human IgG whole molecule
Reconstitution Volume	1.0 mL
Reconstitution Buffer	Restore with deionized water (or equivalent)
Stabilizer	10 mg/mL Bovine Serum Albumin (BSA) - Immunoglobulin and Protease free
Preservative	0.01% (w/v) Sodium Azide

Anti-Human IgG (H&L) (Biotin Conjugated) Secondary Antibody - Additional Information**Shipping Condition**

Ambient

Purity

This product was prepared from monospecific antiserum by immunoaffinity chromatography using Human IgG coupled to agarose beads followed by solid phase adsorption(s) to remove any unwanted reactivities. Assay by immunoelectrophoresis resulted in a single precipitin arc against anti-biotin, anti-Rabbit Serum, Human IgG and Human Serum.

Storage Condition

Store vial at 4° C prior to restoration. For extended storage aliquot contents and freeze at -20° C or below. Avoid cycles of freezing and thawing. Centrifuge product if not completely clear after standing at room temperature. This product is stable for several weeks at 4° C as an undiluted liquid. Dilute only prior to immediate use.

Precautions Note

This product is for research use only and is not intended for therapeutic or diagnostic applications.

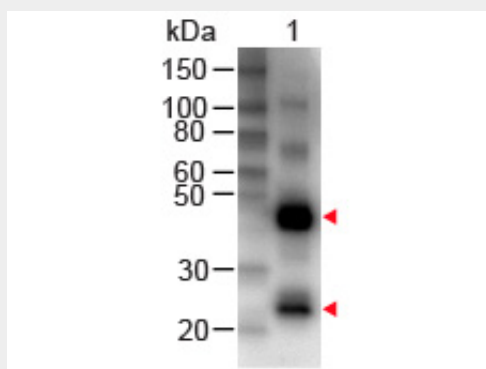
Anti-Human IgG (H&L) (Biotin Conjugated) Secondary Antibody - Protein Information

Anti-Human IgG (H&L) (Biotin Conjugated) Secondary Antibody - Protocols

Provided below are standard protocols that you may find useful for product applications.

- [Western Blot](#)
- [Blocking Peptides](#)
- [Dot Blot](#)
- [Immunohistochemistry](#)
- [Immunofluorescence](#)
- [Immunoprecipitation](#)
- [Flow Cytometry](#)
- [Cell Culture](#)

Anti-Human IgG (H&L) (Biotin Conjugated) Secondary Antibody - Images



Western Blot of Rabbit anti-Human IgG (H&L) Antibody Biotin Conjugated Lane 1: Human IgG Load: 50 ng per lane Primary antibody: Human IgG (H&L) Antibody Biotin Conjugated at 1:1000 for 60 min RT Secondary antibody: HRP Conjugated Streptavidin at 1:40,000 for 30 min at RT Block: MB-070 for 30 min at RT