

Anti-RABBIT IgG (H&L) Pre-adsorbed Secondary Antibody
Mouse Polyclonal, Unconjugated
Catalog # ASR1637**Specification****Anti-RABBIT IgG (H&L) Pre-adsorbed Secondary Antibody - Product Information**

Description	Anti-RABBIT IgG (H&L) (MOUSE) Antibody (Min X Hu, Gt, Ms Serum Proteins)
Host	Mouse
Conjugate	Unconjugated
Target Species	Rabbit
Reactivity	Rabbit
Clonality	Polyclonal
Application	,1,10,15,
Application Note	ELISA 1:65,000;Western Blot 1:3,000-1:30,000;Immunochemistry 1:1,000-1:5,000
Physical State	Liquid (sterile filtered)
Host Isotype	IgG
Target Isotype	IgG (H&L)
Buffer	0.02 M Potassium Phosphate, 0.15 M Sodium Chloride, pH 7.2
Immunogen	Anti-Rabbit IgG (H&L) was produced by repeated immunization with rabbit whole IgG molecule in mouse.
Preservative	0.01% (w/v) Sodium Azide

Anti-RABBIT IgG (H&L) Pre-adsorbed Secondary Antibody - Additional Information**Shipping Condition**

Wet Ice

Purity

This product was prepared from monospecific polyclonal ascites by immunoaffinity chromatography using Rabbit IgG coupled to agarose beads followed by solid phase adsorption(s) to remove any unwanted reactivities. Assay by immunoelectrophoresis resulted in a single precipitin arc against anti-Mouse Serum, Rabbit IgG and Rabbit Serum. No reaction was observed against Goat, Human or Mouse Serum Proteins.

Storage Condition

Store vial at 4° C prior to opening. This product is stable for several weeks at 4° C as an undiluted liquid. Dilute only prior to immediate use. For extended storage aliquot contents and freeze at -20° C or below. Avoid cycles of freezing and thawing.

Precautions Note

This product is for research use only and is not intended for therapeutic or diagnostic applications.

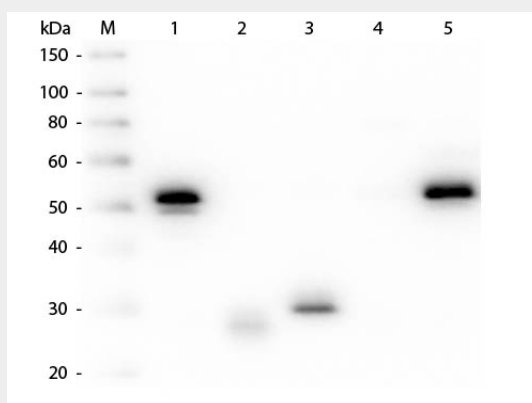
Anti-RABBIT IgG (H&L) Pre-adsorbed Secondary Antibody - Protein Information

Anti-RABBIT IgG (H&L) Pre-adsorbed Secondary Antibody - Protocols

Provided below are standard protocols that you may find useful for product applications.

- [Western Blot](#)
- [Blocking Peptides](#)
- [Dot Blot](#)
- [Immunohistochemistry](#)
- [Immunofluorescence](#)
- [Immunoprecipitation](#)
- [Flow Cytometry](#)
- [Cell Culture](#)

Anti-RABBIT IgG (H&L) Pre-adsorbed Secondary Antibody - Images



Western Blot of Anti-Rabbit IgG (H&L) (MOUSE) Antibody (Min X Hu, Gt, Ms Serum Proteins) . Lane M: 3 μ l Molecular Ladder. Lane 1: Rabbit IgG whole molecule . Lane 2: Rabbit IgG F(ab) Fragment . Lane 3: Rabbit IgG F(c) Fragment . Lane 4: Rabbit IgM Whole Molecule . Lane 5: Normal Rabbit Serum . All samples were reduced. Load: 50 ng per lane. Block: MB-070 for 30 min at RT. Primary Antibody: Anti-Rabbit IgG (H&L) (MOUSE) Antibody (Min X Hu, Gt, Ms Serum Proteins) 1:1,000 for 60 min at RT. Secondary antibody: Anti-Mouse IgG (RABBIT) Peroxidase Conjugated Antibody 1:40,000 in MB-070 for 30 min at RT. Predicted/Observed Size: 25 and 50 kDa for Rabbit IgG and Serum, 25 kDa for F(c) and F(ab), 70 and 23 kDa for IgM. Rabbit F(c) migrates slightly higher.

Anti-RABBIT IgG (H&L) Pre-adsorbed Secondary Antibody - Background

Anti-Rabbit IgG antibody generated in mouse detects specifically rabbit IgG. This secondary antibody anti-Rabbit is ideal for investigators who routinely perform titration assays, western-blot, immunoprecipitation and more generally immunoassays.