

Anti-Rabbit IgG (H&L) (Texas Red™ Conjugated) Secondary Antibody
Donkey Polyclonal, Texas Red®
Catalog # ASR1645**Specification****Anti-Rabbit IgG (H&L) (Texas Red™ Conjugated) Secondary Antibody - Product Information**

Description	Anti-RABBIT IgG (H&L) (DONKEY) Antibody Texas Red™ Conjugated
Host	Donkey
Conjugate	Texas Red®
FP Value	3.03 moles Texas Red® per mole of IgG
Target Species	Rabbit
Clonality	Polyclonal
Application	,3,4,
Application Note	FLISA 1:10,000-1:50,000;IF Microscopy 1:1,000-1:5,000;FlowCytometry 1:500-1:2,500
Physical State	Lyophilized
Host Isotype	IgG
Target Isotype	IgG (H&L)
Buffer	0.02 M Potassium Phosphate, 0.15 M Sodium Chloride, pH 7.2
Immunogen	Rabbit IgG whole molecule
Reconstitution Volume	2.0 mL
Reconstitution Buffer	Restore with deionized water (or equivalent)
Stabilizer	10 mg/mL Bovine Serum Albumin (BSA) - Immunoglobulin and Protease free
Preservative	0.01% (w/v) Sodium Azide

Anti-Rabbit IgG (H&L) (Texas Red™ Conjugated) Secondary Antibody - Additional Information**Shipping Condition**

Ambient

Purity

This product was prepared from monospecific antiserum by immunoaffinity chromatography using Rabbit IgG coupled to agarose beads followed by solid phase adsorption(s) to remove any unwanted reactivities. Assay by immunoelectrophoresis resulted in a single precipitin arc against anti-Donkey Serum, Rabbit IgG, and Rabbit Serum.

Storage Condition

Store vial at 4° C prior to restoration. For extended storage aliquot contents and freeze at -20° C or below. Avoid cycles of freezing and thawing. Centrifuge product if not completely clear after standing at room temperature. This product is stable for several weeks at 4° C as an undiluted liquid. Dilute only prior to immediate use.

Precautions Note

This product is for research use only and is not intended for therapeutic or diagnostic applications.

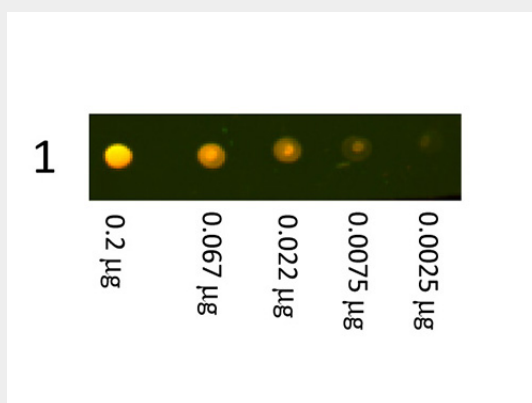
Anti-Rabbit IgG (H&L) (Texas Red™ Conjugated) Secondary Antibody - Protein Information

Anti-Rabbit IgG (H&L) (Texas Red™ Conjugated) Secondary Antibody - Protocols

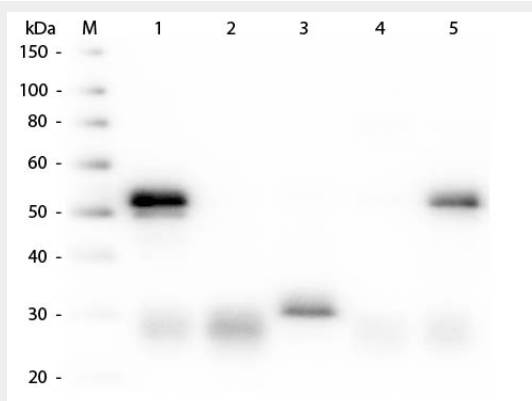
Provided below are standard protocols that you may find useful for product applications.

- [Western Blot](#)
- [Blocking Peptides](#)
- [Dot Blot](#)
- [Immunohistochemistry](#)
- [Immunofluorescence](#)
- [Immunoprecipitation](#)
- [Flow Cytometry](#)
- [Cell Culture](#)

Anti-Rabbit IgG (H&L) (Texas Red™ Conjugated) Secondary Antibody - Images



Dot Blot showing the detection of Rabbit IgG. A three-fold serial dilution of Rabbit IgG starting at 200ng was spotted onto 0.45 µm nitrocellulose. After blocking in 5% Blotto 1 Hour at 20°C, Anti-Rabbit IgG (H&L) (DONKEY) Antibody Texas Red Conjugated secondary antibody was used at 1:1000 in Blocking Buffer for Fluorescent Western Blotting and imaged using the Bio-Rad VersaDoc® 4000 MP.



Western Blot of Anti-Rabbit IgG (H&L) (DONKEY) Antibody Peroxidase Conjugated . Lane M: 3 μ l Molecular Ladder. Lane 1: Rabbit IgG whole molecule . Lane 2: Rabbit IgG F(ab) Fragment . Lane 3: Rabbit IgG F(c) Fragment . Lane 4: Rabbit IgM Whole Molecule . Lane 5: Normal Rabbit Serum . All samples were reduced. Load: 50 ng per lane. Block: MB-070 for 30 min at RT. Primary Antibody: Anti-Rabbit IgG (H&L) (DONKEY) Antibody Peroxidase Conjugated 1:5,000 for 60 min at RT. Secondary antibody: None. Predicted/Obsevered Size: 25 and 50 kDa for Rabbit IgG and Serum, 25 kDa for F(c) and F(ab), 70 and 23 kDa for IgM. Rabbit F(c) migrates slightly higher.

Anti-Rabbit IgG (H&L) (Texas Red™ Conjugated) Secondary Antibody - Background

This product is designed for immunofluorescence microscopy, fluorescence based plate assays (FLISA) and fluorescent western blotting. This product is also suitable for multiplex analysis, including multicolor imaging, utilizing various commercial platforms.