

**Anti-Rat IgG (H&L) Pre-Adsorbed Secondary Antibody**  
**Goat Polyclonal, Unconjugated**  
**Catalog # ASR1647****Specification****Anti-Rat IgG (H&L) Pre-Adsorbed Secondary Antibody - Product Information**

Description	<b>Anti-RAT IgG (H&amp;L) (GOAT) Antibody</b>
Host	<b>Goat</b>
Conjugate	<b>Unconjugated</b>
Target Species	<b>Rat</b>
Reactivity	<b>Rat</b>
Clonality	<b>Polyclonal</b>
Application	<b>,1,10,15,</b>
Application Note	<b>ELISA 1:10,000-1:40,000;Western Blot</b>
	<b>1:1,000-1:4,000;Immunochemistry</b>
	<b>1:500-1:2,000</b>
Physical State	<b>Liquid (sterile filtered)</b>
Host Isotype	<b>IgG</b>
Target Isotype	<b>IgG (H&amp;L)</b>
Buffer	<b>0.02 M Potassium Phosphate, 0.15 M</b>
	<b>Sodium Chloride, pH 7.2</b>
	<b>Rat IgG whole molecule</b>
Immunogen	<b>Rat</b>
Species of Origin	<b>None</b>
Stabilizer	<b>0.01% (w/v) Sodium Azide</b>
Preservative	

**Anti-Rat IgG (H&L) Pre-Adsorbed Secondary Antibody - Additional Information****Shipping Condition**

Wet Ice

**Purity**

Anti-RAT IgG (H&L) (GOAT) Antibody was prepared from monospecific antiserum by immunoaffinity chromatography using Rat IgG coupled to agarose beads followed by solid phase adsorption(s) to remove any unwanted reactivities. Assay by immunoelectrophoresis resulted in a single precipitin arc against anti-Goat Serum, Rat IgG and Rat Serum. No reaction was observed against Bovine, Chicken, Goat, Guinea Pig, Hamster, Horse, Human, Mouse, Rabbit and Sheep Serum Proteins.

**Storage Condition**

Store vial at 4° C prior to opening. This product is stable for several weeks at 4° C as an undiluted liquid. Dilute only prior to immediate use. For extended storage aliquot contents and freeze at -20° C or below. Avoid cycles of freezing and thawing.

**Precautions Note**

This product is for research use only and is not intended for therapeutic or diagnostic applications.

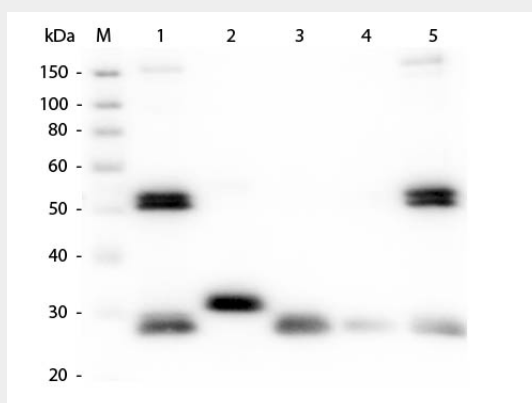
**Anti-Rat IgG (H&L) Pre-Adsorbed Secondary Antibody - Protein Information**

## Anti-Rat IgG (H&L) Pre-Adsorbed Secondary Antibody - Protocols

Provided below are standard protocols that you may find useful for product applications.

- [Western Blot](#)
- [Blocking Peptides](#)
- [Dot Blot](#)
- [Immunohistochemistry](#)
- [Immunofluorescence](#)
- [Immunoprecipitation](#)
- [Flow Cytometry](#)
- [Cell Culture](#)

## Anti-Rat IgG (H&L) Pre-Adsorbed Secondary Antibody - Images



Western Blot of Anti-Rat IgG (H&L) (GOAT) Antibody (Min X Bv Ch Gt GP Ham Hs Hu Ms Rb & Sh Serum Proteins) . Lane M: 3  $\mu$ l Molecular Ladder. Lane 1: Rat IgG whole molecule . Lane 2: Rat IgG F(c) Fragment . Lane 3: Rat IgG F(ab) Fragment . Lane 4: Rat IgM Whole Molecule . Lane 5: Rat Serum . All samples were reduced. Load: 50 ng per lane. Block: MB-070 for 30 min at RT. Primary Antibody: Anti-Rat IgG (H&L) (GOAT) Antibody (Min X Bv Ch Gt GP Ham Hs Hu Ms Rb & Sh Serum Proteins) 1:1,000 for 60 min at RT. Secondary Antibody: Anti-Goat IgG (DONKEY) Peroxidase Conjugated Antibody 1:40,000 in MB-070 for 30 min at RT. Predicted/Observed Size: 25 and 55 kDa for Rat IgG and Serum, 25 kDa for F(c) and F(ab), 78 and 25 kDa for IgM. Rat F(c) migrates slightly higher.

## Anti-Rat IgG (H&L) Pre-Adsorbed Secondary Antibody - Background

RAT IgG (H&L) (GOAT) Antibody was generated in goat detects specifically Rat IgG whole molecule. Anti-Rat IgG antibody is ideal for investigators involved in serum protein component research.