

Anti-Sheep IgG (H&L) (Texas Red™ Conjugated) Secondary Antibody
Donkey Polyclonal, Texas Red®
Catalog # ASR1671**Specification****Anti-Sheep IgG (H&L) (Texas Red™ Conjugated) Secondary Antibody - Product Information**

Description	Anti-SHEEP IgG (H&L) (DONKEY) Antibody Texas Red™ Conjugated
Host	Donkey
Conjugate	Texas Red®
FP Value	4.7 moles Texas Red® per mole of IgG
Target Species	Sheep
Clonality	Polyclonal
Application	,3,4,
Application Note	FLISA 1:10,000-1:50,000;IF Microscopy 1:1,000-1:5,000;FlowCytometry 1:500-1:2,500
Physical State	Lyophilized
Host Isotype	IgG
Target Isotype	IgG (H&L)
Buffer	0.02 M Potassium Phosphate, 0.15 M Sodium Chloride, pH 7.2
Immunogen	Sheep IgG whole molecule
Reconstitution Volume	1.0 mL
Reconstitution Buffer	Restore with deionized water (or equivalent)
Stabilizer	10 mg/mL Bovine Serum Albumin (BSA) - Immunoglobulin and Protease free
Preservative	0.01% (w/v) Sodium Azide

Anti-Sheep IgG (H&L) (Texas Red™ Conjugated) Secondary Antibody - Additional Information**Shipping Condition**

Ambient

Purity

Sheep IgG (H&L) Antibody Texas Red™ Conjugated was prepared from monospecific antiserum by immunoaffinity chromatography using Sheep IgG coupled to agarose beads followed by solid phase adsorption(s) to remove any unwanted reactivities. Assay by immunoelectrophoresis resulted in a single precipitin arc against anti-Donkey Serum, Sheep IgG and Sheep Serum.

Storage Condition

Store vial at 4° C prior to restoration. For extended storage aliquot contents and freeze at -20° C or below. Avoid cycles of freezing and thawing. Centrifuge product if not completely clear after standing at room temperature. This product is stable for several weeks at 4° C as an undiluted liquid. Dilute only prior to immediate use.

Precautions Note

This product is for research use only and is not intended for therapeutic or diagnostic applications.

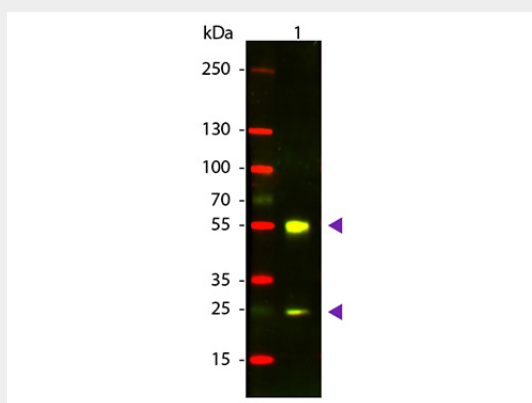
Anti-Sheep IgG (H&L) (Texas Red™ Conjugated) Secondary Antibody - Protein Information

Anti-Sheep IgG (H&L) (Texas Red™ Conjugated) Secondary Antibody - Protocols

Provided below are standard protocols that you may find useful for product applications.

- [Western Blot](#)
- [Blocking Peptides](#)
- [Dot Blot](#)
- [Immunohistochemistry](#)
- [Immunofluorescence](#)
- [Immunoprecipitation](#)
- [Flow Cytometry](#)
- [Cell Culture](#)

Anti-Sheep IgG (H&L) (Texas Red™ Conjugated) Secondary Antibody - Images



Western Blot of Donkey anti-Sheep IgG Texas Red Conjugated Antibody. Lane 1: Sheep IgG. Lane 2: None. Load: 50 ng per lane. Primary antibody: None. Secondary antibody: Texas Red donkey secondary antibody at 1:1,000 for 60 min at RT. Block: MB-070 for 30 min at RT. Predicted/Observed size: 28 & 55 kDa, 28 & 55 kDa for Sheep IgG. Other band(s): None.

Anti-Sheep IgG (H&L) (Texas Red™ Conjugated) Secondary Antibody - Background

Sheep IgG (H&L) Antibody Texas Red™ Conjugated antibodies are designed for immunofluorescence microscopy, fluorescence based plate assays (FLISA) and fluorescent western blotting. This product is also suitable for multiplex analysis, including multicolor imaging, utilizing various commercial platforms.