

**Anti-Swine IgG (H&L) (Biotin Conjugated) Secondary Antibody**  
**Rabbit Polyclonal, Biotin**  
**Catalog # ASR1837****Specification****Anti-Swine IgG (H&L) (Biotin Conjugated) Secondary Antibody - Product Information**

Description	<b>Anti-SWINE IgG (H&amp;L) (RABBIT) Antibody</b>
Host	<b>Biotin Conjugated</b>
Conjugate	<b>Rabbit</b>
Target Species	<b>Biotin</b>
Clonality	<b>Swine</b>
Application	<b>Polyclonal</b>
Application Note	<b>,1,10,15, ELISA 1:20,000-1:100,000;Western Blot 1:2,000-1:10,000;Immunochemistry 1:1,000-1:5,000</b>
Physical State	<b>Lyophilized</b>
Host Isotype	<b>IgG</b>
Target Isotype	<b>IgG (H&amp;L)</b>
Buffer	<b>0.02 M Potassium Phosphate, 0.15 M Sodium Chloride, pH 7.2</b>
Immunogen	<b>Swine IgG whole molecule</b>
Reconstitution Volume	<b>1.0 mL</b>
Reconstitution Buffer	<b>Restore with deionized water (or equivalent)</b>
Stabilizer	<b>10 mg/mL Bovine Serum Albumin (BSA) - Immunoglobulin and Protease free</b>
Preservative	<b>0.01% (w/v) Sodium Azide</b>

**Anti-Swine IgG (H&L) (Biotin Conjugated) Secondary Antibody - Additional Information****Shipping Condition**

Ambient

**Purity**

This product was prepared from monospecific antiserum by immunoaffinity chromatography using Swine IgG coupled to agarose beads followed by solid phase adsorption(s) to remove any unwanted reactivities. Assay by immunoelectrophoresis resulted in a single precipitin arc against anti-biotin, anti-Rabbit Serum, Swine IgG and Swine Serum.

**Storage Condition**

Store vial at 4° C prior to restoration. For extended storage aliquot contents and freeze at -20° C or below. Avoid cycles of freezing and thawing. Centrifuge product if not completely clear after standing at room temperature. This product is stable for several weeks at 4° C as an undiluted liquid. Dilute only prior to immediate use.

**Precautions Note**

This product is for research use only and is not intended for therapeutic or diagnostic applications.

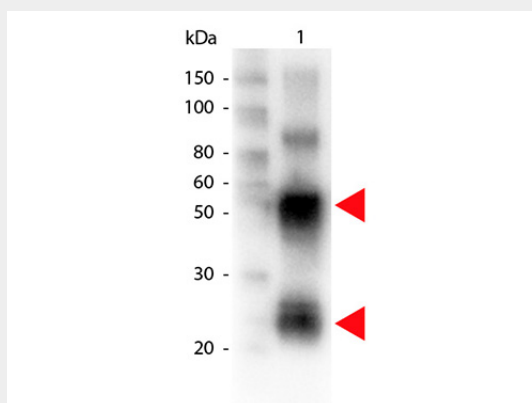
## Anti-Swine IgG (H&L) (Biotin Conjugated) Secondary Antibody - Protein Information

## Anti-Swine IgG (H&L) (Biotin Conjugated) Secondary Antibody - Protocols

Provided below are standard protocols that you may find useful for product applications.

- [Western Blot](#)
- [Blocking Peptides](#)
- [Dot Blot](#)
- [Immunohistochemistry](#)
- [Immunofluorescence](#)
- [Immunoprecipitation](#)
- [Flow Cytometry](#)
- [Cell Culture](#)

## Anti-Swine IgG (H&L) (Biotin Conjugated) Secondary Antibody - Images



Western Blot of Biotin conjugated Rabbit anti-Swine antibody. Lane 1: Swine IgG. Lane 2: none. Load: 100 ng per lane. Primary antibody: Biotin conjugated swine antibody at 1:1,000 for overnight at 4°C. Secondary antibody: HRP Streptavidin secondary antibody at 1:40,000 for 30 min at RT. Block: MB-070 for 30 min at RT. Predicted/Observed size: 55 and 28 kDa for Swine IgG. Other band(s): none.