

Anti-Goat IgG (H&L) (Fluorescein Conjugated) Secondary Antibody
Chicken Polyclonal, Fluorescein (FITC)
Catalog # ASR1893**Specification****Anti-Goat IgG (H&L) (Fluorescein Conjugated) Secondary Antibody - Product Information**

Description	Anti-GOAT IgG (H&L) (CHICKEN) Antibody
Host	Fluorescein Conjugated
Conjugate	Chicken
FP Value	Fluorescein (FITC)
	2.9 moles Fluorescein (FITC) per mole of
	IgG
Target Species	Goat
Clonality	Polyclonal
Application	,3,4,
Application Note	FLISA 1:10,000-1:50,000;IF Microscopy
	1:1,000-1:5,000;FlowCytometry
	1:500-1:2,500
Physical State	Lyophilized
Host Isotype	IgG
Target Isotype	IgG (H&L)
Buffer	0.02 M Potassium Phosphate, 0.15 M
	Sodium Chloride, pH 7.2
Immunogen	Goat IgG whole molecule
Reconstitution Volume	1.0 mL
Reconstitution Buffer	Restore with deionized water (or
	equivalent)
Stabilizer	10 mg/mL Bovine Serum Albumin (BSA) -
	Immunoglobulin and Protease free
Preservative	0.01% (w/v) Sodium Azide

Anti-Goat IgG (H&L) (Fluorescein Conjugated) Secondary Antibody - Additional Information**Shipping Condition**

Ambient

Purity

This product was prepared from monospecific antiserum by immunoaffinity chromatography using Goat IgG coupled to agarose beads followed by solid phase adsorption(s) to remove any unwanted reactivities. Assay by immunoelectrophoresis resulted in a single precipitin arc against anti-Fluorescein, anti-Chicken Serum, Goat IgG and Goat Serum.

Storage Condition

Store vial at 4° C prior to restoration. For extended storage aliquot contents and freeze at -20° C or below. Avoid cycles of freezing and thawing. Centrifuge product if not completely clear after standing at room temperature. This product is stable for several weeks at 4° C as an undiluted liquid. Dilute only prior to immediate use.

Precautions Note

This product is for research use only and is not intended for therapeutic or diagnostic applications.

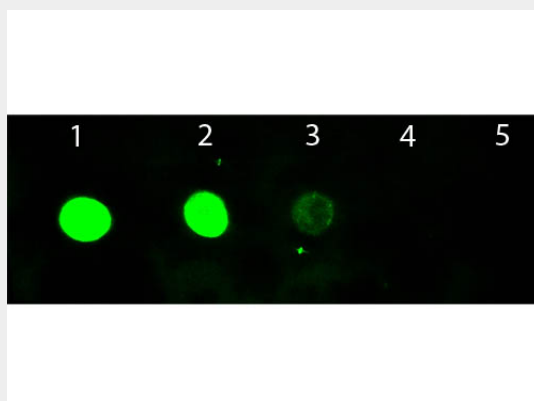
Anti-Goat IgG (H&L) (Fluorescein Conjugated) Secondary Antibody - Protein Information

Anti-Goat IgG (H&L) (Fluorescein Conjugated) Secondary Antibody - Protocols

Provided below are standard protocols that you may find useful for product applications.

- [Western Blot](#)
- [Blocking Peptides](#)
- [Dot Blot](#)
- [Immunohistochemistry](#)
- [Immunofluorescence](#)
- [Immunoprecipitation](#)
- [Flow Cytometry](#)
- [Cell Culture](#)

Anti-Goat IgG (H&L) (Fluorescein Conjugated) Secondary Antibody - Images



Dot Blot of Chicken anti-Goat IgG Antibody Fluorescein Conjugated. Antigen: Goat IgG. Load: Lane 1 - 100 ng Lane 2 - 33.3 ng Lane 3 - 11.1 ng Lane 4 - 3.70 ng Lane 5 - 1.23 ng. Primary antibody: n/a. Secondary antibody: Chicken anti-Goat IgG Antibody Fluorescein Conjugated at 1:1,000 for 60 min at RT. Block: MB-070 for 1 HR at RT.

Anti-Goat IgG (H&L) (Fluorescein Conjugated) Secondary Antibody - Background

This product is designed for immunofluorescence microscopy, fluorescence based plate assays (FLISA) and fluorescent western blotting. This product is also suitable for multiplex analysis, including multicolor imaging, utilizing various commercial platforms.