

**Anti-Human IgG F(c) (Rhodamine Conjugated) Pre-Adsorbed Secondary Antibody**  
**Goat Polyclonal, Rhodamine (TRITC)**  
**Catalog # ASR1915****Specification****Anti-Human IgG F(c) (Rhodamine Conjugated) Pre-Adsorbed Secondary Antibody - Product Information**

Description	<b>Anti-HUMAN IgG F(c) (GOAT) Antibody</b> <b>Rhodamine Conjugated Min X MOUSE</b> <b>Serum Proteins</b>
Host	<b>Goat</b>
Conjugate	<b>Rhodamine (TRITC)</b>
FP Value	<b>2.9 moles Rhodamine (TRITC) per mole of IgG</b>
Target Species	<b>Human</b>
Clonality	<b>Polyclonal</b>
Application	<b>,3,4,</b>
Application Note	<b>FLISA 1:10,000-1:50,000;IF Microscopy 1:1,000-1:5,000;FlowCytometry 1:500-1:2,500</b>
Physical State	<b>Lyophilized</b>
Host Isotype	<b>IgG</b>
Target Isotype	<b>IgG F(c)</b>
Buffer	<b>0.02 M Potassium Phosphate, 0.15 M Sodium Chloride, pH 7.2</b>
Immunogen	<b>Human IgG F(c) fragment</b>
Reconstitution Volume	<b>1.0 mL</b>
Reconstitution Buffer	<b>Restore with deionized water (or equivalent)</b>
Stabilizer	<b>10 mg/mL Bovine Serum Albumin (BSA) - Immunoglobulin and Protease free</b>
Preservative	<b>0.01% (w/v) Sodium Azide</b>

**Anti-Human IgG F(c) (Rhodamine Conjugated) Pre-Adsorbed Secondary Antibody - Additional Information****Shipping Condition**

Ambient

**Purity**

This product was prepared from monospecific antiserum by immunoaffinity chromatography using Human IgG coupled to agarose beads followed by solid phase adsorption(s) to remove any unwanted reactivities. Assay by immunoelectrophoresis resulted in a single precipitin arc against anti-Goat Serum, Human IgG, Human IgG F(c) and Human Serum. No reaction was observed against Human IgG F(ab')<sub>2</sub> or Mouse Serum Proteins. Specificity was confirmed by ELISA minimal cross reactivity against Mouse IgG.

**Storage Condition**

Store vial at 4° C prior to restoration. For extended storage aliquot contents and freeze at -20° C or below. Avoid cycles of freezing and thawing. Centrifuge product if not completely clear after

standing at room temperature. This product is stable for several weeks at 4° C as an undiluted liquid. Dilute only prior to immediate use.

#### **Precautions Note**

This product is for research use only and is not intended for therapeutic or diagnostic applications.

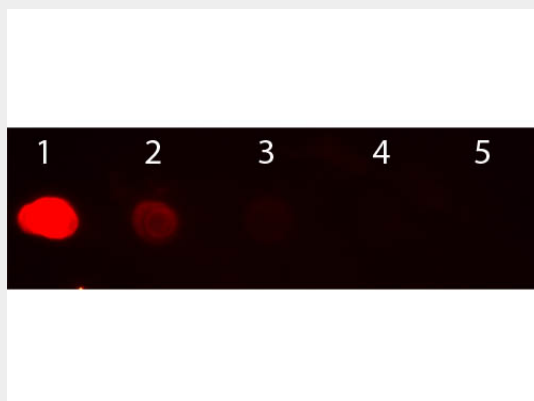
#### **Anti-Human IgG F(c) (Rhodamine Conjugated) Pre-Adsorbed Secondary Antibody - Protein Information**

#### **Anti-Human IgG F(c) (Rhodamine Conjugated) Pre-Adsorbed Secondary Antibody - Protocols**

Provided below are standard protocols that you may find useful for product applications.

- [Western Blot](#)
- [Blocking Peptides](#)
- [Dot Blot](#)
- [Immunohistochemistry](#)
- [Immunofluorescence](#)
- [Immunoprecipitation](#)
- [Flow Cytometry](#)
- [Cell Culture](#)

#### **Anti-Human IgG F(c) (Rhodamine Conjugated) Pre-Adsorbed Secondary Antibody - Images**



Dot Blot of Goat anti-Human IgG Fc Antibody Rhodamine Conjugated. Antigen: Human IgG. Load: Lane 1 - 100 ng Lane 2 - 33.3 ng Lane 3 - 11.1 ng Lane 4 - 3.70 ng Lane 5 - 1.23 ng. Primary antibody: n/a. Secondary antibody: Goat anti-Human IgG Fc Antibody Rhodamine Conjugated at 1:1,000 for 60 min at RT. Block: MB-070 for 1 HR at RT.

#### **Anti-Human IgG F(c) (Rhodamine Conjugated) Pre-Adsorbed Secondary Antibody - Background**

This product is designed for immunofluorescence microscopy, fluorescence based plate assays (FLISA) and fluorescent western blotting. This product is also suitable for multiplex analysis, including multicolor imaging, utilizing various commercial platforms.