

Anti-Monkey IgA (alpha chain) Secondary Antibody
Goat Polyclonal, Unconjugated
Catalog # ASR2002**Specification**

Anti-Monkey IgA (alpha chain) Secondary Antibody - Product Information

Description	Anti-MONKEY IgA (alpha chain) (GOAT) Antibody
Host	Goat
Conjugate	Unconjugated
Target Species	Monkey
Clonality	Polyclonal
Physical State	Liquid (sterile filtered)
Host Isotype	IgG
Target Isotype	IgA
Buffer	0.125 M Sodium Borate, 0.075 M Sodium Chloride, 0.005 M EDTA, pH 8.0
Immunogen	Anti-Monkey IgA (alpha chain) was produced by repeated immunization with monkey IgA alpha heavy chain in goat.
Preservative	0.01% (w/v) Sodium Azide

Anti-Monkey IgA (alpha chain) Secondary Antibody - Additional Information**Shipping Condition**

Wet Ice

Purity

This product was prepared from monospecific antiserum by immunoaffinity chromatography using Monkey IgA coupled to agarose beads followed by solid phase adsorption(s) to remove any unwanted reactivities. Assay by immunoelectrophoresis resulted in a single precipitin arc against anti-Goat Serum, Monkey IgA and Monkey Serum. No reaction was observed against Monkey IgG or Monkey IgM. Specificity was confirmed by ELISA at less than 1% cross reactivity against other monkey heavy or light chain isotypes.

Storage Condition

Store vial at 4° C prior to opening. This product is stable for several weeks at 4° C as an undiluted liquid. Dilute only prior to immediate use. For extended storage aliquot contents and freeze at -20° C or below. Avoid cycles of freezing and thawing.

Precautions Note

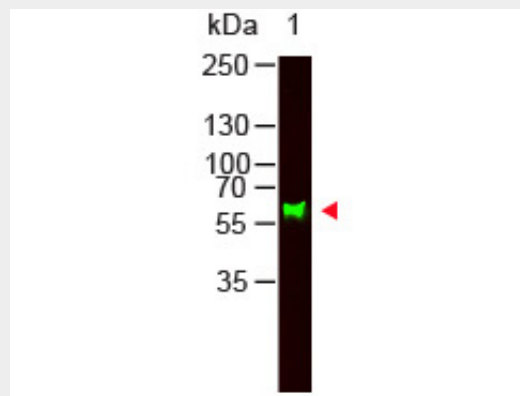
This product is for research use only and is not intended for therapeutic or diagnostic applications.

Anti-Monkey IgA (alpha chain) Secondary Antibody - Protein Information**Anti-Monkey IgA (alpha chain) Secondary Antibody - Protocols**

Provided below are standard protocols that you may find useful for product applications.

- [Western Blot](#)
- [Blocking Peptides](#)
- [Dot Blot](#)
- [Immunohistochemistry](#)
- [Immunofluorescence](#)
- [Immunoprecipitation](#)
- [Flow Cytometry](#)
- [Cell Culture](#)

Anti-Monkey IgA (alpha chain) Secondary Antibody - Images



Western Blot of Goat anti-Monkey IgA (alpha chain) antibody. Lane 1: Human IgA. Lane 2: None. Load: 100 ng per lane. Primary antibody: Monkey IgA (alpha chain) antibody at 1:1000 for overnight at 4°C. Secondary antibody: DyLight™ 800 goat secondary antibody at 1:20,000 for 30 min at RT. Block: MB-070 30 min at RT. Predicted/Observed size: 60 kDa, 60 kDa for Monkey IgA. Other Band(s): None.

Product	Gt-a-Monkey IgG	Gt-a-Monkey IgA	Gt-a-Monkey IgM
Rhesus Serum	+	+	+
Baboon Serum	+	+	+
Cynomolgus Serum	+	+	+
Rhesus IgG	+		
Human IgA		+	
Human IgM			+

This table displays additional reactivity among various species of serum and immunoglobulin. A (+) indicates antibody reactivity to the corresponding target.

Anti-Monkey IgA (alpha chain) Secondary Antibody - Background

Anti-Monkey IgA (alpha chain) antibody generated in goat detects specifically monkey IgA (alpha chain). This secondary antibody anti-Monkey is ideal for investigators who routinely perform ELISA, Sandwich ELISA, titration assays, western-blot, immunoprecipitation and more generally immunoassays.